



# *Design Ideas*

*For Your Outdoor Living Spaces*

*Allan Block  
Retaining Walls  
& Patio Walls  
Ideas Catalog*



[allanblock.com](http://allanblock.com)

# *Retaining and Patio Walls*



*The Allan Block products are inspired by nature to help create beautiful outdoor spaces in the world we live in.*



*Allan Block has many products available to help you transform your outdoor living area to a backyard destination. We hope our ideas will inspire you to create your own masterpiece to enjoy for years with family and friends.*

- 2-3 Outdoor Rooms*
- 4-5 Outdoor Entertaining*
- 6-7 Sloping Yards*
- 8-9 Entryways*
- 10-11 Patios*
- 12-13 Stairways*
- 14-15 Backyard Spaces*
- 16-17 Lighting*
- 18-19 Design & Estimating*
- 20-23 Installation*
- 24-25 Product Information*

*We pride ourselves on the training we provide to our Allan Block network of professionals so you can be confident in your choice.*





*Dress up your backyard space to entertain family and friends while enjoying the great outdoors.*

# Outdoor Rooms



*Create cozy spaces for fireside chats or open areas for large get-togethers. Build memories that last a lifetime.*



# Outdoor Entertaining



*Enjoy your surroundings by transforming your outdoor space into a gathering spot for family and friends.*



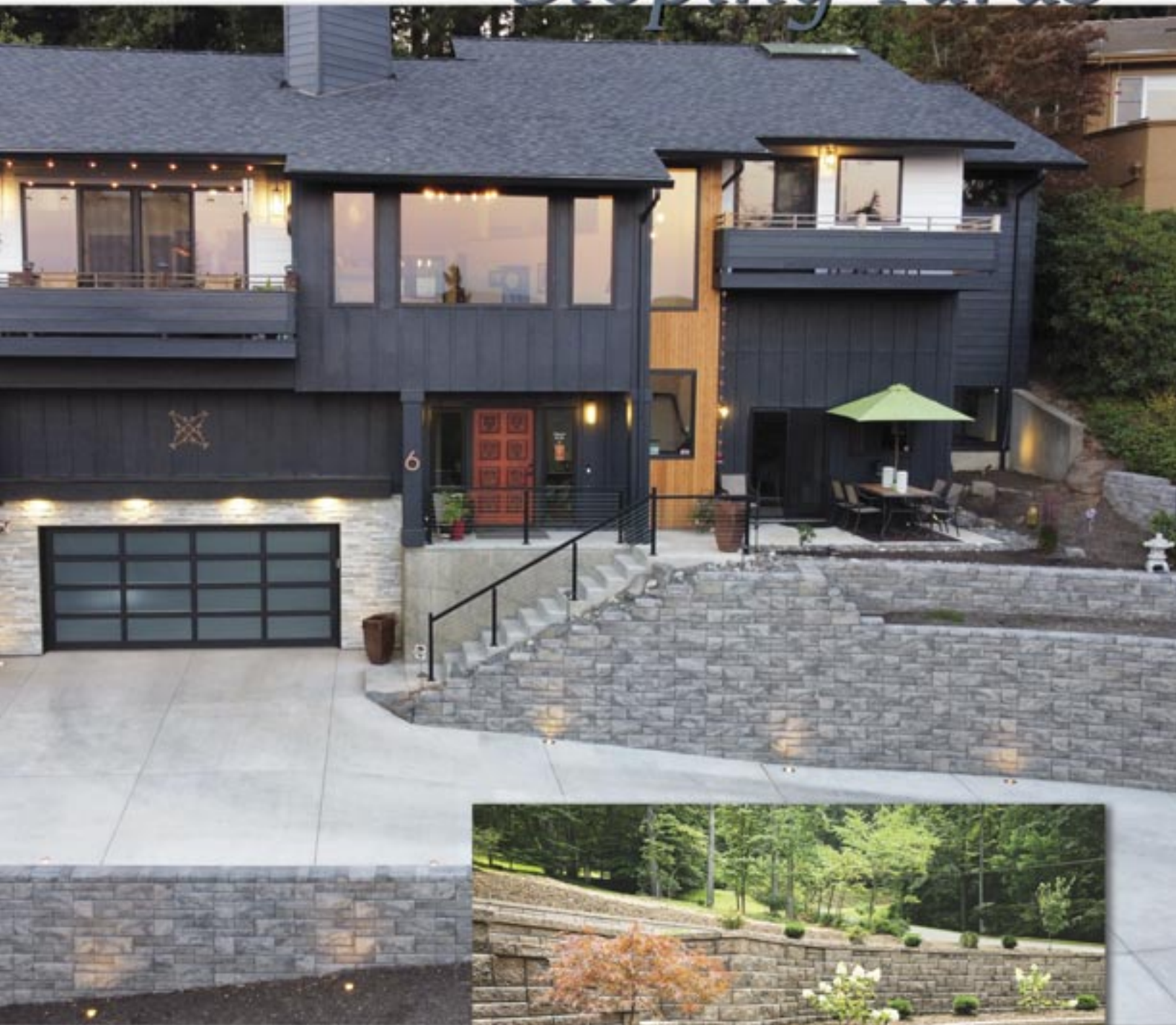
*Move the fun outdoors for a relaxed and casual atmosphere with built-in seating, firepits, kitchens and more.*



*Claim more space by turning sloping yards into something extraordinary with beautiful gardens and planted areas.*



# Sloping Yards



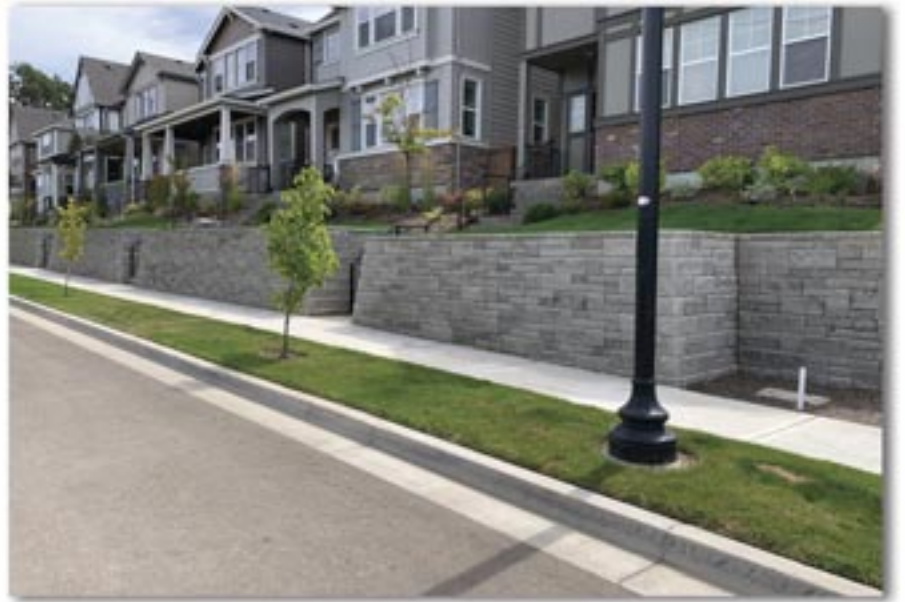
*Use grade changes to your advantage by adding multiple walls or stairways to elevate your architectural style with a warm inviting outdoor space.*



# Entryways



*Create a bold statement or charm your guests with visual elegance.*



*Stunning stairways or graceful transitions will welcome you home. Among the AB Collections, we have the products to accent your architectural style.*



*With our design flexibility you can build strong, durable patios in any size and shape with very little maintenance.*

# Patios



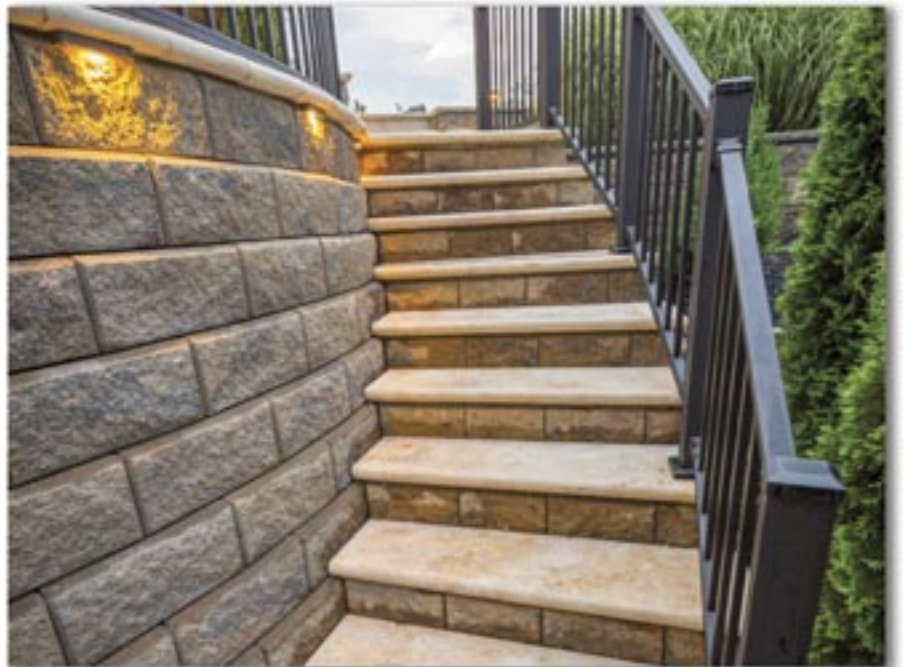
*Create more usable space or multi-level patios for a quiet getaway or to entertain family and friends.*



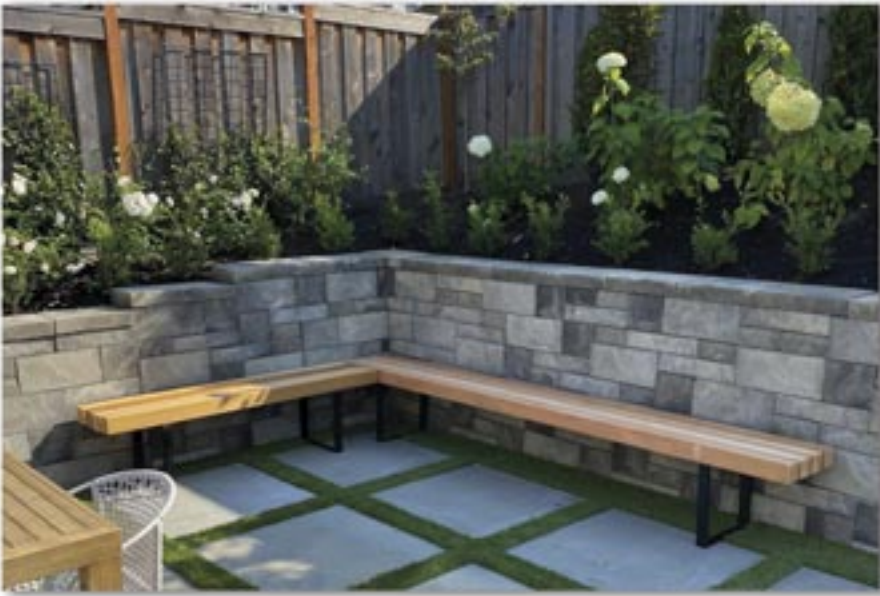
# Stairways



*Enhance your outdoor spaces with stylish and functional stairways to easily connect upper and lower elevations in elegant transitions.*



*Stairways add a visual element that can flow through the landscape with curves or follow along the side of a slope. The design possibilities are endless.*



*Upgrade your backyard space and extend your home outdoors, adding beauty and function.*



# Backyard Spaces



*Design a comfortable outdoor living space with a purpose. Envision a relaxed kitchen or bar space, a private oasis or a backyard entertaining area.*



# Lighting



*Accentuate moonlit evenings with lighting and create enjoyable outdoor spaces for family and friends.*



*Highlight the beauty of your backyard or mark the boundaries with warm, subtle lighting.*

# Design and Estimating

Estimating made easy with our great tools.

## AB Retaining Wall App

Design and estimate your retaining wall projects with material outputs given for all retaining wall collections. A detailed package is generated and emailed instantly.



## AB Courtyard Patio Wall App

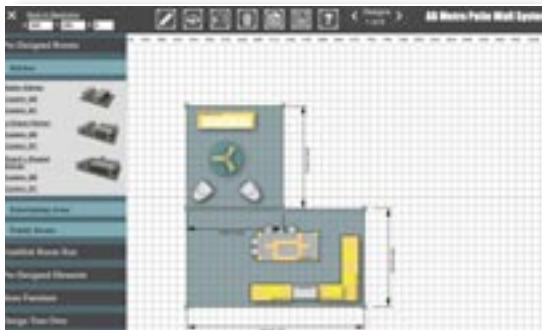
Design and estimate two-sided patio walls using panels, posts, corners and more or choose from pre-designed options. A detailed package is generated and emailed instantly.



Apps are available for tablet, mobile devices and Mac/PC computers.

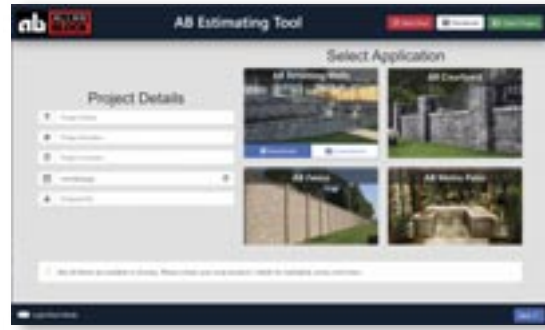
## AB Metro Patio Wall App

Design room layouts just as easy as installing the block with the Magic 1-2-3 Pattern. Use and alter pre-designed layouts or create your room size, then drag and drop from our large library of options from counters, tables, bars, seating and more. Then with a click of a button you will receive full material details and a 3D file of your project.



## Estimating Tool

Estimating your project for retaining walls, patio walls and/or fences all in one tool. Choose the product, enter the project's details and instantly receive a detailed list that includes quantities for the block, rock, grid and more.



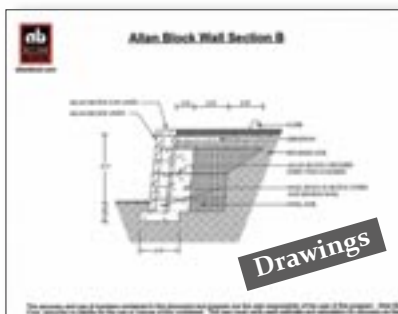
Visit [allanblock.com](http://allanblock.com) for complete installation details.

Use the Allan Block Apps or the AB Estimating Tool to create a detailed material estimate on your next project. By simply entering in the project details, you can generate specific drawings and product estimates from all the available Allan Block products.

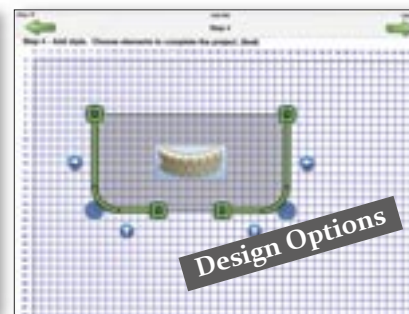
Download them today to check out the great design and estimating tools available to you for FREE.



Estimate your project today!



Drawings



Design Options



Material Lists



Block Quantities

## Visualize the Project with 3D Images from our Apps

The Allan Block Apps can create a file with the details of your project that can be opened in the 3D modeling program SketchUp. Then download additional images, like plants, furniture and more, from the AB 3D Library or SketchUp's Warehouse to create and design the look you want to achieve for your outdoor space.



From App to 3D design in seconds.

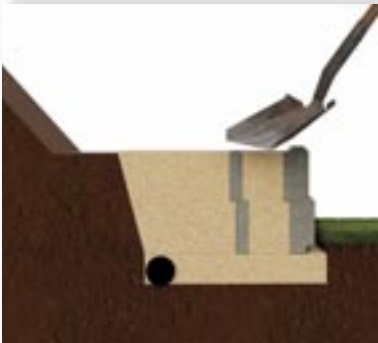
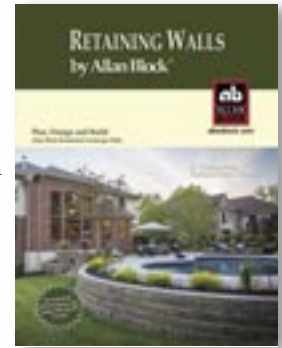


Visit [allanblock.com](http://allanblock.com) for complete installation details.

# Installation

## Build an Allan Block® Retaining Wall

### Gravity Walls



1. Mark the location of the retaining wall and dig a trench a minimum of 24 in. wide (600 mm) and 6 in. deep (150 mm) plus an additional 1 inch (25 mm) for each 1 ft (300 mm) of wall height for gravity walls. If reinforcement will be needed, additional excavation will need to be completed to accommodate the length of the grid, see [allanblock.com](http://allanblock.com) for complete details. Excavated materials that can not be used as backfill material will need to be discarded. Compact the trench thoroughly with a hand tamper or plate compactor. Install a drain pipe at the back of the trench for walls with poor drainage, over 4 ft. (1.2 m) tall or any reinforced walls. Make sure the drain pipe can be vented to daylight. Place a minimum of 6 in. (150 mm) of wall rock in the trench. Do not use sand. Compact thoroughly with a hand tamper or plate compactor. Level the entire trench.
2. Install the blocks on the wall rock foundation with the raised front lip facing up and forward near the front of the trench. Verify the proper position of the AB blocks by sighting down the back of the raised front lip or using a string line. Level each block from side to side and front to back as installed, make adjustments as necessary. Careful attention to a straight and level base course will ensure a quality finished wall.
3. Once the entire base course is installed, fill in front of the blocks with on-site soils to keep the base course from shifting while filling and compacting the blocks. Fill the hollow cores and 12 in. (300 mm) behind the block with wall rock to the height of the block. Use infill or approved on-site soils to backfill behind the wall rock to the height of the block. Using a hand tamper or plate compactor, compact the wall rock and on-site soils behind the block in a path parallel to the wall. Check the base course of blocks for level and adjust as needed.
4. If reinforcement is needed see next page and go to [allanblock.com](http://allanblock.com) for complete details. Sweep off the top surface of the installed blocks. Stack the next course so that the block seams are offset from the course below. Check each block for level and alignment, making adjustments as needed. Fill the hollow cores and behind the block with wall rock, to the height of the block. Use infill or approved on-site soils to backfill behind the wall rock. Using a plate compactor, compact on the blocks to lock them together as well as the area behind the blocks as previously done. Repeat these steps to the top of wall.
5. Install AB Capstones for a clean, finished look. Secure in place with masonry adhesive. For a different finishing option fill the hollow cores and behind the top course with rock, mulch or dirt if plantings are desired up the face of the wall.

Visit [allanblock.com](http://allanblock.com) for complete installation details.



Use AB Reinforcement Grid when required for building taller walls or walls in poor soils.



## Reinforced Walls

1. If reinforced walls are needed, excavate behind the wall to accommodate the design length of the geogrid. Refer to your approved plans for exact length. Installing Reinforced Walls will be the same as Gravity Walls for trench and base course installation as shown on previous page. Once base course is installed and compacted, begin installing the first layer of AB Reinforcement Grid by rolling it out along the back of the wall on top of the blocks. Stake grid in place.
2. Continue installing your next courses of blocks as shown in Step 4 under Gravity Walls. Per your approved plans, install geogrid on every other course of the wall.
3. See [allanblock.com](http://allanblock.com) for complete installation details when installing geogrid on curves and corners.



More Information  
Gravity Walls



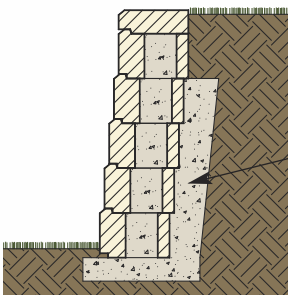
More Information  
Reinforced Walls



Installation  
Videos

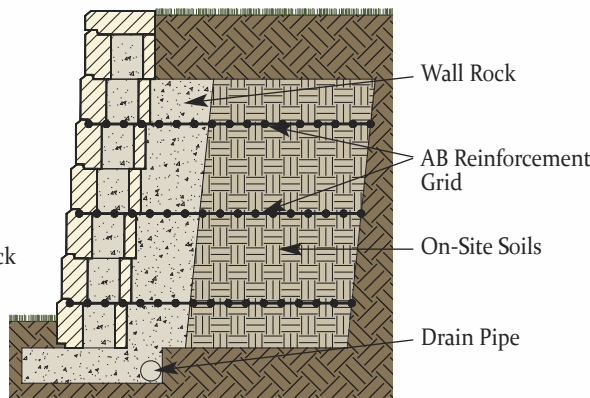
## Retaining Wall Types

### Gravity Walls



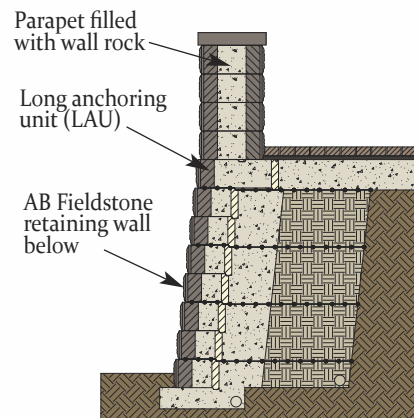
For Gravity Wall Installation - Walls under 4 ft (1.2 m)

### Reinforced Walls



For Reinforced Wall Installation - Walls over 4 ft (1.2 m)

### Parapets with AB Fieldstone



Build free standing parapets on existing surfaces or above retaining walls.



Visit [allanblock.com](http://allanblock.com) for complete installation details.

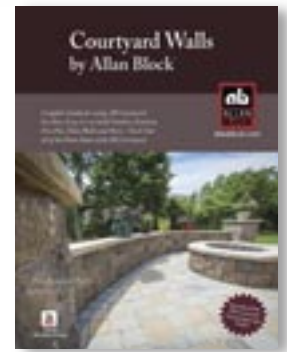
# Installation

## Build an Allan Block Courtyard Patio Wall

### Panel Installation



1. Determine the location of the wall panel on an existing concrete or paver pad. If installing on soil dig a trench that is 3 in. deep x 7 in. wide (75 mm x 178 mm) the length of the wall panel. Fill the trench with wall rock, compact and level to create a solid foundation.
2. With the raised rings facing up, install the first two courses of block at the same time on the existing patio or level foundation of wall rock. Tamp and level the blocks into place. Install the first two courses at the same time to ensure that the blocks line up properly.
3. Continue stacking courses of blocks in the pattern you have chosen until the desired height is achieved. Remember to offset the block seams on each course of blocks from the course below.
4. Finish the wall panel with Wall Caps. Secure in place with a bead of masonry adhesive.



More Information  
Wall Panels



More Information  
Posts



Installation  
Videos



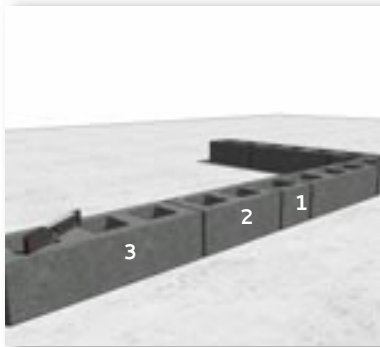
### Post Installation

1. Determine the location of the post/pillar on an existing patio. If installing on soil, dig a hole that is 4 in. deep and 24 in. square (100 mm x 600 mm). Fill with wall rock, compact and level to create a solid foundation.
2. Using 4 AB Courtyard Corner Blocks, install the first course by placing the blocks with the long sides facing out. Square up the blocks, tamp into place and level.
3. Continue stacking courses until the desired height is achieved. Alternate between the patterns to offset the seams from the course below.
4. Finish with two Post Caps. Secure in place with a bead of masonry adhesive.

Visit [allanblock.com](http://allanblock.com) for complete installation details.



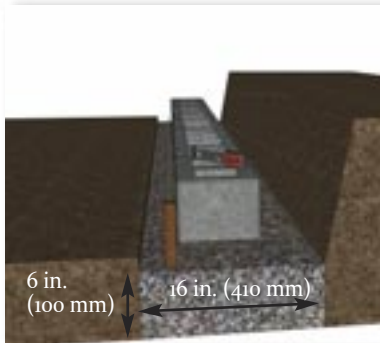
# Build an Allan Block Metro™ Patio Wall



## Installing on Existing Level Surface

1. Mark the location of the wall and using the 1-2-3 Magic Pattern, install the first course. Adjust and shim with asphalt shingles as needed, check for level as you go. Clean off the top of the blocks, then apply a generous bead of flexible construction adhesive on the top of the blocks, running down both sides of the core.
2. Install second course with a 1 core unit centered on a 3 core unit to start the Magic 1-2-3 Pattern. Adjust and level to ensure the blocks are plumb as you stack vertically. Use the flexible construction adhesive to bond and as a leveling agent. Continue using these steps with the 1-2-3 Magic Pattern to top of wall. Remember to check for level and plumb, place flexible construction adhesive on every course and to incorporate columns and corners for stability.
3. Install AB Metro Patio Wall Cappers or countertops as designed for a clean, finished look. Secure in place with flexible construction.

See [allanblock.com](http://allanblock.com) for complete details and pre-designed element layouts.



## Installing as Garden/Landscape Wall\*

1. Mark the location and remove surface vegetation. Dig a base trench up to 8 in. (200 mm) deep and 16 in. (410 mm) wide. Install wall rock, level and compact the entire trench with a hand tamper. You will need to bury a minimum of 3 in. (75 mm) of the first course.
2. Using the 1-2-3 Magic Pattern, install the first course starting with the 3 core unit followed by the 2 and 1 core on the wall rock foundation by tapping into place with a rubber mallet and leveling each block as you go. A level base course will ensure a quality finished wall.
3. Fill the block cores and backfill behind 12 in. (300 mm) with wall rock. Carefully compact to lock them in place. Sweep the blocks clean, check and adjust for level. Then apply a generous bead of flexible construction adhesive on the top of the block, running down both sides of the core.
4. Place the second course starting with a 1 core unit centered on a 3 core unit to start the Magic 1-2-3 Pattern. Fill the block cores and backfill behind with wall rock. Sweep and check the blocks for level, adjust as needed. Add flexible construction adhesive to adhere the courses together. Install additional courses as designed with same process.
5. Install AB Metro Patio Wall Cappers for a clean, finished look. Secure in place flexible construction adhesive.

\*If building on soil, see [allanblock.com](http://allanblock.com) for complete details.

Visit [allanblock.com](http://allanblock.com) for complete installation details.

# Block Collections

## Retaining Walls

### AB® Collection



#### AB Stone & AB Classic

Approx. 1 blk/ft<sup>2</sup> (11 blk/m<sup>2</sup>)  
8 in. H x 12 in. D x 18 in. L  
(200 mm H x 300 mm D x 460 mm L)  
75 lbs (35 kg)



#### AB Jumbo Junior

Approx. 2 blk/ft<sup>2</sup> (22 blk/m<sup>2</sup>)  
8 in. H x 9.5 in. D x 9 in. L  
(200 mm H x 240 mm D x 230 mm L)  
35 lbs (15 kg)



#### AB Lite Stone

Approx. 2 blk/ft<sup>2</sup> (22 blk/m<sup>2</sup>)  
4 in. H x 12 in. D x 18 in. L  
(100 mm H x 300 mm D x 460 mm L)  
35 lbs (15 kg)



#### AB Junior Lite

Approx. 4 blk/ft<sup>2</sup> (44 blk/m<sup>2</sup>)  
4 in. H x 12 in. D x 9 in. L  
(100 mm H x 300 mm D x 230 mm L)  
18 lbs (10 kg)

Caps and Corners are available.



### AB Europa® Collection



#### AB Dover

Approx. 1 blk/ft<sup>2</sup> (11 blk/m<sup>2</sup>)  
8 in. H x 10.5 in. D x 18 in. L  
(200 mm H x 265 mm D x 460 mm L)  
80 lbs (35 kg)



#### AB Palermo

Approx. 2 blk/ft<sup>2</sup> (22 blk/m<sup>2</sup>)  
8 in. H x 9.5 in. D x 9 in. L  
(200 mm H x 240 mm D x 230 mm L)  
35 lbs (15 kg)



#### AB Barcelona

Approx. 2 blk/ft<sup>2</sup> (22 blk/m<sup>2</sup>)  
4 in. H x 10.5 in. D x 18 in. L  
(100 mm H x 265 mm D x 460 mm L)  
40 lbs (20 kg)



#### AB Bordeaux

Approx. 4 blk/ft<sup>2</sup> (44 blk/m<sup>2</sup>)  
4 in. H x 10.5 in. D x 9 in. L  
(100 mm H x 265 mm D x 230 mm L)  
20 lbs (10 kg)

Caps and Corners are available.



## Smooth Face Retaining Wall Options



### AB Aztec® Collection



#### AB Aztec Classic

Approx. 1 blk/ft<sup>2</sup> (11 blk/m<sup>2</sup>)  
8 in. H x 12 in. D x 18 in. L  
(200 mm H x 300 mm D x 460 mm L)  
75 lbs (35 kg)



#### AB Aztec Junior

Approx. 2 blk/ft<sup>2</sup> (22 blk/m<sup>2</sup>)  
8 in. H x 9.5 in. D x 9 in. L  
(200 mm H x 240 mm D x 230 mm L)  
35 lbs (15 kg)



#### AB Aztec Lite Stone

Approx. 2 blk/ft<sup>2</sup> (22 blk/m<sup>2</sup>)  
4 in. H x 12 in. D x 18 in. L  
(100 mm H x 300 mm D x 460 mm L)  
35 lbs (15 kg)



#### AB Aztec Junior Lite

Approx. 4 blk/ft<sup>2</sup> (44 blk/m<sup>2</sup>)  
4 in. H x 12 in. D x 9 in. L  
(100 mm H x 300 mm D x 230 mm L)  
18 lbs (10 kg)

Caps and Corners are available.



### AB Metropolitan Collection™



#### AB Metro Classic

Approx. 1 blk/ft<sup>2</sup> (11 blk/m<sup>2</sup>)  
8 in. H x 12 in. D x 18 in. L  
(200 mm H x 300 mm D x 460 mm L)  
75 lbs (35 kg)

Caps and Corners are available.



**AB Fieldstone Collection®**



Get More Information Here



**812 facing unit w/SAU**  
 Approx. 1.5 blk/ft<sup>2</sup> (16 blk/m<sup>2</sup>)  
 8 in. H x 13 in. D x 12 in. L  
 (200 mm H x 330 mm D x 300 mm L)  
 60 lbs (30 kg)



**812 facing unit w/LAU**  
 Approx. 1.5 blk/ft<sup>2</sup> (16 blk/m<sup>2</sup>)  
 8 in. H x 23 in. D x 12 in. L  
 (200 mm H x 585 mm D x 300 mm L)  
 90 lbs (40 kg)



**824 facing unit w/SAU**  
 Approx. 0.75 blk/ft<sup>2</sup> (8 blk/m<sup>2</sup>)  
 8 in. H x 13 in. D x 24 in. L  
 (200 mm H x 330 mm D x 600 mm L)  
 125 lbs (55 kg)



**824 facing unit w/LAU**  
 Approx. 0.75 blk/ft<sup>2</sup> (8 blk/m<sup>2</sup>)  
 8 in. H x 23 in. D x 24 in. L  
 (200 mm H x 585 mm D x 600 mm L)  
 185 lbs (85 kg)



**AB Fieldstone Cap**  
 3.5 in. H x 11.5 in. D x 17.5 & 14.5 in. L  
 (90 mm H x 290 mm D x 450 & 350 mm L)  
 55 lbs (25 kg)



**AB Dogbone**  
 4 in. H x 7 in. D x 2.5 in. L  
 (100 mm H x 175 mm D x 60 mm L)

SAU - Short anchoring unit, LAU - Long anchoring unit



Contact local representative for availability, exact specifications and colors for all Allan Block products.

**Patio Seating Walls**

**AB Courtyard Collection®**

**AB Courtyard**



**AB Dublin**  
 Approx. 1.5 blk/ft<sup>2</sup> (16 blk/m<sup>2</sup>)  
 6 in. H x 7 in. D x 16.5 in. L  
 (150 mm H x 175 mm D x 420 mm L)  
 40 lbs (20 kg)



**AB York**  
 Approx. 3 blk/ft<sup>2</sup> (32 blk/m<sup>2</sup>)  
 6 in. H x 7 in. D x 7.5 in. & 9 in. L  
 (150 mm H x 175 mm D & 190 mm x 230mm L)  
 20 lbs (10 kg)



**AB Corner Block**  
 6 in. H x 7 in. D x 15 in. & 15.5 in. L  
 (150 mm H x 175 mm D x 380 & 400 mm L)  
 42 lbs (20 kg)

**AB New World Courtyard**



**AB Dublin**  
 Approx. 1.5 blk/ft<sup>2</sup> (16 blk/m<sup>2</sup>)  
 6 in. H x 7 in. D x 16.5 in. L  
 (150 mm H x 175 mm D x 420 mm L)  
 40 lbs (20 kg)



**AB York**  
 Approx. 3 blk/ft<sup>2</sup> (32 blk/m<sup>2</sup>)  
 6 in. H x 7 in. D x 7.5 in. & 9 in. L  
 (150 mm H x 175 mm D & 190 mm x 230mm L)  
 20 lbs (10 kg)



**AB Corner Block**  
 6 in. H x 7 in. D x 15 in. & 15.5 in. L  
 (150 mm H x 175 mm D x 380 & 400 mm L)  
 42 lbs (20 kg)

Caps are available with all patio wall products.

**AB Metro™ Patio Wall System**



**AB Metro™ Patio Wall**  
 Packaged and sold as sets on a pallet.



Each 3 block set will cover 2 ft<sup>2</sup> (0.2 m<sup>2</sup>).

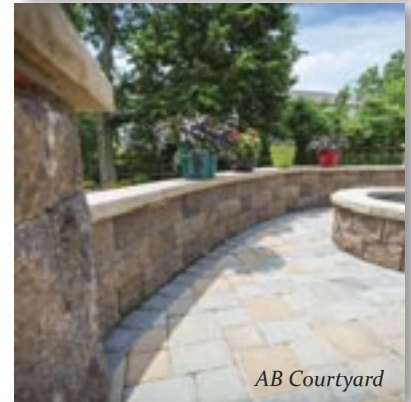
**AB Metro 8 - 1 Core**  
 8 in. L x 8 in. W x 6 in. H  
 (200 mm x 200 mm x 150 mm)  
 20 lbs. (10 kg).



**AB Metro 16 - 2 Core**  
 16 in. L x 8 in. W x 6 in. H  
 (400 mm x 200 mm x 150 mm)  
 40 lbs. (20 kg)



**AB Metro 24 - 3 Core**  
 24 in. L x 8 in. W x 6 in. H  
 (600 mm x 200 mm x 150 mm)  
 60 lbs. (30 kg)



Visit [allanblock.com](http://allanblock.com) for more information.

*Visit [allanblock.com](http://allanblock.com) for more information  
on the ideas and products from Allan Block.*



[allanblock.com](http://allanblock.com)