



2016 PRODUCT CATALOG

Our mission is to develop the most effective formulations and delivery systems in Plant Health Care. As the premier solutions provider, we are committed to advancing technology in the industries we serve through thought leadership, scientific research, and exceptional customer service. As a leader, we recognize ethical behavior, environmental responsibility, and good stewardship are essential in sustaining our business, our customers and our planet.

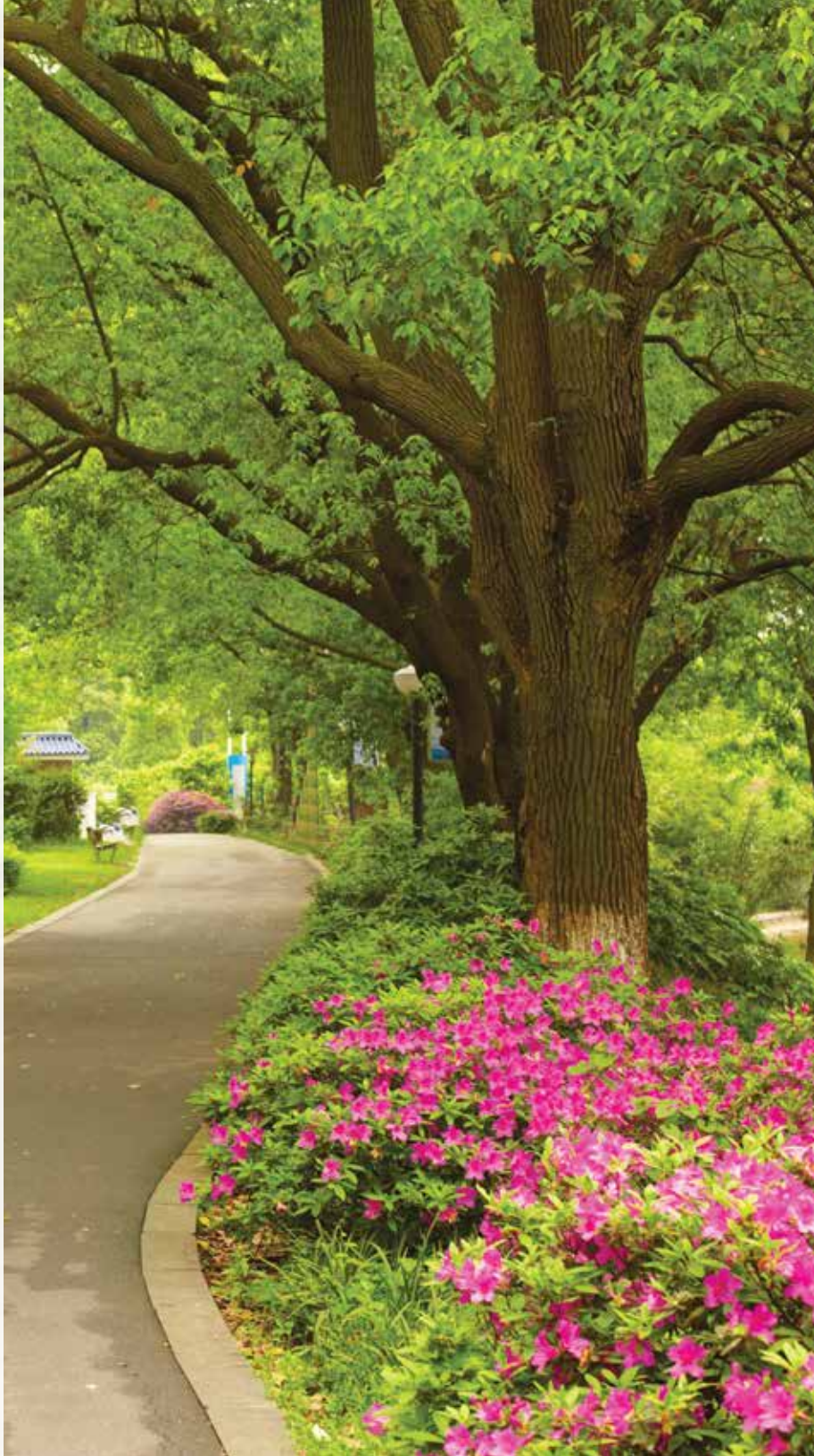


TABLE OF CONTENTS



About Arborjet 2

Insect Control 4

Disease Control 6

Fertilizers 8

Cleaning & Priming Solution 10

Equipment-QUIK-jet® and QUIK-jet Air® 11

Equipment-TREE I.V. 12

Equipment - VIPER Hydraulic and Palm Injector Kit .. 13

Choosing Equipment 14

Arborplug® Technology 15

Arborplug and VIPER Needle Options 16

Stinger Options..... 17

TREE I.V. Replacement Parts 18

QUIK-jet and QUIK-jet Air Replacement Parts..... 19

Training & Marketing Materials..... 20

Warranty Information..... 22

Regional Technical Managers 23

Notes 24

Product offering, part numbers and specifications are subject to change without notice. Not all products are available in all areas due to state or local laws. Typographic and/or descriptive errors are subject to correction.



Flag denotes item is manufactured or formulated in the USA.

ABOUT ARBORJET

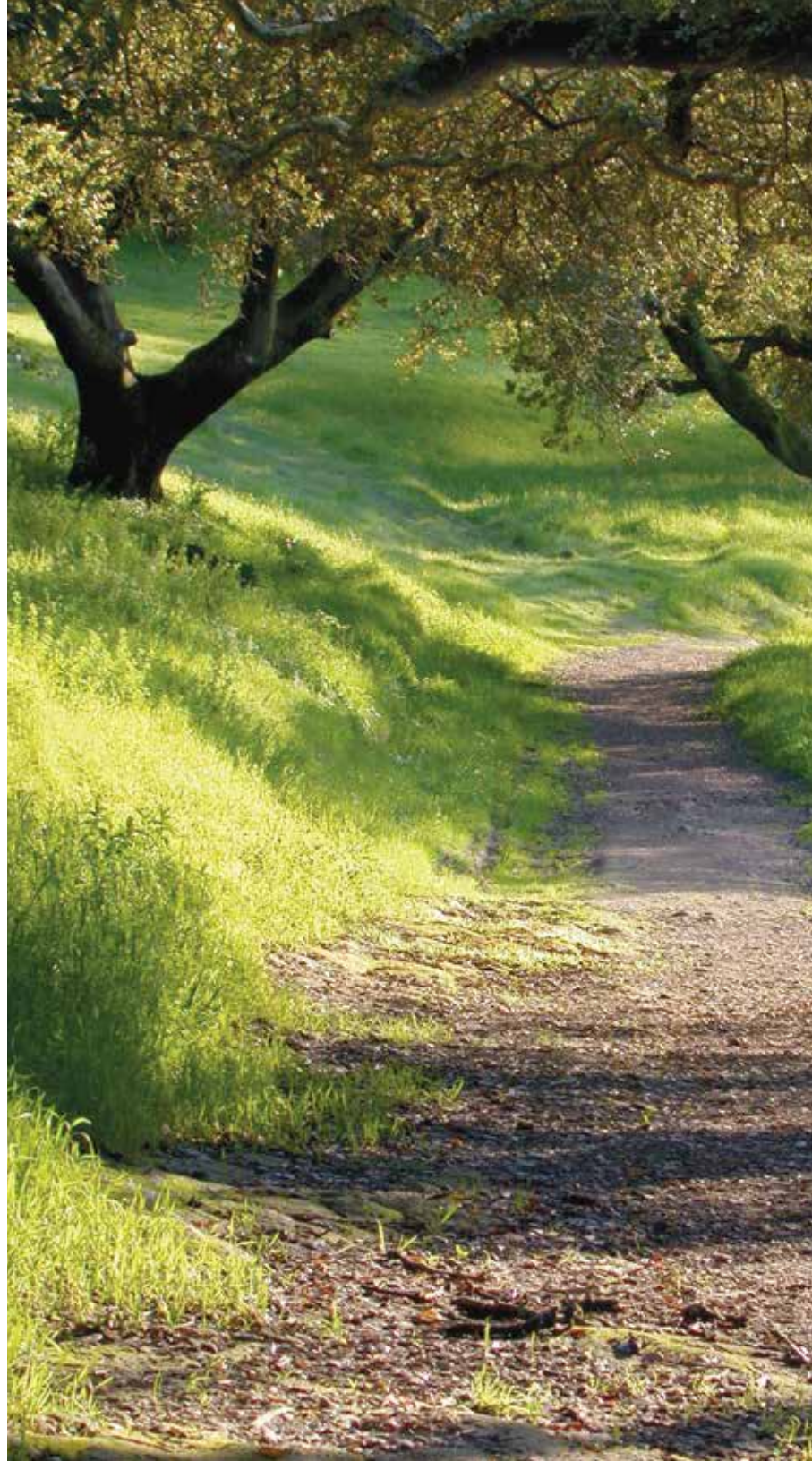


OUR HISTORY - Arborjet was initially developed by arborists for arborists in order to effectively manage and control the many exotic and native insects, pests, and diseases threatening our natural and urban forests. Founded in 2000 by Peter M. Wild, owner of Boston Tree Preservation in Woburn, MA, Arborjet was established out of Peter's intent of finding a way to control Hemlock Woolly Adelgid, saving thousands of trees since the company's inception. Today, as the leading provider of tree care solutions, that same passion for innovation and service drives Arborjet to expand the types of technology created and industries served, changing the face of plant healthcare.

OUR RESEARCH - Our unique method of developing formulations includes a pairing process which matches the active ingredient and application method with the physiology of the plant. Whether treating ash trees in Chicago, palms in Miami, or tomato plants in Fresno, this approach is why you will find significantly longer residual control and superior overall performance with our products. Our ability to achieve such high levels of performance while maximizing uptake efficiency and protecting against phytotoxicity and other harmful side effects sets Arborjet apart.

OUR TEAM - At Arborjet, personal attention is a large part of who we are. You will always receive prompt and friendly service from knowledgeable and well-trained staff. We are happy to answer your questions and help you decide which solutions are right for your plant healthcare needs. We care about you and your success. Many of our staff are Certified Arborists, Pest Control Advisors, and hold board positions in major industry associations. Our Technical Advisors have a combined total of over 250 years in the green industry. Your successful plant health care program helps us realize our mission.

Call us at 781.935.9070 or visit us at www.arborjet.com.
Thank you for your interest.



"Arborjet is truly the future in tree and palm care. It is easy to use and the customer support is fantastic."

~ Patrick Floyd
Corey Enterprises Lawn
and Landscape, Inc.
Palm Coast, FL



TREE-äge®

(4% Emamectin Benzoate)

TREE-äge® insecticide is delivered into the tree's vascular tissue to assure rapid distribution and consistent results.

(040-4100) 1 liter*

(040-4105) 1 liter case of 8

***One liter treats 33 trees (10" DBH)**

Effective for: Emerald Ash Borer; Western, Southern, and Mountain Pine Beetles; Gypsy Moth; Winter Moth; Flatheaded Borers; Bagworm; Leafminers (Lepidoptera, Coleoptera, Hymenoptera) and many more

In addition to the pests noted on the TREE-äge federally registered label, Arborjet supports a FIFRA Section 2(ee) recommendation for TREE-äge insecticide to control additional bud and leaf and shoot, stem, trunk and branch pests. Please see the section 2(ee) recommendation to confirm that the recommendation is applicable in your state.



ACE-jet®

(97% Acephate)

Micro-injectable broad spectrum systemic insecticide for the management of specific insect pests of forests, trees, landscape ornamentals and interior plantscapes.

(040-2011) Box of 20/15 grams*

(040-2013) Single Packet/15 grams*

*** One 15 gram packet treats 1 tree (minimum 11" DBH)**

Effective for: Leaf chewing insects including Caterpillars, Pine Tip Moth, Winter Moth, Gypsy Moth, Eastern Tent Caterpillars, Fall Cankerworm, Fall Webworm, piercing-sucking insects such as Adelgids (including Hemlock Woolly Adelgid), Aphids, Spider Mites, Scale, Boxelder Bugs and chewing and mining insects such as EAB, Leafminers, Sawflies, Birch Leafminers and many others

TREE-äge® G4

(4% Emamectin Benzoate)

New formulation, now available as a General Use Pesticide.

(040-4120) 1 quart*

(040-4125) 1 quart case of 4*

*** One quart treats 37 trees (10" DBH)**



IMA-jet®

(5% Imidacloprid)

Micro-injectable systemic insecticide for the management of specific insect pests of forests, trees, landscape ornamentals and interior plantscapes.

(040-2003) 1 liter*

(040-2004) 1 liter case of 8

(040-20020) 1 liter (Canada)

(040-20025) 1 liter case of 4 (Canada)

*** 1 liter treats 25 trees (10" DBH)**

Effective for: Adelgids (including Hemlock Woolly Adelgid), Aphids, Leaf Beetles (including Elm and Willow Leaf Beetles), Borers (including Emerald Ash Borer, Asian Longhorned Beetle and Bronze Birch Borer), Lacebugs, Leafhoppers, Leafminers, Mealybugs, Psyllids, Scale Insects and Whiteflies

Note: IMA-jet is only labeled for Emerald Ash Borer and Asian Longhorned Beetle in Canada.

IMA-jet® 10

(10% Imidacloprid)

The IMA-jet formulation you've come to trust, now available in a 10% formulation. Inject half the formulation, saving time and labor costs.

(040-20010) 1 liter*

(040-20015) 1 liter case of 4

*** 1 liter treats 50 trees (10" DBH)**

NOW AVAILABLE IN CANADA!



Visit arborjet.ca for Canada-specific information



NEW SIZES AVAILABLE



AzaSol™



Water Soluble Bio-Insecticide from Neem

(6% Azadirachtin)

Broad spectrum insecticide botanically derived from the Neem plant. Can be used as a spray, soil drench, tree injection or through chemigation.

(040-5001) 6 oz. container (8 packets, 0.75 oz each)*
(040-5010) Single packet (1 packet, 0.75 oz)
(040-5020) Single packet (1 packet, 0.25 oz)
(040-5030) 2 lb container

***6 oz. treats approximately 1 to 3 acres as an agricultural spray (mixes with 50-150 gallons of water) and approximately 43 trees (10" DBH) as a trunk injection.**

Effective for: Whiteflies, Leafminers, Scale, Mealybugs, Thrips, Aphids, Psyllids, Bugs, Flies, Sawflies, Caterpillars, Beetles, Weevils, Borers, Mole Crickets, Mushrooms Flies and Pests of Turf Grass

Eco-Mite+™



(Rosemary, Peppermint, and Cottonseed Oil)

Eco-Mite Plus® is a contact miticide and insecticide, derived from botanical plant oils and extracts.

(040-7000) 32 oz. RTU
(040-7002) 8 oz. concentrate
(040-7005) 1 quart concentrate*
(040-7020) 1 gallon

***1 quart of concentrate treats up to 5,000 square feet**

Effective for: Phytaphagous Mites, eggs, and nymphs; Aphids, Mealybugs, Scale Crawlers, Thrips, Whiteflies, and other piercing-sucking insects

DISEASE CONTROL



Eco-PM™



(Thyme and Clove Oil)

Eco-PM® is a broad spectrum contact fungicide, derived from botanical plant oils and extracts.

(040-8000) 32 oz. RTU
(040-8002) 8 oz. concentrate
(040-8005) 1 quart concentrate*
(040-8020) 1 gallon

***1 quart of concentrate treats up to 6,000 square feet**

Effective for: Powdery Mildews, Botrytis Gray Mold, Phytophthora Late Blight, Black Spot, Anthracnose, and Rust

PHOSPHO-JET™



(45.8% Phosphorous Acid)

Systemic fungicide and plant health response elicitor for the suppression of various plant diseases for use in spring or fall.

(040-3011) 1 liter*
(040-3016) 1 liter case of 8

***1 liter treats 20 trees (10" DBH)**

Effective for: Sudden Oak Death, Anthracnose, Phytophthora, Black Spot, Scab, Fire Blight in Apple, Root Rot in Avocado and Citrus, Canker Blight and many others



Propizol™



(14.3% Propiconazole)

Systemic fungicide for trunk injection or spray application on trees, grasses, shrubs and flowers.

(040-6300) 1 liter*
(040-6302) 1 gallon
(040-6310) 1 liter case of 4

***1 liter treats 10 trees (10" DBH), up to 1.5 acres for turfgrass applications, and makes up to 1,700 gallons for ornamental spray applications.**

Effective for: Oak Wilt, Dutch Elm Disease, Sycamore, Anthracnose, and leaf diseases on Crabapples, plus Conifer Blights/Spots, Powdery Mildew, Rust, and broad spectrum disease control for grasses and ornamental plants

Arborjet also supports a FIFRA 2(ee) recommendation for the use of Propizol to prevent and/or control additional diseases. Please see the section 2(ee) recommendation to confirm that the recommendation is applicable in your state.



Arbor-OTC™



(36.7% Oxytetracycline)

Water-soluble powder with flexible mixing rates and longer shelf life. Micro-injectable systemic antibiotic for the treatment of bacterial infections of trees and palms.

(040-7500) 1 oz. (28 grams) container*
(040-7505) 5 oz. (140 grams) container

***1 oz. (28 g.) container treats 10 trees (10" DBH)**

Effective for: Ash Yellowings, Bacterial Leaf Scorch, Fire Blight, Leaf Spot, Lethal Yellowings, Phytoplasma Disease, Texas Phoenix Palm Decline





Thiazol™ 20-S

(20% Thiabendazole)

The latest addition to Arborjet's disease control category, Thiazol™ 20-S is labeled for the treatment and prevention of Dutch Elm Disease and Sycamore Anthracnose via macroinfusion.

(040-6400) 2 gallons*

***2 gallons treats 128 trees (10" DBH) for Dutch Elm Disease and up to 128 trees (10" DBH) for Sycamore Anthracnose**

Effective for: Dutch Elm Disease and Sycamore Anthracnose

FERTILIZERS



NutriRoot™ is a unique blend of essential minerals, seaweed extract, humic acid, surfactants, and humectants designed to increase root development and to reduce water stress in trees, shrubs and lawns.

(030-4100) 8 oz. container*

(030-4101) 1 quart container

(030-4102) 32 oz. hose end sprayer

(030-4103) 1 gallon container

***8 oz. treats 5 trees for transplanting, new plantings, landscape installations, or existing landscapes**

Effective for: Root development, transplant success, water stress management, nutritional deficiencies, sandy soils, dry soil conditions, summer & winter stress



ARBORCHAR™

ALL PURPOSE GROW 5-6-4 PREMIUM FERTILIZER & BIOCHAR BLEND

(5.0% Nitrogen, 6.0% Phosphorous, 4.0% Soluble Potash, 6.0% Calcium, 2.0% Magnesium)

ARBORChar™ All Purpose Grow is a complete fertilizer and biochar blend for improving leaf vigor, root development and soil structure in indoor and outdoor plants, trees, shrubs and lawns.

(030-5110) 1 lb Blend*

(030-5115) 4 lb Blend

***1 lb covers 200 square feet**

Effective for: General plant nutrition, improving sandy soils, increasing water retention, reducing nutrient leaching and soil compaction.

ROOT, FLOWER & FRUIT 3-6-4 PREMIUM FERTILIZER & BIOCHAR BLEND

(3.0% Nitrogen, 6.0% Phosphorous, 4.0% Soluble Potash, 10% Calcium, 2.5% Magnesium)

ARBORChar Root, Flower & Fruit is a complete fertilizer and biochar blend for improving leaf vigor, root and fruit development and soil structure in indoor and outdoor plants, trees, shrubs and lawns.

(030-5120) 1 lb Blend*

(030-5125) 4 lb Blend

***1 lb covers 200 square feet**

Effective for: Adding Calcium to inhibit Blossom End Rot, general plant nutrition, improving sandy soils, increasing water retention, and reducing nutrient leaching

SUMMER STRESS 0-0-9 PREMIUM FERTILIZER & BIOCHAR BLEND

(9.0% Soluble Potash, 5% Magnesium, 1.5% Iron)

ARBORChar Summer Stress is an unique blend of biochar, humectants and fertilizer for reducing watering while improving leaf greening in stressed conditions, root development and soil structure in indoor and outdoor plants, trees, shrubs and lawns.

(030-5130) 1 lb Blend*

(030-5135) 4 lb Blend

***1 lb covers 100 square feet**

Effective for: Nitrogen and Phosphorus sensitive areas, adding Iron to maintain green in hot months, decreasing seasonal deficiencies of Potassium and Magnesium, improving sandy soils, and increasing water retention.





MINJET IRON W/ MANGANESE

(0.75% Fe, 0.38% Mn, 0.2% Zn, 0.10% Cu, 0.10% B)

Works for iron chlorosis caused by iron deficiency.
A good choice as a general tree nutrition.

(030-4010) 1 gallon*

***1 gallon treats 37 trees (10" DBH)**

Effective for: Oaks, Birch, Beech, Cherry, Elm, Horse Chestnut, Linden, Poplar, Sycamore and others



PALM-JET Mg 1-2-2

(1.0% N, 2.0% P, 2% K, 1% Fe, 2.2% Mn, 0.75% Mg, 0.4% Zn, 0.07% B)

We've added more magnesium to our PALM-jet formulation to combat new nutrient deficiencies in Palms! Not only is PALM-jet Mg great for palm trees, it offers a great nutrient package for hardwoods, too.

(030-4130) 1 liter*

(030-4135) 1 liter case of 4

***1 liter treats approximately 66 medium size palms or 25 hardwoods**

Effective for: Palms and hardwoods

Also works on hardwoods!

CLEANING & PRIMING SOLUTION



CLEANJET

(0.5% Alkylary Polyalkoxylated Alcohols - Trace Fragrance)

All purpose cleaner and lubricant for all Arborjet injection devices; extends the life of the internal device o-rings.

(030-2030) 1 liter

(030-2034) 1 liter case of 12

QUIK-JET[®] KIT

(070-2250)

The QUIK-jet is a cost effective injection tool designed for lower dose applications. It can also be used as a diagnostic tool to assess tree health and vascular activity. The QUIK-jet kit is a good starter kit for someone just getting into trunk injection and a great complementary tool to the TREE I.V.

KIT INCLUDES

- 1 QUIK-jet device
- 2 1-Liter supply bottles
- 1 Protective storage bag for QUIK-jet device
- 1 Belt hook
- 1 Belt clip
- 1 Arborplug setter
- 1 3/8" drill bit
- 1 9/32" drill bit
- 1 Needle clean out tool
- 1 Pair of safety glasses
- 1 Graduated cylinder
- 1 Storage bucket
- 1 Funnel
- ½ Liter of CLEAN-jet
- 1 Training manual



QUIK-JET[®] AIR KIT

(070-2350)

The QUIK-jet Air features one-thumb switch operation, precise dose measuring, and air-powered injection in a rugged aluminum body weighing less than 2 pounds. You'll notice the difference when you make the switch and use QUIK-jet Air. See manual for air tank refill instructions.

KIT INCLUDES

- 1 QUIK-jet Air device
- 1 Liter supply bottle
- 1 Protective storage bag for QUIK-jet Air device
- 1 Arborplug setter
- 1 3/8" drill bit
- 1 9/32" drill bit
- 1 Needle clean out tool
- 1 Pair of safety glasses
- 1 Graduated cylinder
- 1 Funnel
- ½ Liter of CLEAN-jet
- 1 Training manual
- 1 3000 PSI Air Tank

Visit arborjet.com/air to see it in action!



TREE I.V. 2-PACK KIT

(070-0010)

Our most versatile injection system. For coniferous and hardwood trees. High volume, low pressure, can be used with mixable products. A perfect starter kit.



KIT INCLUDES

- 1 Bucket
- 2 TREE I.V. bottles
- 8 VIPER valve assemblies
- 2 TREE I.V. manifold 4-line
- 2 TREE I.V. stands
- 2 VIPER needle clean-out tools
- 1 Pressure pump
- 1 TREE I.V. tool kit
- 1 3/8" drill bit
- 1 Pair of safety glasses
- 1 9/32" drill bit
- 1 Arborplug setter
- 1 Graduated cylinder
- ½ Liter of CLEAN-jet
- 1 Funnel
- 1 Training manual

TREE I.V. PRO KIT

(070-0036)

Designed for high dosage applications in all tree sizes and types. All the components you need for high production, including an extra TREE I.V. and Arborjet bucket instead of a carrying case.



KIT INCLUDES

Contents of TREE I.V. 2-Pack PLUS:

- 2 additional TREE I.V. bottles
- 8 additional VIPER valve assemblies
- 2 additional TREE I.V. manifold 4-line
- 2 additional TREE I.V. stands
- 1 TREE I.V. expansion manifold
- 1 QUIK-jet device
- 1 liter supply bottle
- 1 Protective storage bag for QUIK-jet device
- 1 Belt hook
- 1 Belt clip
- 1 12 pack bungee cord 12-22"

VIPER HYDRAULIC KIT

(010-1001)

For high production programs, government contracts, and agriculture.

KIT INCLUDES

- VIPER Air/Hydraulic Device
- Hard carrying case
- Canvas carrying bag for field use
- 4500 psi Air Tank
- High Pressure Regulator Assembly
- 2 VIPER Kit Needles & Sheath
- 1 Belt Hook
- Viper Needle Cleanout 2 pack
- Arborplug Setter
- 3/8" Drill Bit

Effective for: Deciduous & ornamental trees



- 9/32" Drill Bit
- 1 Liter Supply Bottle x 2
- Device Cleaning Syringe
- Spray Shield Device
- Graduated Cylinder 250 mL
- Hydraulic O-Ring Kit
- ½ Liter of CLEAN-jet
- Pair of Safety Glasses
- Funnel
- Training Manual

OPTIONAL ADD-ONS



HYDRAULIC QD
HP LINE - VIPER
(010-5027) . . . \$120



VALVE UPGRADE
(010-2009) . . . \$110



TANK CONVERSION COMPONENTS

AIR TANK
(975-00179) . . . \$269



SHUT-OFF
(975-00180) . . . \$24.99

(Conversion Kit required on systems purchased prior to 2012)

PALM INJECTOR KIT

(070-0161)

Designed specifically for palms, this kit can be added to your TREE I.V. or QUIK-jet device to give maximum flexibility when treating palm trees. The Palm Injector Kit offers two needle choices and the ability to inject directly or remotely with or without an Arborplug.

Effective For: Palm trees. Only one injection site is needed to apply the formulations to each palm.

KIT INCLUDES

- Drill Bit 3/16 x 8" Palm Drill
- PTC 1/4" to 5/32" Reducers
- 5/32" Tubing
- STINGER - Palm Needle 8"
- VIPER Needle and line
- Palm Injector bag



WHICH INJECTION SYSTEM IS RIGHT FOR YOU?

TREE I.V.

- Great all-around system
- Best option for slower uptake trees such as conifers, but also good for hardwoods and palms
- Higher volumes of over 100 mL per tree, like fungicide or nutrient applications
- Quantity of larger trees in the same location

QUIK-jet

- Fast and easy to use
- Best option for ring porous or low-resistant trees like red oak, sycamore, elm, poplar, tulip poplar, sweetgum or palm
- Lower volumes of under 20 mL per injection site, like insecticide applications
- Smaller trees and projects
- Can connect directly to product bottle for undiluted applications

QUIK-jet Air

- Powerful and productive
- Best option for diffuse porous or low - to moderate -resistant trees like ash, maple, white oak, plus those listed for QUIK-jet
- Low-to moderate- volumes of 40 mL or less per injection site, like insecticides and undiluted fungicides or nutrients
- Treat any size trees and up to 200 16" DBH trees per air tank refill
- Can connect directly to product bottle for undiluted applications



DRILL



PLUG



INJECT

ARBORplugs®

The patent pending Arborplug is a technological advancement in trunk injection and a key component of the Arborjet injection methodology.



#4 Arborplug 3/8"
(070-0155) Pack of 100

Recommended for: Conifers and medium to large trees.



#3 Arborplug 9/32"
(070-0150) Pack of 100

Recommended for: Small to medium deciduous trees.

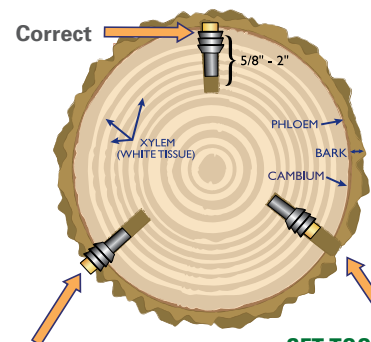
Advantages of the Arborplug

- Tight seal for fast, consistent injection.
- Protects the surrounding environment and the applicator from unintended product contact.
- Minimizes the number of injection sites and helps to inhibit infection.

Proper Arborplug Placement

SET CORRECTLY

- Fastest rate of uptake
- Least chance of leakage
- Best protection of the cambium
- Fastest wound closure (growth over the Arborplug)



SET TOO SHALLOWLY

- Highest chance of leakage
- Higher chance of bark splitting
- Least protection of the cambium
- Slower wound closure (pushes the Arborplug out)

SET TOO DEEPLY

- Slowest rate of uptake
- Higher chance of leakage
- Deeper wound than necessary



Creates the perfect injection interface; internal septum "seals" injection site.



Enables rapid, high volume product delivery directly into the xylem tissue.



Prevents internal wood decay or infection & speeds site closure & healing.

ARBORPLUG AND VIPER NEEDLE OPTIONS



VIPER Needle
(070-0501)

Components: 4 Needles



VIPER Needle Line Extension
(070-0630)



Arborplug Setter 2-Pack
(070-0120)



Drill Bit Kits*
(010-4040) Drill Bit 2-Pack Kit #3 and #4
(070-2000) Drill Bit 2-Pack Kit #4
(070-2010) Drill Bit 2-Pack Kit #3



STINGER OPTIONS



When you don't need an Arborplug



STINGER Needle & Valve Assembly 2 Pack
(070-0600)



STINGER Needle & Valve Assembly 4 Pack
(010-5005)



STINGER Needle 2 pack
(070-0620)



STINGER Needle Line Extension
(070-0640)



Drill Bit – 7/32" STINGER 2 pack *
(070-2020)

*These items are not manufactured or produced in the USA

QUALITY



*"Thanks to PHOSPHO-jet,
over 80 specimen trees were
saved on this golf course."*

~ Seth MacDonald
E. Tree
Plantation, FL



ADDITIONAL ACCESSORIES

Diameter Tape
(975-00165)

Measures tree size. 3/8" x 12' compact measuring tape
instantly converts tree circumference to diameter inches (DBH).



QUIK-jet Injection Device *
(070-2235)

No accessories included.



Drill Bit – 3/16" Palm (8" long) *
(975-00047)

Hydraulic - QD HP Line - Palm
(010-5029)



STINGER Palm Needle 2 pack
(070-0650)



TREE I.V. REPLACEMENT PARTS



VIPER Valve Assembly
(070-0500) 2-Pack

Components: 2 Valves & Needles



PTC 10/32" to 1/4" Push *
(070-0100) 4-Pack



PTC 10/32" to 5/32" Push *
(070-0101) 4-Pack



Deluxe Valve Cartridge
(070-0110) 2-Pack



TREE I.V. O-Ring Rebuild Kit
(010-3055)



TREE I.V. Expansion Kit
(010-7016)

Expand the number of injectors per TREE I.V. unit from 4 to 8.



Tubing 1/4" EVA 5'
(070-0102)

Components: 5 feet of 1/4"



Tubing 5/32" Poly 10'
(070-0103)

Components: 10 feet of 5/32"



1 Liter TREE I.V. Supply Bottle
(010-9023)

QUIK-JET REPLACEMENT PARTS



QUIK-jet Rebuild Kit
(070-2281)



1 Liter Supply Bottle
(010-9022)



QUIK-jet Glass Barrel *
(975-9446)



QUIK-JET AIR REPLACEMENT PARTS



QUIK-jet Air Rebuild Kit
(070-2360)



QUIK-jet Air Glass Barrel
(975-1008)



QUIK-jet Air In-line Check Valve
(070-2366)



QUIK-jet Air Output Check Valve
(975-1122)



Arborjet has a variety of high quality training and marketing resources available to train personnel and grow your Arborjet Plant Health Care business. Materials are available for purchase through Arborjet or as a free download from our website.

FREE Downloads
arborjet.com



ARBOR-mobile™

The new ARBOR-mobile smartphone app from Arborjet offers instant access to a Solution Finder to help diagnose tree issues, an Emerald Ash Borer Cost Calculator, Tree Tag™ capability using GPS, and more. Tree care professionals can now easily access Arborjet's knowledge base and online tools while in the field or on the road with ARBOR-mobile, a new mobile phone application available on the **Apple App Store** and **Google Play**.



Custom Video for Service Providers

Arborjet has developed an offering to help you produce a customized video to share with your customers. The video features your logo, pests you treat, and your contact information to be contacted by your customers. It's free – you pay \$150 up front and we'll reimburse you 3 packs of Arborplugs®. Florida Specific Option available.

Visit arborjet.com/customvideoprogram



Custom Trunk Injection Handout (020-4015) 50pc

A 2 sided 8½" x 11" custom color sales sheet outlining the advantages of injecting using the Arborjet method to homeowners. It explains how it works and what it does. Space on back for attaching your business card or adding text.
Free download on website.

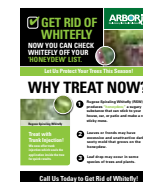


Custom Emerald Ash Borer Handout (020-4019) 50pc

Full-color customizable 8.5x11" handout outlining the benefits of trunk injection treatments for EAB.
Free download on website.

Spiraling Whitefly Handout (020-4017) 50pc

A 50 pack of 8.5" x 11" glossy handouts printed both sides with information about spiraling whitefly and available Arborjet treatments. Includes space on back to attach business card or sticker with company information.
Free download on website.



Arborjet Pest Reference Booklet (020-1050)

8 ½ by 11" booklet outlining tree insects & treatment, tree diseases & treatment, nutritional supplements, and trees & uptake characteristics.
Free download on website.



EAB Doorhanger (020-4002) 50pc

4.25" x 11" Full color, double sided doorhanger for promotion of EAB treatment with space for attaching your logo or business card.



FRONT

BACK

Trunk Injection Doorhanger (020-4018) 50pc

Educate customers and prospects about why your company uses Arborjet Trunk Injection and what it means for their trees. Adequate space for attaching business cards.



FRONT

BACK

Whitefly Doorhanger (020-4016) 50pc

Check whitefly marketing off your "honeydew" list and order these doorhangers today. Tell your customers that you're a leader in Rugose Spiraling Whitefly treatments. Sold in 50 packs.



FRONT

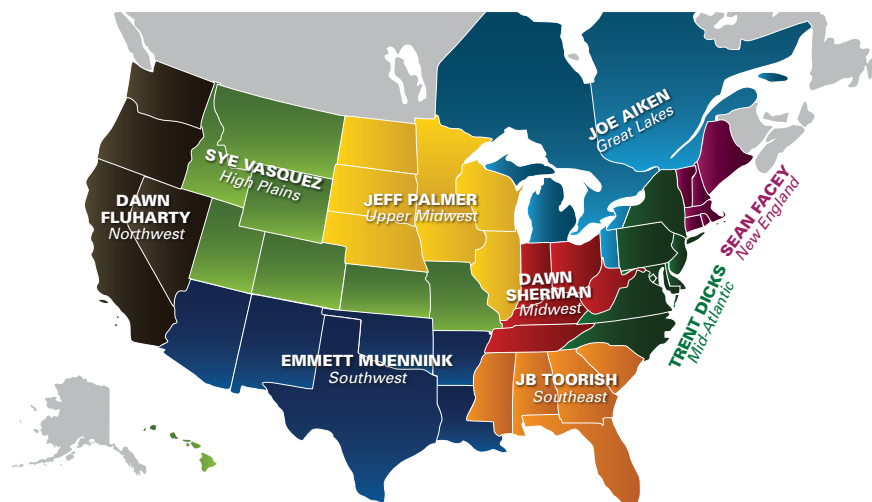
BACK

To find a distributor near you visit arborjet.com.
For customer service call 1.781.935.9070 or visit us online.

Arborjet is committed to providing the personal service you deserve. We stand behind all of our products and want to make sure you are completely satisfied.

WARRANTY: Arborjet equipment is warranted for 90 days against defects in workmanship and materials. **RETURNS:** 1. Locate original invoice and contact Arborjet. 2. Upon authorization, package item appropriately, including a copy of the original invoice, and ship prepaid to: Arborjet Inc, Merchandise Return, 99 Blueberry Hill Rd, Woburn, MA 01801 (Conditions: all returns must be authorized by Arborjet and must be accompanied by original invoice. Unless otherwise warranted, all returns must be made within 30 days of purchase. A 20% restocking fee will be applied to returns of non-defective goods. All sales of liquid products are final. Credit or refund will be applied when returned merchandise is received by Arborjet. Returns which are deemed to be in good working order or returns for goods damaged and not defective shall be returned to customer if customer prepays the freight. These goods will be held for 30 days after notification and then destroyed without liability of replacement or refund by Arborjet).

Have questions? Contact your Regional Technical Manager for more information.



Great Lakes

Joe Aiken
C: 586-431-7282
joeaiken@arborjet.com
States: MI, Western PA, Western NY, Canada

Mid-Atlantic

Trent Dicks
C: 309-287-0173
tdicks@arborjet.com
States: Eastern NY, Eastern PA, NJ, DE, MD, VA, NC, WV

Southeast

JB Toorish
C: 781-983-2613
jbttoorish@arborjet.com
States: AL, GA, FL, SC

Southwest

Emmett Muennink
C: 214-799-6115
emuennink@arborjet.com
States: AZ, NM, TX, OK, AR, LA

Northwest

Dawn Fluharty
C: 650-996-8291
dfluharty@arborjet.com
States: CA, WA, OR, NV

High Plains

Sye Vasquez
C: 808-870-9029
syevasquez@arborjet.com
States: MO, KS, CO, WY, MT, UT, ID, HI

Upper Midwest

Jeff Palmer
C: 651-955-3319
jeffpalmer@arborjet.com
States: MN, IL, WI, IA, NE, ND, SD

Midwest

Dawn Sherman
C: 513-910-4450
dsherman@arborjet.com
States: IN, KY, OH, TN, MS

New England & Horticulture

Sean Facey
C: 978-604-7490
seanfacey@arborjet.com
States: ME, NH, VT, MA CT, RI

Product Support

Marianne Waindle
C: 916-205-7928
mwaindle@arborjet.com
Located in California

You can also contact the home office M-F 8-4:30 EST at 781-935-9070 or ajinfo@arborjet.com.



[illegible][illegible]



99 Blueberry Hill Road • Woburn, MA 01801

To speak with a customer service
representative, call 781-935-9070 or visit us
online at www.arborjet.com

