

# BELAIR WALL<sup>®</sup> 2.0

*FREESTANDING & RETAINING WALL*

CHISELED STONE APPEARANCE FOR SOPHISTICATED LANDSCAPES





# BELAIR WALL® 2.0

FREESTANDING & RETAINING WALL

CHISELED STONE APPEARANCE FOR SOPHISTICATED LANDSCAPES

## ☑ FEATURES & BENEFITS

- Freestanding & gravity walls\* can be built up to 3 feet high, including buried course
- Taller walls can be built using geosynthetic reinforcement when designed by a qualified engineer
- Rear-lip on retaining wall block makes installation fast and accurate
- Freestanding Walls: 4-foot minimum radius using all 3 units
- Retaining Walls: 1"/9.5° Setback/System batter
- Minimum outside radius, measured on the top course to the front of the units: 4 feet
- Minimum inside radius, measured on the base course to the front of the units: 8 feet

## 🧱 SHAPES & SIZES\*\*

### SRW



6 x 6 x 8



6 x 10 x 8



6 x 16 x 8

### FSW



6 x 6 x 5



6 x 10 x 5



6 x 16 x 5

### COLUMN/CORNER



6 x 16 x 8

### TRAPEZOID DOUBLE-SIDED CAP



3 x 7/8 x 13 1/2

### CAP END 3-SIDED



3 x 8 x 13 1/2

### WALL END 3-SIDED



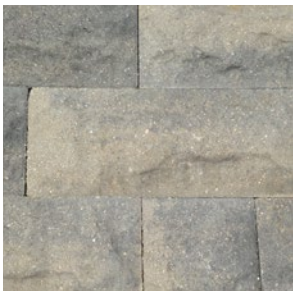
6 x 8 x 11

### U START BASE BLOCK®



3 1/2 x 18 1/2 x 12

## 🔥 AVAILABLE COLORS



COTSWOLD MIST



GASCONY TAN

**BELGARD®**

PAVES THE WAY

For more info, visit [Belgard.com](http://Belgard.com)

**NORTHFIELD CENTRAL**

One Hunt Court  
Mundelein, IL 60060  
Ph: 877-222-1557

N59 W14909 Bobolink Ave.  
Menomonee Falls, WI 53051  
Ph: 262-338-5700



© 2023 Oldcastle® APG, Inc. A CRH Company. All Rights Reserved.  
Revised: 03/30/23 BEL22-412\_NFD C