



CornerStone[®]

CornerStone offers a clean, chiselled profile that makes it suitable for commercial and residential applications. The interlocking lugs and tapered sides make for easy installation and when filled with aggregate, provide high shear resistance and strength.



Features & Benefits:

- Connected with mortarless, SecureLug interlock system
- Unique hollow core design allows for minimal manpower and no special equipment to install

Colours:



Grey



Charcoal



Desert Buff*



Rustic*

Colour availability and colour finish may vary by region. Every attempt has been made to provide accurate data - please note product measurements, weights and coverage are approximate.

* Special Order

Technical Information

CORNERSTONE					
PRODUCT	DIMENSIONS	UNITS/ PALLET	SQFT/ PALLET	BLOCK COVERAGE	PALLET WEIGHT
CornerStone Straight	457 x 305 x 203mm 18 x 12 x 8"	40	40	1 / SqFt	3228 lbs 1464 kg
CornerStone Corner	300 x 200 x 200mm 12 x 8 x 8"	32	N/A	N/A	2583 lbs 1172 kg

See Coping Units Information Sheet For Details

CornerStone

Applications:



WALL



PLANTER



STEPS

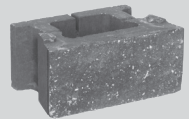


ENGINEERING
AVAILABLE

Shapes & Sizes:

CORNERSTONE STRAIGHT

457 x 305 x 203mm
18 x 12 x 8"



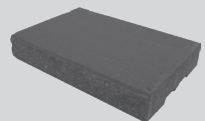
CORNERSTONE CORNER

300 x 200 x 200mm
12 x 8 x 8"



CAPSTONE

457 x 305 x 76mm
18 x 12 x 3"



CornerStone
Grey



Expocrete an Oldcastle® company

British Columbia Alberta Saskatchewan Manitoba

For more info visit: Belgard.com | Expocrete.com

Get Social



[Pinterest.com/Belgard](https://www.pinterest.com/Belgard)



[Facebook.com/BelgardHardscapes](https://www.facebook.com/BelgardHardscapes)



[Belgard.com/Blog](https://www.youtube.com/BelgardHardscapes)



[YouTube.com/BelgardHardscapes](https://www.youtube.com/BelgardHardscapes)



[Belgard.com/Enews](https://www.twitter.com/Belgard)



[Twitter.com/Belgard](https://www.twitter.com/Belgard)