

ACCESSORIES

Adjustable Riser 14" - 24" and 8" - 13"

The adjustable extension risers come in black or bronze and are available in two sizes, small and large. Each riser has a male half-inch NPT thread at the

bottom and a female half-inch NPT thread at the top. The small version adjusts from 8 inches up to 13 inches, while the large starts at 14 inches and extends up to 24 inches.

A locking collar lets you set either riser to the exact height you need. These can be combined with the tee fitting and 90° fitting to create a double-headed path light.



BD-A-RISER-M-BK
BD-A-RISER-M-BR



BD-A-RISER-S-BK
BD-A-RISER-S-BZ

Black Diamond Deck Mount

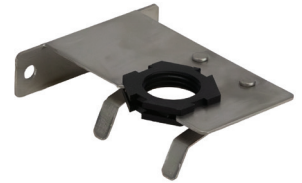
The deck mount is a flange with a female half-inch NPT thread and three holes for bolt or screw mounting into a surface. Fixtures with a half-inch NPT thread can be installed by threading them into the flange, with the wiring exiting from either the back or the side. It's designed for both deck and wall-mount applications and is available in black or bronze.



BD-DECK-MOUNT-BK
BD-DECK-MOUNT-BZ

Versa Beam Gutter Mount

The gutter mount is made of stainless steel with a black locknut that releases from the mount so a fixture can be attached, then snaps back into place. It comes with stainless steel screws for fastening it securely to the gutter.



VB-GUTTER-MOUNT-BK

90° L Sweep Adapter

The 90° fitting comes in both black and bronze and features a male half-inch NPT thread on one side and a female half-inch NPT thread with an Allen screw locking mechanism on the

other to secure a fixture. It can be paired with the deck mount to create a sconce, and when used alongside two 90° fittings, a tee fitting, extension risers, and directional downlights, it can form a double-headed path light.



VB-90-SWEEP-BK
VB-90-SWEEP-BZ

Tee Adapter

The tee fitting comes in black or bronze and features a male half-inch NPT thread in the center, with half-inch NPT female threads on both sides, each equipped with an Allen

screw locking mechanism. It's useful when two fixtures are needed to create an up-and-down lighting effect, and it can also be paired with the deck mount and the Versa Beam bubble rod to create a sconce.



VB-S-TEE-BK
VB-S-TEE-BZ