

# **MD MOUNT KIT**

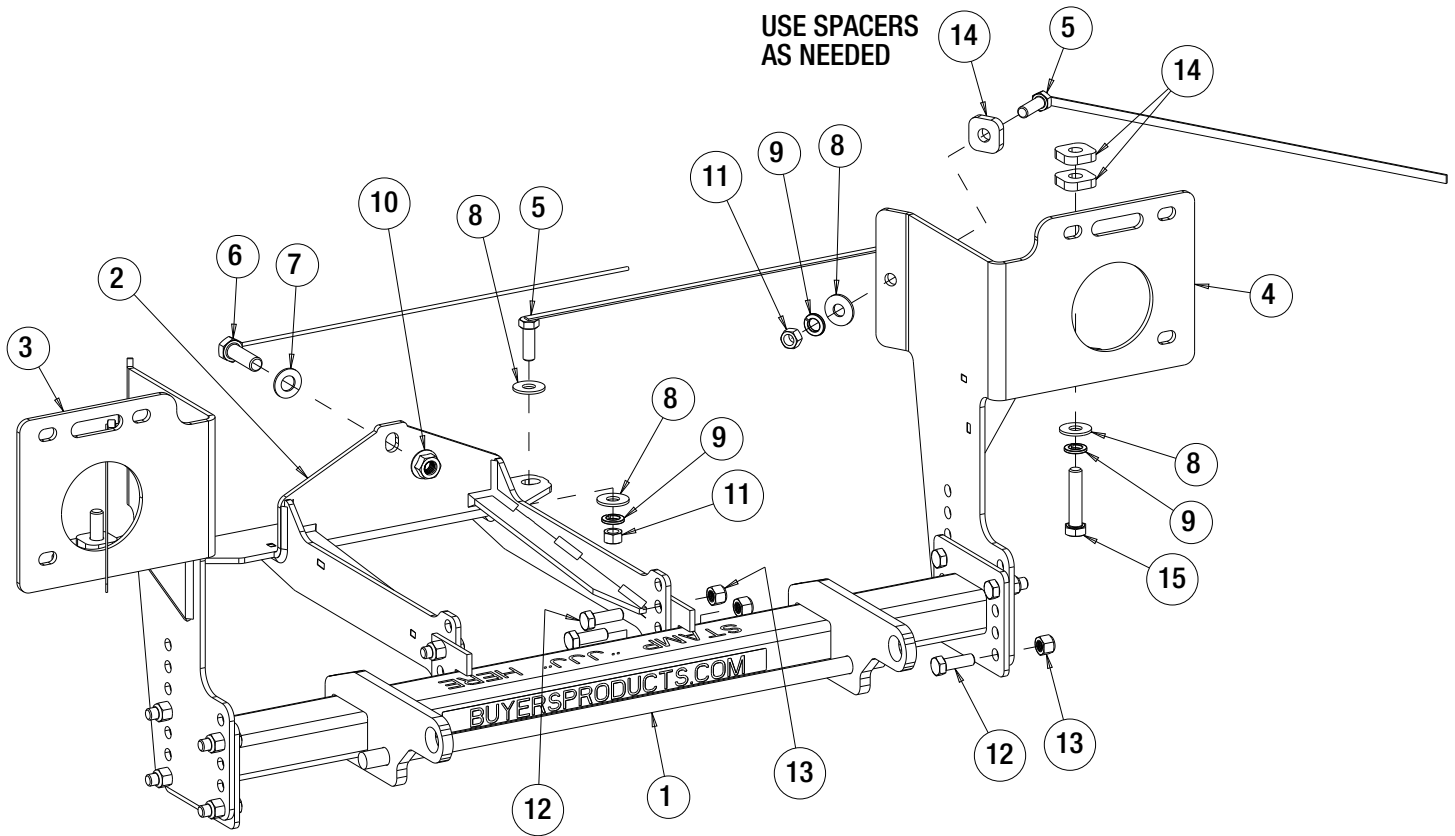
## **16063155A**

DODGE RAM 1500 '19+



# **SnowDogg® Snowplow**

## **TRUCK MOUNT INSTALLATION MANUAL**



USE SPACERS  
AS NEEDED

## Bill of Materials

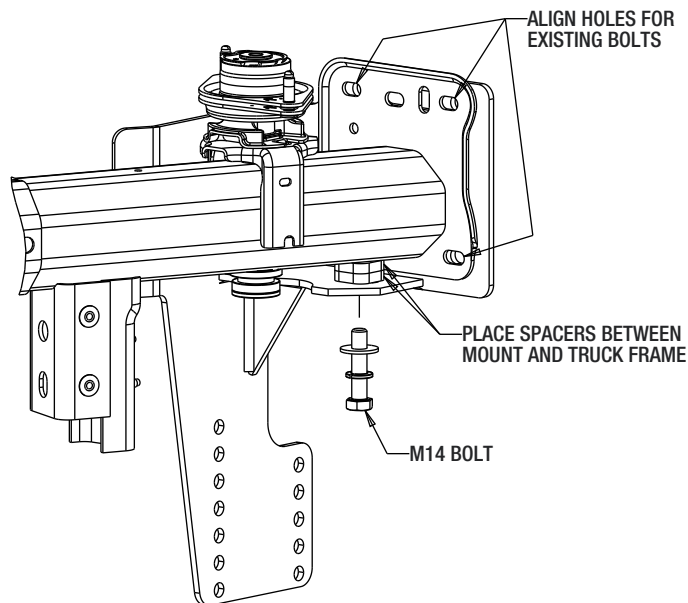
ITEM	PART NO.	QTY.	DESCRIPTION
1	16063158	1	PUSH BAR, 19 RAM 1500
2	16063159A	1	CTR BRACKET, 19 RAM 1500
3	16063156A	1	SIDEPLATE, 19 RAM 1500, PS
4	16063157A	1	SIDEPLATE, 19 RAM 1500, DS
5	16801004	4	SCREW, HEX HD, 1/2-13x1-1/2 GR 5 W/ HDL
6	16801006	1	SCREW, HEX HD, 5/8-11x2 GR 5 W/HDL
7	FWF063131095	1	WASHER, 5/8 SAE FLAT ZN
8	FWF050138014	8	WASHER, FLAT, 1/2" USS, ZN

ITEM	PART NO.	QTY.	DESCRIPTION
9	FWL050088013	6	WASHER, LOCK - 1/2 SPLIT ZN
10	3038931	1	NUT, HEX, SERR, FLGE, 5/8-11, G8, ZN
11	3006201	4	NUT, 1/2-13 HEX GR. 8 ZP
12	3006202	12	SCREW, HEX HD - 1/2-13 X 1-1/2 GR 8 ZC
13	3002397	12	LOCKNUT, HEX NYLOCK, 1/2-13 ZN, G8
14	3040411	6	SPACER, RAM 1500, 19+
15	3033912	2	SCREW, HHC, M14X2 X 50, CL10.9, YEL PLTD

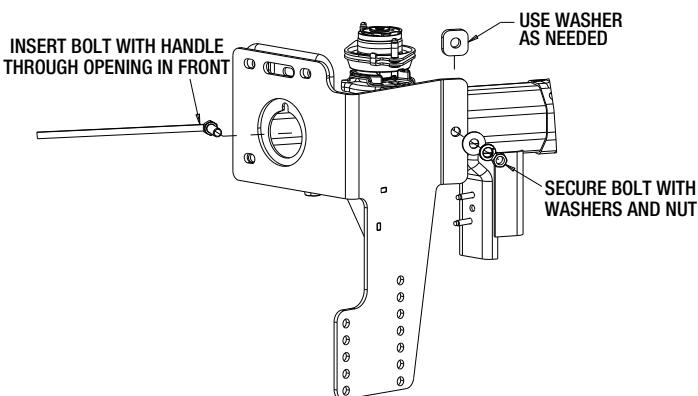
**BEFORE YOU BEGIN:**

*While leveling kits are recommended for 1/2T trucks - a leveling kit is REQUIRED for installation on 2025+ models in order to achieve proper mounting height. Verify that you received all of the parts listed in the bill of materials.*

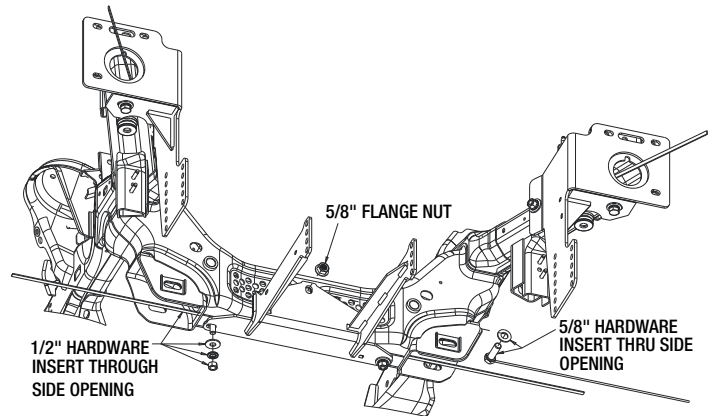
1. Remove the front bumper and bumper fasteners. Do not discard the fasteners as they will be needed during bumper reinstallation.
2. Remove the tow hooks and motorized air dam from underneath the bumper. These will NOT be reinstalled for plowing purposes.
3. Hold the PS sideplate (3) against the PS frame of the truck, aligning it to the three front holes on the truck's front flange. The existing bumper hardware will go through these holes during bumper reinstallation. Secure the bottom of the bracket with one M14 bolt (15), one 1/2" washer (8), one 1/2" lock washer (9) and two spacers (14). The spacers are placed between the truck frame and the mount bracket. Do not tighten the fasteners at this time.



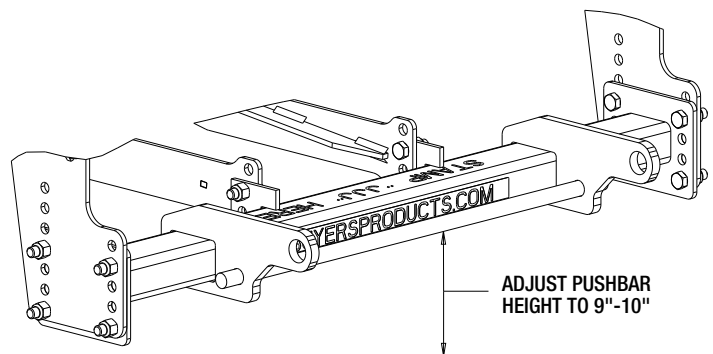
4. Using the mount as a guide, drill an additional hole through the side of the truck frame making sure that the holes on the front of the mount stay aligned with the holes on the truck's frame. Secure the mount to the side of the frame using one 1/2" bolt with handle (5), one 1/2" flat washer (8), one 1/2" lock washer (9) and one 1/2" nut (11). If necessary, add one spacer (14) between the outside of the truck frame and the mount. Do not tighten the fasteners at this time.






5. Repeat steps 3 and 4 to install the DS sideplate (4).
6. Secure the center bracket (2) to the truck frame using two 1/2" bolts with handles (5), two 1/2" flat washers (8), two 1/2" lock washers (9) and two 1/2" nuts (11). Install the 5/8" bolt with handle (6) along with the 5/8" flat washer (7) in the upper center hole from the inside of the truck frame and secure to the mount using the 5/8" flange nut (10).



7. Install the pushbar (1) between the two sideplates using eight 1/2" bolts (12) and eight 1/2" lock nuts (13). Fasten the rear pushbar brackets to the center bracket using four 1/2" bolts (12) and four 1/2" lock nuts (13). The center line of the 3/4" round bar should be approximately 9" to 10" from level ground. For best performance, the A-frame should be parallel to the ground when the plow is mounted on the vehicle.



8. Reinstall the bumper using the existing hardware.
9. Torque all fasteners as shown in the chart. Check and re-torque all fasteners after 5 hours of usage to ensure safe plow operation. Ensure all coolant lines and wires are clear from moving or hot components.

<b>Recommended Fastener Torque Chart (ft.-lb.)</b>			
Size	 SAE Grade 2	 SAE Grade 5	 SAE Grade 8
1/4-20	6	9	13
5/16-18	11	18	28
3/8-16	19	31	46
3/8-24	24	46	68
7/16-14	30	50	75
1/2-13	45	75	115
9/16-12	66	110	165
5/8-11	93	150	225
3/4-10	150	250	370
7/8-9	150	378	591
1-8	220	583	893
<b>Metric Grade 8.8 (ft.-lb.)</b>			
Size	Torque	Size	Torque
M6	7	M12	60
M8	17	M14	95
M10	35	M16	155
These torque values apply to fasteners except those noted in the instruction.			

### WARNING

- DO NOT under any circumstances disable, remove or relocate any sensors or components related to the operation of the air bags.
- Always follow the vehicle manufacturers' recommendations relating to snowplow installation.
- To comply with Federal Regulations and to assure a safe vehicle, the Front Gross Axle Weight Rating (FGAWR), Rear Gross Axle Weight Rating (RGAWR), and the Gross Vehicle Weight Rating (GAWR) must not be exceeded at any time.
- Due to the variety of equipment that can be installed on this vehicle, it is necessary to verify that the Front Gross Axle Weight Rating (FGAWR), Rear Gross Axle Weight Rating (RGAWR), and the Gross Vehicle Weight Rating (GAWR) are not exceeded at any time. This may require weighing the vehicle and adding ballast as necessary. It may also limit payload capacity of the vehicle. It is the operator's responsibility to verify that these ratings are not exceeded.

### CAUTION

- Read all instructions prior to assembly
- It is critical that all fasteners be properly torqued for safe plow operation – see chart above.
- Fasteners should be retorqued after 5-8 hours of plow use

### FULL TWO-YEAR WARRANTY

Manufacturer will repair, or at manufacturer's discretion will replace any part of this snowplow which proves to be defective in workmanship or material under normal use for a period of one year from the date of delivery to the original purchaser. Any cost incurred in returning the product to the supplier is the responsibility of the consumer.

### EXCLUSIONS

Manufacturer shall not be liable for special, incidental, or consequential damages, or for damages resulting from lack of necessary maintenance, from misuse, abuse, acts of God, or alteration of the product. Some states do not allow the exclusion or limitation of incidental or consequential damages, so the above limitation or exclusion may not apply to you.