

# CASTOHN®



WEST REGION

## STEP COLLECTION



# CASTOHN®

For additional product information, please visit [castohn.com](http://castohn.com)

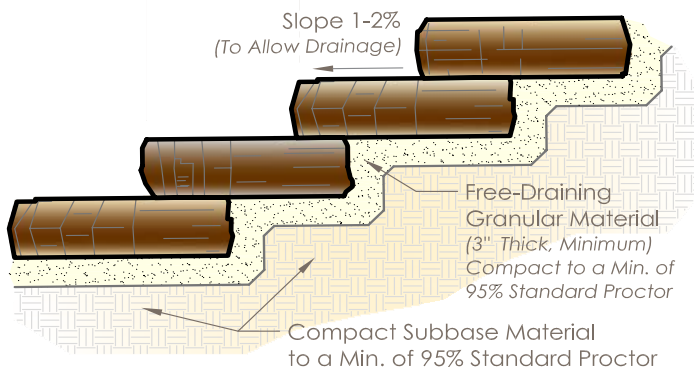


### Features

- Stone-like shapes and textures create inviting walkways
- Consistent 7" rise = fast installation and safe end result
- Quality materials = long term durability
- Natural appearance due to slight color variations
- Complimentary products = creative possibilities



Tread Width Varies  
(12" or More is Desirable)



### Irregular Steps

- 6 steps per pallet w/12 unique faces
- Palletized w/blended pieces
- 2,980 lbs. per pallet

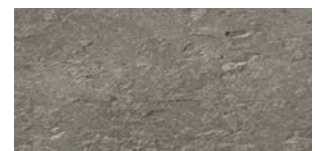


### Dimensional Steps

- Palletized w/one size per pallet



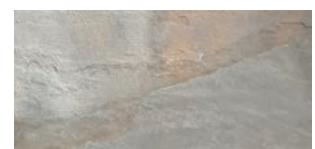
### Available Colors\* - West Region



Silver Legacy



Western Buff



Pacific Mist

\*colors may vary,  
see actual pallets

