

# CASTOHN<sup>®</sup>

hand made stone

## Natural Steps

Natural Steps sweeten your home's surroundings with subtle and natural color and texture.

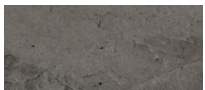
- Simple installation process for fast project completion
- Consistent 6-inch rise
- Packaged 6 steps per pallet, random assortment of sizes and textures

Color: Charcoal

### Available Colors:



Natural Gray



Charcoal

### Made to Order:



Silver Legacy

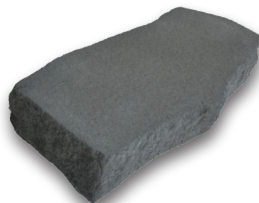
\*colors may vary,  
see actual pallets

### Product Data

- 6 steps per pallet with 12 unique faces
- Palletized with blended pieces
- 2,500 pounds per pallet



6" Rise - 425 pounds  
45" x 21" x 6"



6" Rise - 360 pounds  
43" x 21" x 6"



6" Rise - 420 pounds  
43" x 23" x 6"



6" Rise - 440 pounds  
45" x 22" x 6"



6" Rise - 395 pounds  
41" x 23" x 6"



6" Rise - 370 pounds  
43" x 22" x 6"

(Dimensions: L x W x H)