

TRIBUTE SPLITFACE

Tribute® Splitface Wall Systems features solid blocks with multiple pin grooves on the top surface that allow a combination of retaining and freestanding wall options.



Tribute Splitface Retaining Wall System in Graphite, Wetcast Column and Rectangle Caps in Reflection

Colors

Colors shown may vary from actual hues.

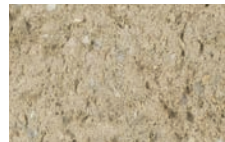
SOLID



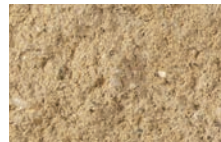
VISION



GRAY*



BUFF

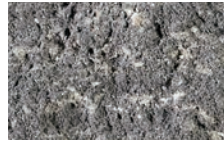


OCTOBER OAK

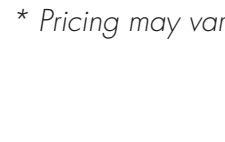
BLENDED



SILVERTONE*



GRAPHITE*



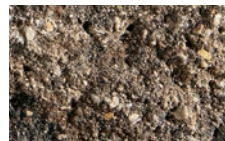
TIMELESS



SWISS MOCHA*

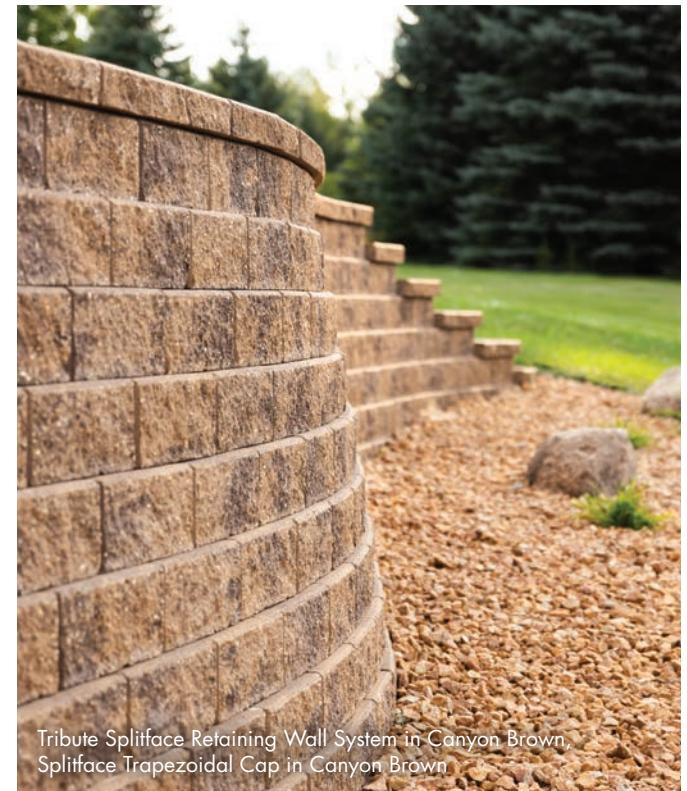


CANYON BROWN*



* Pricing may vary regionally.

DISCOVER
more about this product



Tribute Splitface Retaining Wall System in Canyon Brown Splitface Trapezoidal Cap in Canyon Brown

The color photos shown in this catalog were prepared with careful attention to accuracy. However, colors shown may vary from actual hues and should only be used as a guide. Refer to actual product samples for final color selection. Because concrete units are manufactured with high quality, naturally-mined aggregates and materials, variations in color or shading should be expected in products that are manufactured at different times and in units having different shapes. This color or shading variation is acceptable in the industry.



Tribute Splitface Retaining Wall System in Canyon Brown, Splitface Trapezoidal Cap in Canyon Brown, Passageways Step Units in Beckon



Tribute Splitface Retaining Wall System in Canyon Brown, Splitface Trapezoidal Cap in Canyon Brown

Sizes and Dimensions

Full Unit
(Front finish)
12 x 16 IN
6 HEIGHT

Corner
(Front and corner finish)
8 x 12 IN
6 HEIGHT

Compatible Caps
on page 100

