

CYZMIC[®] CS

CONTROLLED RELEASE INSECTICIDE

CSI
CONTROL
SOLUTIONS
 Incorporated
 A Makhteshim-Agan Company

CYZMIC CS is a micro-encapsulated suspension containing Lambda-Cyhalothrin and the innovative CapVantage™ technology. The broad use label includes applications for structural and perimeter pest control (including food handling), animal housing, turfgrass and ornamentals.

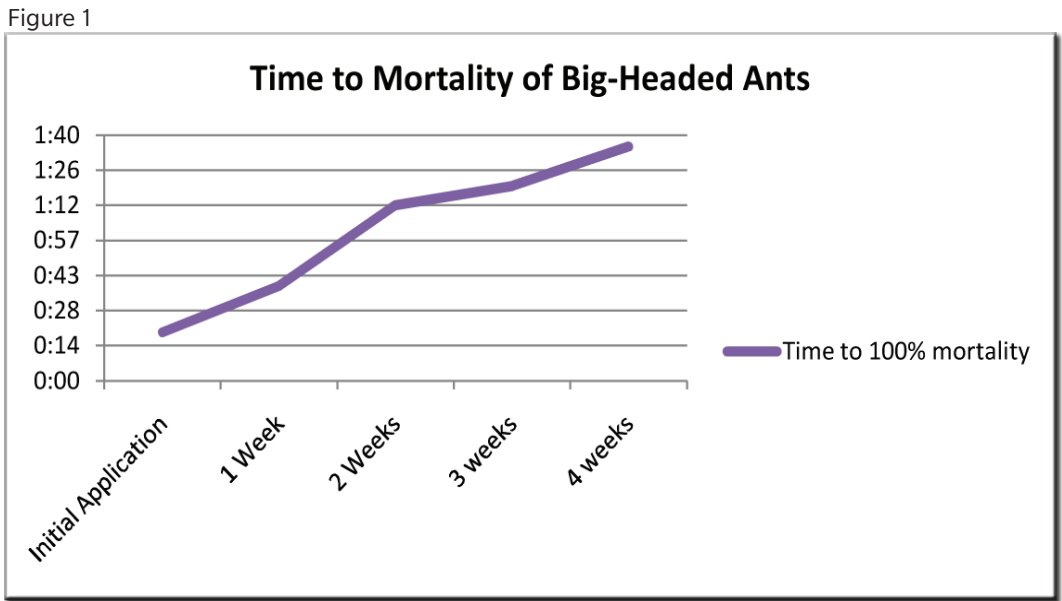
- Slow release micro-encapsulated formula
- Structural and perimeter pest control, food handling, turf and ornamental and animal housing applications
- Low odor and quick knockdown with long lasting residual
- Multiple treatment sites and target pests
- Easy measuring
- Can be re-applied at 21-day intervals (for indoor applications)
- Packs a punch with 11,500 capsules per sq. in.



Formulation	Lambda-Cyhalothrin with enhanced capsulated suspension formulation	Insects Controlled
Active Ingredient	9.7% Lambda-Cyhalothrin	Ants
Competitive Brand	Syngenta Demand [®] CS	Bedbugs
Packaging	12 x 8 ounce bottles/case (150 cases/pallet)	Cockroaches
	6 x 1 quart bottles/case (80 cases/pallet)	Fleas
Application Rate	See label for specific uses and rates	Mosquitoes
Mode of Action	A non-repellent insecticide allowing pests to come into direct contact with the active ingredient, Lambda-Cyhalothrin, and carry it back to nest	Silverfish
		Spiders
Signal Word	Caution	Stink Bugs

CapVantage™ Technology: Long Lasting - Controlled Release Insecticide

In a four-week study conducted by the University of Florida, CYZMIC CS showed extremely fast knockdown upon initial application by achieving 100% mortality of all ants within twenty minutes. After four weeks of being exposed to light and heat, CYZMIC CS still had 100% mortality in under two hours. Shown in Figure 1.



CYZMIC[®] CS vs. DEMAND[®] CS

Figures 2A and 2B show magnified views of the capsules in CYZMIC CS compared to DEMAND CS. The CapVantage™ technology in CYZMIC CS creates a more evenly dispersed active ingredient, which leads to smoother flow through spray equipment.

Figure 2A: CYZMIC CS

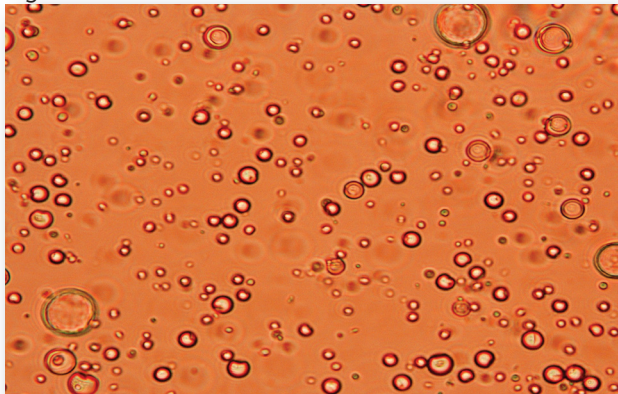


Figure 2B: DEMAND CS

