

LAWN SPRINKLING PUMPS

FW1298
0920
Supersedes
0619

SP SELF PRIMING LAWN SPRINKLING / IRRIGATION PUMPS

- Quick self-priming operation for lawn irrigation
- Flint & Walling's Service Plus motor featuring capacitor start and sealed ball bearings for continuous operation.
- Heavy-duty cast-iron construction
- 115/230 Dual voltage motor
- Easy access drain plug
- 2 in. suction pipe / 1-1/2 in. discharge pipe



SP SERIES

1, 1-1/2 and 2 HP

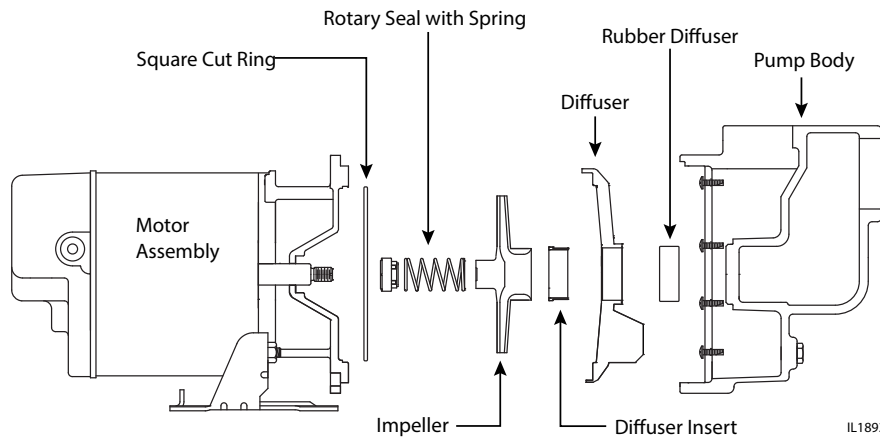
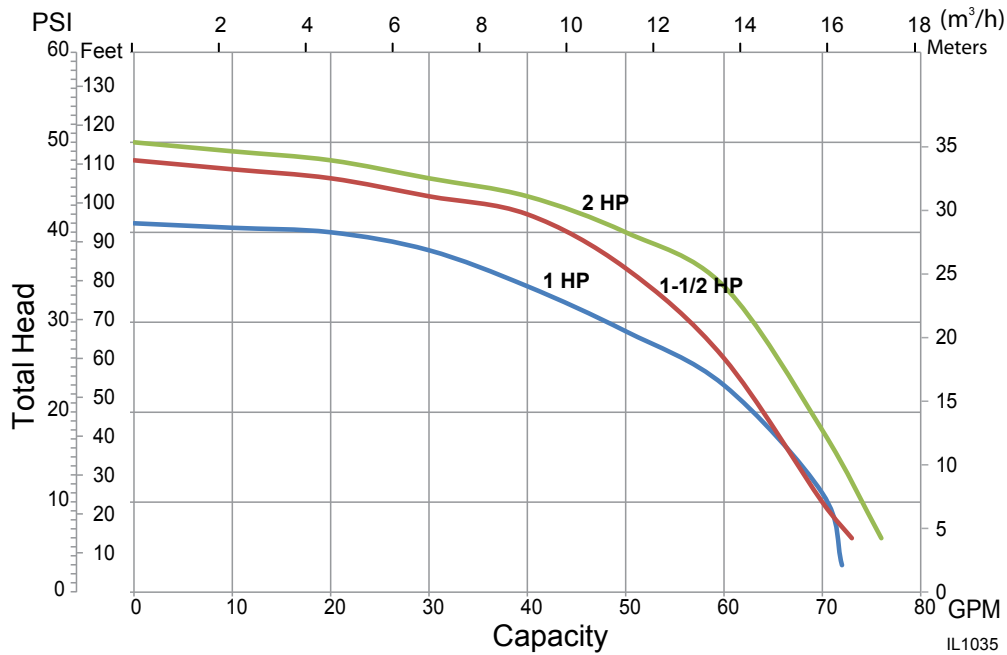


Lawn Sprinkling Pumps

PERFORMANCE CHART

| Model # | HP | Suction Lift (Ft.) | Discharge Pressure (PSI) | | | | | | | Shut Off Pressure @ 0 Lift (PSI) | Suction Pipe | Discharge Pipe |
|---------|-------|--------------------|--------------------------|----|----|----|----|----|----|----------------------------------|--------------|----------------|
| | | | 15 | 20 | 25 | 30 | 35 | 40 | 45 | | | |
| SP10P1 | 1 | 5 | 65 | 61 | 53 | 44 | 32 | | | 39 | 2 in. | 1-1/2 in. |
| | | 10 | 64 | 58 | 49 | 39 | 24 | | | | | |
| | | 15 | 62 | 55 | 45 | 34 | | | | | | |
| | | 20 | 59 | 51 | 41 | 28 | | | | | | |
| | | 25 | 56 | 46 | 36 | 2 | | | | | | |
| SP15P1 | 1-1/2 | 5 | 66 | 63 | 59 | 54 | 48 | 40 | 8 | 45 | 2 in. | 1-1/2 in. |
| | | 10 | 64 | 61 | 57 | 52 | 45 | 28 | | | | |
| | | 15 | 63 | 60 | 55 | 49 | 41 | 15 | | | | |
| | | 20 | 62 | 58 | 53 | 46 | 32 | | | | | |
| | | 25 | 60 | 56 | 50 | 42 | 21 | | | | | |
| SP20P1 | 2 | 5 | 70 | 68 | 65 | 62 | 56 | 46 | 24 | 48 | 2 in. | 1-1/2 in. |
| | | 10 | 69 | 66 | 63 | 60 | 52 | 39 | 6 | | | |
| | | 15 | 68 | 65 | 62 | 57 | 47 | 27 | | | | |
| | | 20 | 67 | 64 | 60 | 53 | 41 | 13 | | | | |
| | | 25 | 65 | 62 | 58 | 48 | 30 | | | | | |

Max. Case Pressure: 100 PSI



IL1893

