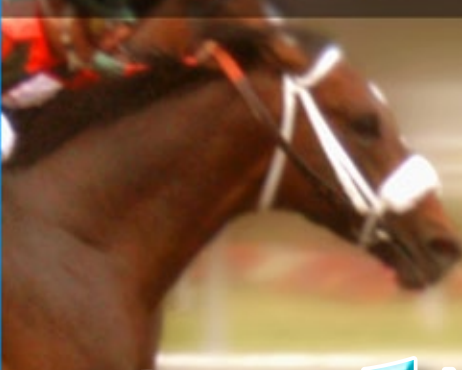


Equestrian Events

Unpaved Roadways

Mining & Construction

Motor Sports Circuits



GelTrak™

DS-09 Roadway Dust Suppressant

GelTrak is an environmentally responsible dust suppressant formulated using a proprietary blend of hygroscopic and humectant components combined with plant based binders. GelTrak retards dusting by keeping soils nominally moist for extended periods between watering or rainfall, while adhering dust fines to larger particles. GelTrak significantly reduces the total amount of water required to control dust.

GelTrak utilizes sub-surface moisture and relative humidity to help maintain nominal surface dampness, reducing watering requirements up to 50% or more. Dilution rates and application volumes may be varied to compensate for local conditions as well as the degree and term of required dust control. GelTrak is biodegradable. Each application remains effective for up to 3 months depending on rainfall and traffic. Results are amplified with each subsequent application.

- Unpaved Roads, Tracks & Sports Infields
- Mining, Construction & Demolition Sites
- Horse Tracks, Rodeo Arenas & Stock Yards
- Parking Lots, Fairgrounds & Camp Sites

- 5 Gallons (18.92 Liters)
- 30 Gallons (113.56 Liters)
- 55 Gallons (208.20 Liters)
- 275 Gallons (1,041 Liters)

Manufactured by Ecologel Solutions, LLC • Ocala, Florida 34480 (888) 545-6307

Application: Surfaces to be treated should be damp to wet (without standing water) prior to applying GelTrak. For best results on compacted soils grade, rake or harrow surface to a depth of approximately 1 inch prior to application.

Single Application Rate: Dilute GelTrak with water at a rate of 25 to 1, water to GelTrak. Apply diluted material evenly by watering truck over the surface to be treated at a rate of 55 gallons per 1,000 square feet (2.25 Liters per square meter). Dilution rates and application volumes are adjustable according to the required depth of treatment, term of effectiveness and degree of dust mitigation. Repeat treatment as needed.

Two Application Rate: First Application- Dilute GelTrak with water at a rate of 50 to 1, water to GelTrak. Apply diluted material at a rate of 55 gallons per 1,000 square feet (2.25 liters per square meter). Apply the second application in the next required watering at the same dilution and application rate.

Re-Water Treated areas when necessary for proper dust control, extending the time between watering to maximize water savings. If dusting is not reduced significantly or if required watering becomes more frequent, small amounts of GelTrak may be added during regular waterings to further extend the time between watering and enhance the effectiveness. Reapply as needed.

Limited Warranty: Ecologel Solutions, LLC warrants that when used in accordance with label directions this product is reasonably fit for its intended purpose. There are no warranties express or implied, concerning this product. Ecologel Solutions, LLC's liability is limited to, at the Company's sole discretion, refunding of the purchase price paid by buyer or replacement of the product used.

