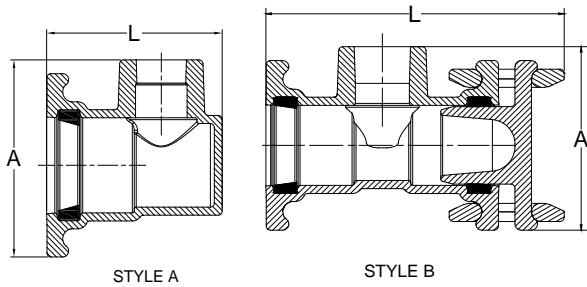


# HARCO DUCTILE IRON IPS GASKETED FITTINGS

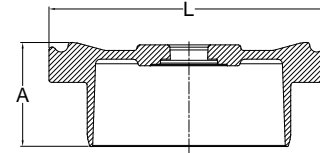
## DESIGN DATA

### SIDE OUTLET TAPPED CAP



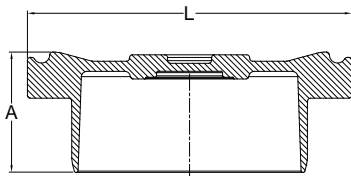
SIZE	PART #	A	L	STYLE	WT (approx)
2 x 1½	80168	5.6	9.1	B	10.4
2½ x 1½	80268	6.1	5.6	A	6.3

### TAPPED PLUG (Female NPT)



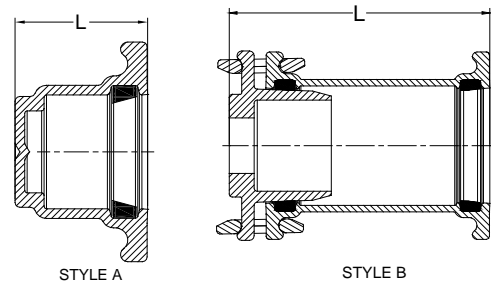
SIZE	PART #	A	L	MAX TAP	WT (approx)
2	80156xx	2.8	5.2	1 1/2	3.0
2½	80256xx	3.3	5.7	2	4
3	80356xx	3.8	6.6	2 1/2	5.1
4	80456xx	4.1	6.7	3	8.6
6	80656xx	4.0	9.9	3	15
8	80856xx	4.3	12.1	3	20.4
10	81056xx	5.5	14.8	3	31.1
12	81256xx	5.7	17.0	3	46.4

### PLUG



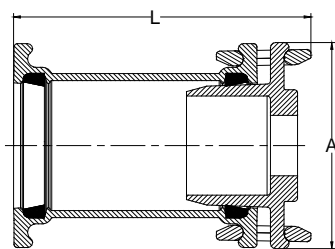
SIZE	PART #	A	L	WT (approx)
2	80155	2.8	5.2	3.0
2½	80255	3.0	5.6	4.0
3	80355	3.3	6.8	4.2
4	80455	4.1	7.6	8.8
6	80655	3.6	9.6	12.3
8	80855	4.0	12.0	20.9
10	81055	5.5	14.8	31.1
12	81255	5.7	17.0	45.4
16	81655	5.5	23.3	95.5

### CAP



SIZE	PART #	L	STYLE	WT (approx)
1½	80066	4.9	A	4
2	80166	5.0	B	8
2½	80266	3.4	A	4
3	80366	4.4	B	17
4	80466	4.2	B	25
6	80666	4.7	B	40
8	80866	5.3	B	55
10	81066	6.0	B	97
12	81266	6.3	B	127
14	81466MJ		A	66
16	81666		A	92

### TAPPED CAP



SIZE	PART #	A	L	WT (approx)
2	80167xx	5.2	5.0	3
2½	80267xx	5.7	3.5	4
3	80367xx	6.5	4.0	6
4	80467xx	7.6	4.2	8
6	80667xx	9.9	13.3	25
8	80867xx	12.1	15.0	56
10	81067xx	14.8	19.3	64
12	81267xx	17.0	19.3	78

#### Notes:

- All lay lengths & weights are approximate and subject to change without notice
- Fabricated fitting configurations may vary

Call For Other Sizes, Configurations & Gasket Materials

#### Bell & Spigot Specification Note:

- 1½" – 12": Bells and Spigots are IPS size
- 14" – 18": Bells and Spigots are Ductile Iron Pipe Size (DIPS) for AWWA C905 PVC Pipe or Ductile Iron Pipe



### THE HARRINGTON CORPORATION

P.O. BOX 10335 • LYNCHBURG, VIRGINIA 24506 • 3721 COHEN PLACE • LYNCHBURG, VIRGINIA 24501  
 PHONE: (434) 845-7094 • FAX: (434) 845-8562 • E-MAIL: sales@harcofittings.com • WEB: www.harcofittings.com

D120180411