



Rain Bird 1804 SAM PRS Spray Body

4" Pop-up Spray Head with Seal-A-Matic and Pressure Regulated Stem

Operating Range

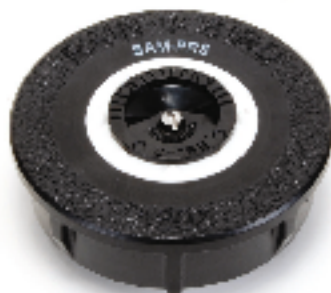
- Spacing: 2.5 to 24 feet (0.8 to 7.3 m)
- Pressure: 25 to 70 psi (1.7 to 4.8 bar)

Specifications

- SAM capability: holds up to 14 feet (4.2 m) of head at 6 psi (0.3 bar)
- Flow-by: 0 at 8 psi (0.6 bar) or greater; 0.1 gpm (0.02 m³/h; 0.006 l/s) otherwise
- Installation: bottom inlet only
- Regulates nozzle pressure to an average 30 psi (2.1 bar) with inlet pressures of up to 70 psi (4.8 bar)

Dimensions

- 1/2" (15/21) NPT female threaded inlets
- Models and height:
1804 SAM-PRS: 6" (15 cm) body height;
4" pop-up height (10 cm)
- Exposed diameter: 2 1/4" (5.7 cm)



www.rainbird.com