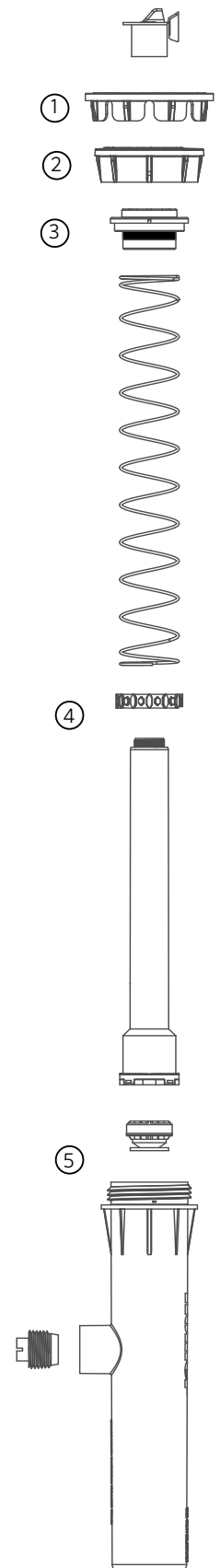


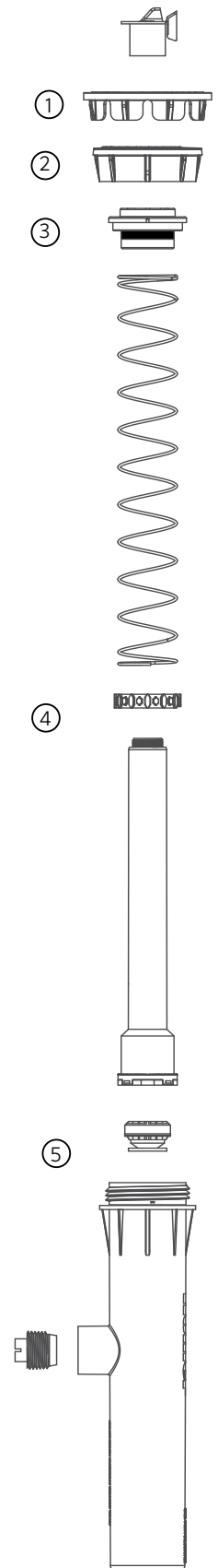
PROS-02, 03, 04, 06, 12: PRO-SPRAY® SPRINKLER

ITEM	DESCRIPTION	CATALOG NO.	
1	Snap-On Reclaimed Cap Purple	PROSRCCAPSP	
		Standard (Black)	458500SP
		With Check Valve ID (Black)	458505
2	Body Cap	Reclaimed Body Cap (Purple)	458520SP
		Reclaimed with Check Valve ID (Purple)	458525
		Pro-Spray Shutoff Cap	213600SP
3	Riser Seal	472300SP	
4	Ratchet Ring	629300	
5	Check Valve Assembly	437400SP	



PRS30-04, 06, 12: PRO-SPRAY PRESSURE-REGULATED SPRAY BODIES

ITEM	DESCRIPTION	CATALOG NO.
1	Snap-On Reclaimed Cap Purple	PROSRCCAPSP
	Standard (Brown)	458551
	With Check Valve ID (Brown)	458554
2	Body Cap	
	Reclaimed Body Cap with Check Valve ID (Purple)	458560
	Pro-Spray Shutoff Cap	213600SP
3	Riser Seal	472300SP
4	Ratchet Ring	629300
5	Check Valve Assembly	437400SP



PRS40-04CV, 06CV, 12CV: PRO-SPRAY PRESSURE-REGULATED SPRAY BODIES

ITEM	DESCRIPTION	CATALOG NO.
1	Snap-On Reclaimed Cap Purple	PROSRCCAPSP
2	Body Cap	Standard (Gray) with Check Valve ID
		458556
		Reclaimed with Check Valve ID (Purple)
		458562
	Pro-Spray Shutoff Cap	213600SP
3	Riser Seal	472300SP
4	Ratchet Ring	629300
5	Check Valve Assembly	437400SP

