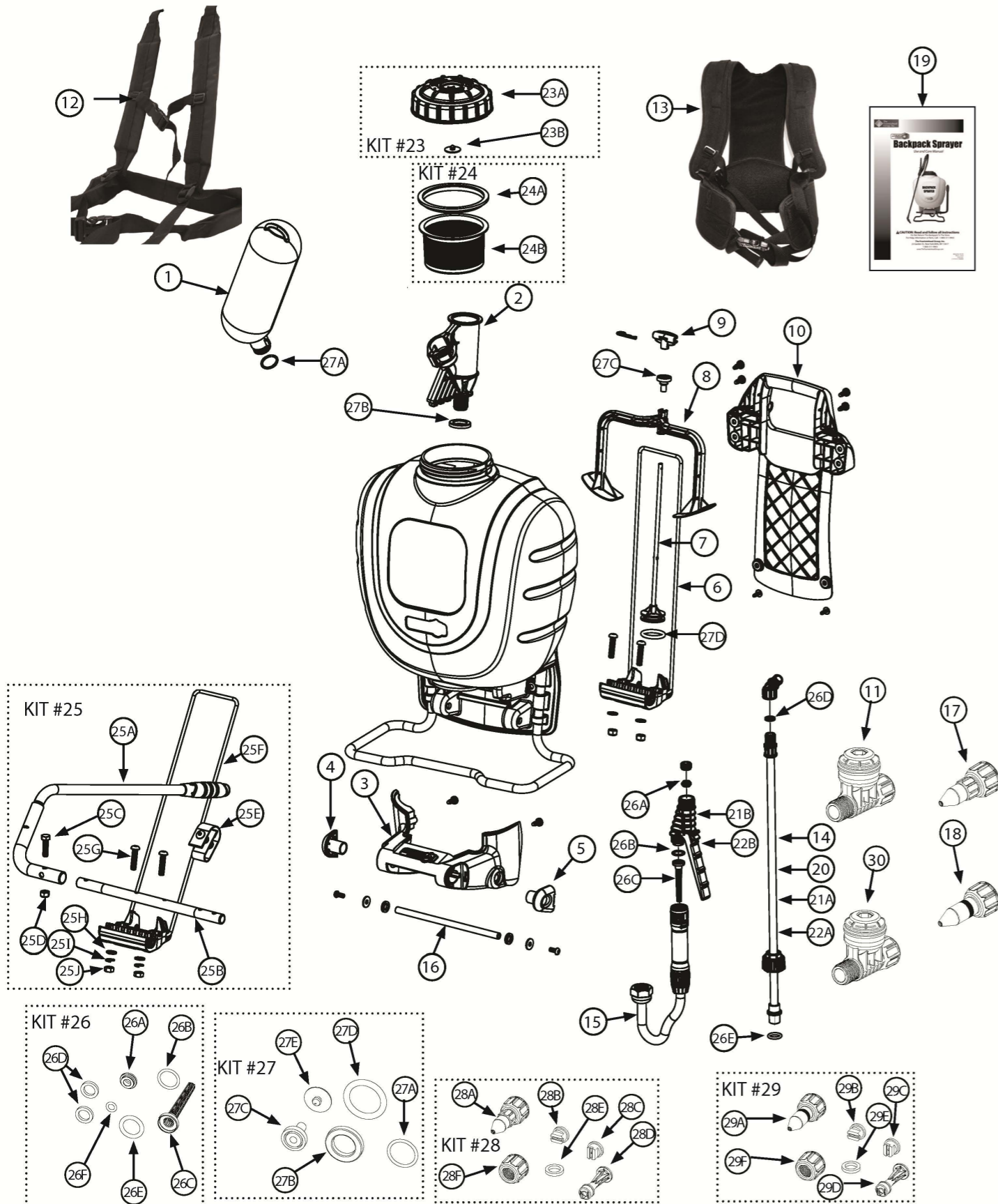


PART # 190344
LESCO INTERNAL PISTON BACKPACK
 by The Fountainhead Group
 800-311-9903



KITS, PARTS & ACCESSORIES



KEY#	PART#	DESCRIPTION
1	181775	HIGH CAPACITY RESERVOIR / CHAMBER
2	182070	PUMP
3	181635	DRIVE SUPPORT SHROUD
4	181653	LEFT BUSHING
5	181654	RIGHT BUSHING
6	181954	DRIVE LEVER ASSEMBLY
7	181669	PUMP PISTON ASSEMBLY
8	181665	STANDARD AGITATOR
9	181641	PIVOT CLIP
10	181648	BACK HANDLE
11	181826	PRESSURE REGULATOR (25 PSI)
12	181659	SHOULDER HARNESS (STANDARD)
13	181889	SHOULDER HARNESS (DELUXE)
14	181824	21" POLY WAND ASSEMBLY
15	181925	SHUT-OFF ASSEMBLY, SMITH PRO II (BACKPACK VER.)
16	181649	SHROUD ROD
17	181822	POLY ADJUSTABLE NOZZLE
18	181823	BRASS ADJUSTABLE NOZZLE
19	181702	MANUAL

KIT #20 182194 21" STAINLESS STEEL WAND CARDED KIT

20	182194	21" STAINLESS WAND ASSEMBLY
----	--------	-----------------------------

KIT #21 182366 21" STAINLESS STEEL WAND & SMITH PRO II SHUT-OFF CARDED KIT

21A	182112	21" STAINLESS WAND ASSEMBLY
21B	181941	SHUT-OFF ASSEMBLY, SMITH PRO II
21C	181822	POLY ADJUSTABLE NOZZLE
21D	181804	NOZZLE CAP NUT
21E	181812	FLAT NOZZLE SEAL
21F	180097	RED FLAT FAN NOZZLE (HIGH VOLUME)

KIT #22 181965 21" POLY WAND & SMITH PRO II SHUT-OFF CARDED KIT

22A	181824	21" POLY WAND ASSEMBLY
22B	181941	SHUT-OFF ASSEMBLY, SMITH PRO II
22C	181822	POLY ADJUSTABLE NOZZLE
22D	181804	NOZZLE CAP NUT
22E	181812	FLAT NOZZLE SEAL
22F	180097	RED FLAT FAN NOZZLE (HIGH VOLUME)

KIT #23 182062 CAP ASSEMBLY KIT

23A	181758	TANK CAP (GREEN)
23B	171015	CHECK VALVE

KIT #24 181564 FILTER BASKET ASSEMBLY KIT

24A	181445	FILTER BASKET GASKET
24B	181519	FILTER BASKET

KIT #25 181789 BOLT-ON PUMP HANDLE KIT (FOLDING)

25A	181923	FOLDING PUMP HANDLE ASSEMBLY (GRIP INCLUDED)
25B	181753	BOLT-ON DRIVE SHAFT
25C	181756	HEX BOLT
25D	181757	LOCK NUT
25E	181772	RETAINER STRAP
25F	181954	DRIVE LEVER ASSEMBLY
25G	182021	DRIVE LEVER SCREW, 40mm (2)
25H	181906	DRIVE LEVER FLAT WASHER (2)
25I	181908	DRIVE LEVER LOCK WASHER (2)
25J	181907	DRIVE LEVER NUT (2)
25K	181855	INSTRUCTION BOOKLET (NOT SHOWN)
25L	182006	INSTALLATION INSTRUCTION SHEET (NOT SHOWN)

KIT #26 181910 SMITH PRO II SHUT-OFF SERVICE KIT

26A	181840	POPPET SEAL
26B	181493	VALVE BODY O-RING
26C	181468	FILTER
26D	181812	FLAT NOZZLE SEAL (2)
26E	181810	WAND O-RING
26F	181805	ADJUSTABLE NOZZLE O-RING
26G	181973	INSTRUCTION BOOKLET (NOT SHOWN)

KIT #27 181909 BACKPACK SERVICE KIT

27A	171488V	RESERVOIR / CHAMBER O-RING, VITON
27B	171740	PUMP GASKET
27C	181668	TANK GROMMET
27D	171487V	PISTON O-RING, VITON
27E	171015	CHECK VALVE
27F	181974	INSTRUCTION BOOKLET (NOT SHOWN)

KIT #28 181869 POLY NOZZLE KIT

28A	181822	POLY ADJUSTABLE NOZZLE
28B	180168	YELLOW FLAT FAN NOZZLE (LOW VOLUME)
28C	180097	RED FLAT FAN NOZZLE (HIGH VOLUME)
28D	180266	FOAMING NOZZLE
28E	181812	FLAT NOZZLE SEAL
28F	181804	NOZZLE CAP NUT

KIT #29 181870 BRASS NOZZLE KIT

29A	181823	BRASS ADJUSTABLE NOZZLE
29B	180168	YELLOW FLAT FAN NOZZLE (LOW VOLUME)
29C	180097	RED FLAT FAN NOZZLE (HIGH VOLUME)
29D	180266	FOAMING NOZZLE
29E	181812	FLAT NOZZLE SEAL
29F	181804	NOZZLE CAP NUT

KIT #30 181825 14 PSI PRESSURE REGULATOR KIT

30	181825	14 PSI PRESSURE REGULATOR ASSEMBLY
----	--------	------------------------------------