

**EROSIONTECH**

# DIAMOND WATTLE

**Advanced Straw Wattle**



DiamondWattle

**A low cost, lightweight BMP option, now with Advanced Netting Options.**

Our weed-free wattles provide perimeter protection along contours or at the base of slopes, inlets, and roadways to reduce soil erosion, runoff and retain sediment.

As an advanced alternative to traditional, common Straw Wattles, MKB offers our DiamondWattle™. It is everything you like about a wattle (economical, lightweight, easy to handle), with none of the problems! The net won't tear, significantly outlasts traditional wattle netting, and keeps rodents out of your warehouse.

MKB also offers a 100% biodegradable DiamondWattle, made with all natural wood fiber netting.

## Benefits:

- Made with the same Advanced, premium netting as Compost Filter Sock
- Won't tear & outlasts traditional wattle netting
- Reduces dust & keeps rodents out
- 9" and 12" diameters
- 100% Biodegradable netting available



DiamondWattle  
(Natural +)

**MKB** Stormwater  
Innovation

888-578-0777  
mkbcompany.com

©2024 MKB Company. All Rights Reserved.

**Made in U.S.A.**

All statements, product characteristics, and performance data contained herein are believed to be reliable based on observation and testing, but no representations, guarantees, or warranties of any kind are made as to accuracy, suitability for particular applications, or the results to be obtained. Nothing contained herein is to be considered to be permission or a recommendation to use any proprietary process or technology without permission of the owner. No warranty of any kind, expressed or implied, is made or intended. DiamondWattle™ and ErosionTech™ are Trademarks of MKB Company. US Patents and Patents Pending may apply.

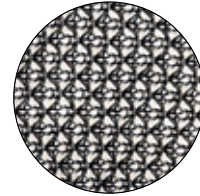


# DIAMOND WATTLE

Advanced Straw Wattle

## DiamondWattle Product Specs:

<b>Netting Material Type</b>	Diamond Sock® Standard Pallet Netting Multi-Filament Polypropylene (MFPP)
<b>Netting Degradation</b>	Photodegradable
<b>Netting Diameters</b>	9", 12"
<b>Netting Opening Size</b>	1/8"
<b>Netting Color</b>	Black
<b>Fabric Tensile Strength (ASTM D4595)<sup>1</sup></b>	561 lbs
<b>Fill Type</b>	Weed Free Agricultural Straw
<b>Functional Longevity<sup>2</sup></b>	1-2 years
<b>Staking Recommendation</b>	Every 5-ft (stakes not included)



Netting Sample



Fill Sample

<sup>1</sup>Tensile Strength is based on 12" diameter using ATSM D4595. See Filtrexx TechLink #3342 for full tensile strength testing.

<sup>2</sup>Functional longevity ranges are estimates only. Site specific environmental conditions may result in significantly shorter or longer time periods.

## Item List:

Item Number	Diameter	Total Linear Feet per pallet	Unit Length	Units per pallet	Unit Weight	Pallet Weight
SWD9-14-25	9-in	350-ft	25-ft	14	38 lb +/- 10%	~ 590 lbs
SWD9-24-10	9-in	240-ft	10-ft	24	16 lb +/- 10%	~ 485 lbs
SWD12-20-10	12-in	200-ft	10-ft	20	30 lb +/- 10%	~ 680 lbs
SWD12-10-20	12-in	200-ft	20-ft	10	60 lb +/- 10%	~ 680 lbs

## Shipping Specs:

<b>Pallets per TL</b>	up to 28
<b>Shipping Dimensions</b>	up to 48L x 48W x 108H (height varies by product type)
<b>Packaging</b>	48 x 48 Pallet; Wattles are strapped together, and pallet is stretch-wrapped
<b>Storage Life</b>	Under Roof - 6 months / Outdoors - 3 months

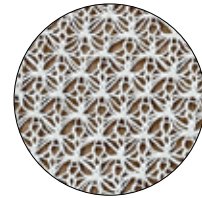


# DIAMOND WATTLE

Advanced Straw Wattle

## DiamondWattle Natural+ Product Specs:

<b>Netting Material Type</b>	Natural+ Netting All Natural Biodegradable Wood Fiber
<b>Netting Degradation</b>	Biodegradable
<b>Netting Diameters</b>	9", 12"
<b>Netting Opening Size</b>	3/8"
<b>Netting Color</b>	Off-white
<b>Fill Type</b>	Weed Free Agricultural Straw
<b>Functional Longevity<sup>1</sup></b>	Up to 18 months
<b>Staking Recommendation</b>	Every 5-ft (stakes not included)



Netting Sample



Fill Sample

<sup>1</sup>Functional longevity ranges are estimates only. Site specific environmental conditions may result in significantly shorter or longer time periods.

## Item List:

Item Number	Diameter	Total Linear Feet per pallet	Unit Length	Units per pallet	Unit Weight	Pallet Weight
SWW9-14-25	9-in	350-ft	25-ft	14	38 lb +/- 10%	~ 590 lbs
SWW9-24-10	9-in	240-ft	10-ft	24	16 lb +/- 10%	~ 485 lbs
SWW12-20-10	12-in	200-ft	10-ft	20	30 lb +/- 10%	~ 680 lbs
SWW12-10-20	12-in	200-ft	20-ft	10	60 lb +/- 10%	~ 680 lbs

## Shipping Specs:

<b>Pallets per TL</b>	up to 28
<b>Shipping Dimensions</b>	up to 48L x 48W x 108H (height varies by product type)
<b>Packaging</b>	48 x 48 Pallet; Wattles are strapped together, and pallet is stretch-wrapped
<b>Storage Life</b>	Storage not recommended for Biodegradable Wattles