



# Valve Boxes

## The Most Complete Product Offering

Now, consolidated into two product series to make finding what you need and ordering it easier than ever before.

1

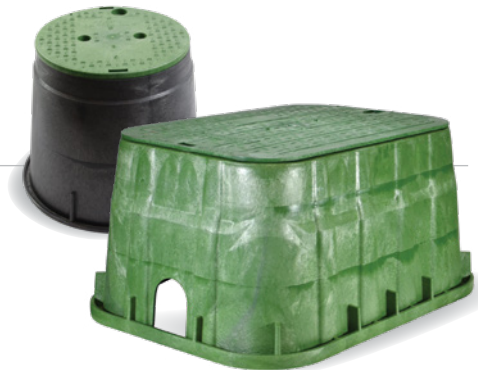
### NDS® Standard Series

Quality features at a good value

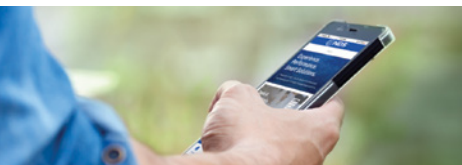
2

### NDS® Pro Spec Series

Commercial grade with enhanced features



|                     | 6" Round | 10" Round | 14" x 19" | 13" x 20" | 13" x 24" | 17" x 30" |
|---------------------|----------|-----------|-----------|-----------|-----------|-----------|
| NDS Standard Series | ✓        | ✓         | ✓         | ✓         |           |           |
| NDS Pro Spec Series |          | ✓         | ✓         | ✓         | ✓         | ✓         |



#### Download our Mobile App – Search for NDS Drainage

Take the powerful resources of the NDS site with you on the go!  
Access our product catalog, online calculators and planning tools.



[ndspro.com](https://www.ndspro.com)

# Why NDS® Valve Boxes?

NDS is The #1 Stocked  
Valve Box Brand at U.S. Distributors.

And NDS is the only brand you'll find everywhere.

**Biggest Portfolio of Products.**

NDS offers more sizes, more colors,  
more markings than anyone else.

**Performance & Durability.**

From installation to long-lasting quality – NDS manufacturers  
their valve boxes to exacting specifications.



Made in  
America



More Color  
Options



More Size  
Options



Fits Any  
Application



Available  
Nationwide

# Standard Series

## 6" Round Valve Box | 28 SKUs

|                    |   |
|--------------------|---|
| <b>Box Options</b> | Black, Green, Sand, Purple  |
| <b>Lid Options</b> | ICV (black/green/sand/brown), Water (green),<br>Sewer (green), Reclaimed (purple/black) |



## 10" Round Valve Box | 27 SKUs

|                    |   |
|--------------------|---|
| <b>Box Options</b> | Black, Green, Sand, Purple  |
| <b>Lid Options</b> | ICV (black/green/sand/brown), Water (black/green),<br>Sewer (green), Reclaimed (green/purple/black) |



## 14" x 19" | 29 SKUs

|                    |   |
|--------------------|---|
| <b>Box Options</b> | Black, Green, Sand, Purple, Extensions (8 SKUs)   |
| <b>Lid Options</b> | ICV (black/green/sand/brown), Water (black/green),<br>Sewer (green), Reclaimed (black/green/purple), Electric (green) |



## 13" x 20" | 21 SKUs

|                    |   |
|--------------------|---|
| <b>Box Options</b> | Black, Green, Sand, Purple, Extensions (8 SKUs)   |
| <b>Lid Options</b> | ICV (black/green/sand/brown), Water (black/green),<br>Sewer (green), Reclaimed (purple/black) |



# Pro Spec Series

## 10" Round Valve Box | 33 SKUs

|                    |   |
|--------------------|---|
| <b>Box Options</b> | Black, Green, Purple, Sand, Gray  |
| <b>Lid Options</b> | ICV (black/green/sand/brown), Water (black/green), Sewer (green), Reclaimed (green/purple/black), Electric (gray) |



## 14" x 19" | 34 SKUs

|                    |   |
|--------------------|---|
| <b>Box Options</b> | Black, Green, Sand, Gray, Purple  |
| <b>Lid Options</b> | ICV (black/green/sand/brown), Water (black/green), Sewer (green), Reclaimed (black/green/purple), Electric (gray/green) |



## 13" x 20" | 24 SKUs

|                    |  |
|--------------------|--|
| <b>Box Options</b> | Black, Green, Purple, Sand   |
| <b>Lid Options</b> | ICV (black/green/sand/brown), Water (black/green), Sewer (green), Reclaimed (purple/black) |



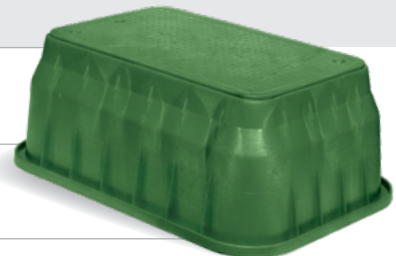
## 13" x 24" | 11 SKUs

|  |   |
|--|---|
| <b>Box: 15" &amp; 12" Tall Options</b> | Black, Green, Purple  |
| <b>Lid Options</b>                     | ICV (green), Water (green), Sewer (green), Reclaimed (purple) |



## 17" x 30" | 21 SKUs

|  |  |
|--|--|
| <b>Box: 15" &amp; 18" Tall Options</b> | Black, Green, Purple, Gray   |
| <b>Lid Options</b>                     | ICV (green), Water (black), Sewer (green), Reclaimed (purple), Electric (gray) |



Visit [ndspro.com](http://ndspro.com) for:



Videos



Tools/  
Calculators



Downloads



Case  
Studies



Design  
Worx



Request  
a Quote

### NDS Customer Service

851 N. Harvard Ave., Lindsay, CA 93247

Phone: 800.726.1994 • 559.562.9888

Fax: 800.726.1998 • 559.562.4488