

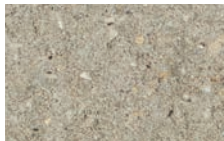
INTEGRITY

Integrity® Retaining Wall System is a practical solution for even challenging applications, including multi-level terraces and slope protection. The Integrity wall system is manufactured to ensure efficient installation, increased stability, and lasting durability.

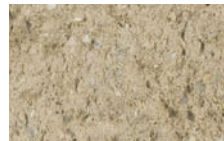
Colors

Colors shown may vary from actual hues.

SOLID



GRAY*



BUFF

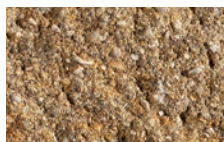
BLENDED



SILVERTONE*



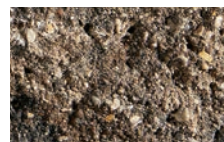
GRAPHITE



HUSH



CANYON BROWN



TIMELESS

DISCOVER
more about this product



* Pricing may vary regionally.



Integrity Retaining Wall System in Canyon Brown, Splitface Rectangle Cap in Canyon Brown, Elements Paving Stones (4x8) in Reflection

The color photos shown in this catalog were prepared with careful attention to accuracy. However, colors shown may vary from actual hues and should only be used as a guide. Refer to actual product samples for final color selection. Because concrete units are manufactured with high quality, naturally-mined aggregates and materials, variations in color or shading should be expected in products that are manufactured at different times and in units having different shapes. This color or shading variation is acceptable in the industry.



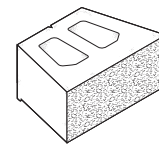
Integrity Retaining Wall System in Canyon Brown, Splitface Rectangle Cap in Canyon Brown, Elements Paving Stones (4x8) in Reflection



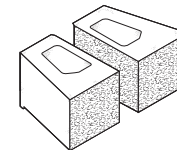
Integrity Retaining Wall System in Canyon Brown, Splitface Rectangle Caps in Canyon Brown, Elements Paving Stones (4x8) in Reflection, Crest Bullnose Pavers in Reflection

Sizes and Dimensions

Full Unit
(Front finish)
12 x 18 IN
8 HEIGHT



Corner
(Front and corner finish)
9 x 12 IN
8 HEIGHT



Compatible Caps
on page 100