



DIMENSIONAL STEPS



Learn More

HIGHFORMAT.COM
(877) 777-6558

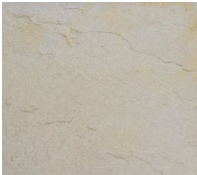
FEATURES

- Stone-like shapes and textures create inviting walkways
- Consistent rise equals fast installation and safe end result
- Quality materials and long term durability
- Multiple natural color blends available
- Complimentary products offer a variety of creative possibilities

MATERIAL WETCAST

COLOR OPTIONS

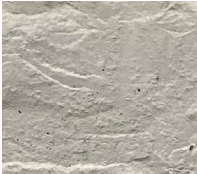
FOND DU LAC



SLATE GRAY



LIMESTONE



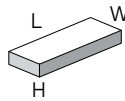
TERRAIN



Refer to our website for the most recent color offerings.

4' PALLET

Weight: 4,050± lbs (inc. pallet)
Pieces Per Pallet: 8



UNIT

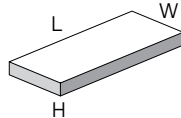
Dimensions: 48"L x 18"W x 7"H
Weight: 500± lbs

SNAPPED FACE



6' PALLET

Weight: 4,000± lbs (inc. pallet)
Pieces Per Pallet: 3



UNIT

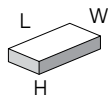
Dimensions: 72"L x 30"W x 7"H
Weight: 1,320± lbs

SNAPPED FACE



3' PALLET *Special Order

Weight: 3,050± lbs (inc. pallet)
Pieces Per Pallet: 8



UNIT

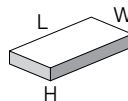
Dimensions: 36"L x 18"W x 7"H
Weight: 375± lbs

GUILLOTINE FACE



4' XL PALLET *Special Order

Weight: 2,750± lbs (inc. pallet)
Pieces Per Pallet: 4



UNIT

Dimensions: 48"L x 24"W x 7"H
Weight: 675± lbs

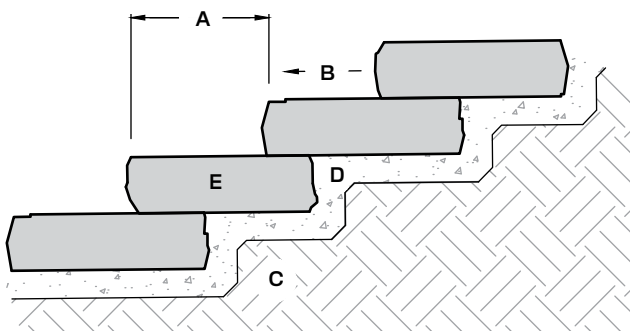
CHISELED FACE



NOTES FOR TYPICAL RESIDENTIAL INSTALLATION

This page shows a typical detail for steps.

- This drawing is for preliminary reference only (not for final construction).
- Final designs for construction **must be prepared by a registered professional engineer** using the actual conditions of the proposed site and loads.
- Block size and placement shown are for reference only, individual steps vary with installation pattern.



- Tread width varies (12" or more is desirable)
- Slope 1-2% (to allow drainage)
- Compact subbase material to a minimum of 95% max. dry density (or as specified by Engineer)
- Free-draining granular material (3" thick minimum compact to a min. of 95% max. dry density)
- Step block