

Brass Fittings • Spec Sheet



Threaded Fittings

ASTM B62-93-93 (C83600) 85-5-5-5
ANSI/ASME B1.20.1
ANSI/ASME B16.5
ANSI B16.18, B16.3 Class 125
ISO 9001:2000
Fed Spec. WW-P460C MSS-SP-106
ASTM B584-93B
Unions WW-U-516B
UL/FM Listed & Approved – EX15226
NSF-372 Approved

Threaded Flanges

ASTM B62
ASME B16.24
ASME B1.20.1, Class 150
ISO 9001:2000

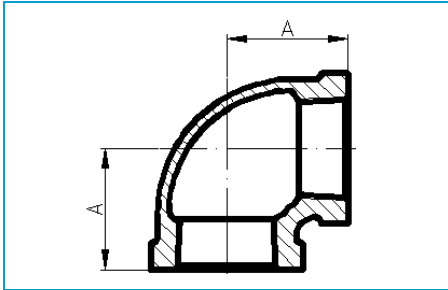


MATCO-NORCA

Global sourcing. National compliance. Local service.

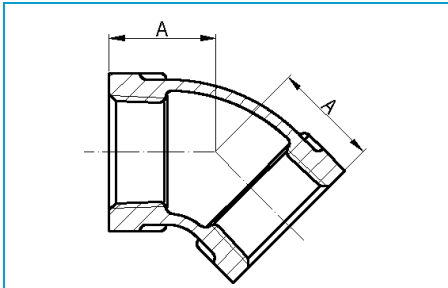
Brass Fittings • Spec Sheet

Brass Elbow 90



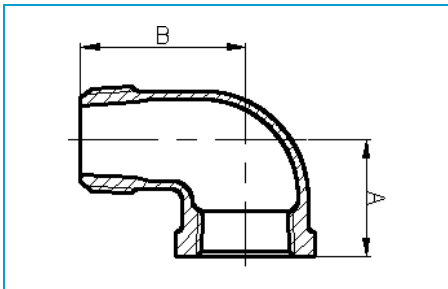
Size	1/8	1/4	3/8	1/2	3/4	1
A	0.54	0.71	0.82	1.01	1.18	1.43
Size	1-1/4	1-1/2	2	2-1/2	3	4
A	1.69	1.84	2.12	2.70	3.08	3.79

Brass Elbow 45



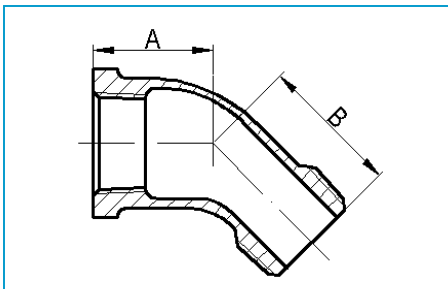
Size	1/8	1/4	3/8	1/2	3/4	1
A	0.42	0.56	0.63	0.78	0.89	1.06
Size	1-1/4	1-1/2"	2	2-1/2	3	4
A	1.22	1.30	1.45	1.95	2.17	2.61

Brass Street Elbow 90



Size	1/8	1/4	3/8	1/2	3/4	1
A	0.54	0.71	0.82	1.01	1.18	1.43
B	0.92	1.11	1.24	1.48	1.65	1.98
Size	1-1/4	1-1/2	2	2-1/2	3	4
A	1.69	1.84	2.12	2.64	3.01	3.72
B	2.24	2.46	2.88	3.80	4.45	5.63

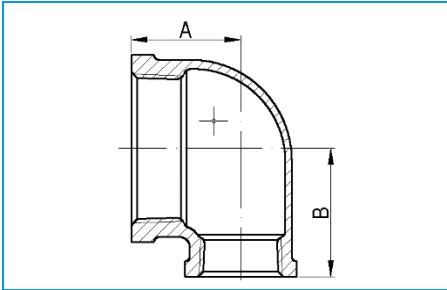
Brass Street Elbow 45



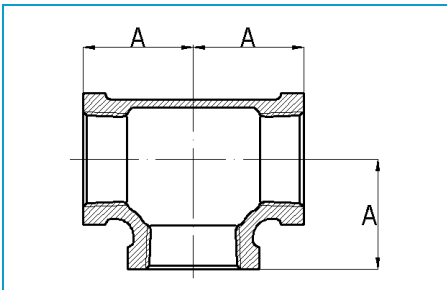
Size	1/8	1/4	3/8	1/2	3/4	1
A	0.42	0.56	0.63	0.78	0.89	1.06
B	0.78	0.88	0.92	1.06	1.23	1.40
Size	1-1/4	1-1/2	2			
A	1.22	1.30	1.45			
B	1.64	1.80	2.14			

Brass Fittings • Spec Sheet

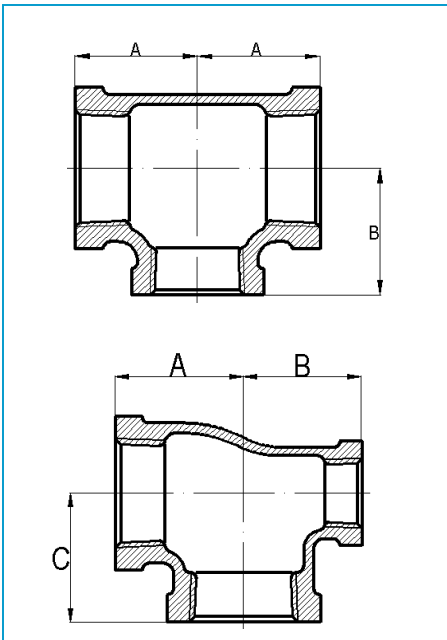
Brass Reducing Elbow



Brass Tee



Brass Reducing Tee



Size	3/8x1/4	1/2x1/8	1/2x1/4	1/2x3/8	3/4x1/8	3/4x1/4	3/4x3/8	3/4x1/2
A	0.75	0.87	0.93	0.93	1.04	1.02	1.08	1.08
B	0.79	0.91	0.95	0.90	1.06	1.06	1.10	1.11
Size	1x1/4	1x3/8	1x1/2	1x3/4	1-1/4x3/8	1-1/4x1/2	1-1/4x3/4	1-1/4x1
A	1.06	1.18	1.20	1.30	1.26	1.29	1.40	1.52
B	1.22	1.26	1.24	1.31	1.44	1.49	1.58	1.60
Size	1-1/2x1/2	1-1/2x3/4	1-1/2x1	1-1/2x1-1/4	2x1/2	2x3/4	2x1	2x1-1/4
A	1.26	1.50	1.56	1.67	1.48	1.59	1.67	1.89
B	1.50	1.73	1.73	1.77	1.87	1.97	1.97	2.09
Size	2x1-1/2	2-1/2x1/2	2-1/2x2	3 x 2	3 x 2-1/2	4 x 2	4 x 3	
A	1.89	2.09	2.39	2.48	2.82	2.72	3.29	
B	2.09	2.44	2.60	2.84	2.97	3.43	3.58	

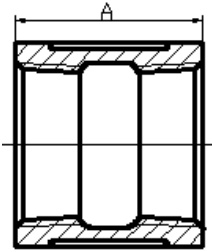
Size	1/8	1/4	3/8	1/2	3/4	1
A	0.54	0.71	0.82	1.01	1.18	1.43
Size	1-1/4	1-1/2	2	2-1/2	3	4
A	1.69	1.84	2.12	2.70	3.08	3.78

Size	3/8x1/8	3/8x1/4	1/2x1/4	1/2x3/8	1/2x1/2x3/4	3/4x1/4	3/4x3/8	3/4x1/2	3/4x3/4x1
A	0.75	0.81	0.87	0.92	1.11	1.04	1.08	1.08	1.28
B	0.79	0.92	0.87	0.90	1.11	1.06	1.11	1.11	1.26
Size	1x1/4	1x3/8	1x1/2	1x3/4	1-1/4x1/2	1-1/4x3/4	1-1/4x1	1-1/2x3/8	1-1/2x1/2
A	1.02	1.12	1.20	1.30	1.29	1.39	1.52	1.34	1.32
B	1.14	1.13	1.24	1.31	1.41	1.48	1.60	1.54	1.53
Size	1-1/2x3/4	1-1/2x1	1-1/2x1-1/4	2x3/8	2x1/2	2x3/4	2x1	2x1-1/4	
A	1.42	1.55	1.72	1.26	1.44	1.47	1.59	1.89	
B	1.60	1.72	1.81	1.81	1.83	1.72	1.95	2.09	
Size	2x1-1/2	2-1/2x1-1/4	2-1/2x1-1/2	2-1/2x2	3x1	3x2	3x2-1/2	4x2	4x3
A	1.90	1.97	2.16	2.32	1.93	2.52	2.75	2.66	3.23
B	2.10	2.40	2.51	2.54	2.64	2.89	2.91	3.37	3.54

Size	1/2x1/4x1/2	3/4x1/2x1/2	3/4x1/2x3/4	1x1/2x1/2	1x1/2x3/4	1x1/2x1
A	1.12	1.08	1.18	1.26	1.26	1.43
B	0.98	1.01	1.11	1.10	1.10	1.24
C	1.12	1.11	1.18	1.34	1.28	1.43
Size	1x3/4x1/2	1x3/4x3/4	1x3/4x1	1-1/4x1/2x1-1/4	1-1/4x3/4x1	
A	1.26	1.30	1.43	1.63	1.52	
B	1.20	1.18	1.31	1.36	1.38	
C	1.40	1.31	1.43	1.63	1.58	
Size	1-1/4x3/4x1-1/4	1-1/4x1x1-1/4	1-1/2x1/2x1-1/2	1-1/2x1-1/4x1-1/4	2x1/2x2	
A	1.63	1.63	1.93	1.66	2.24	
B	1.44	1.55	1.65	1.64	1.87	
C	1.63	1.63	1.93	1.76	2.24	

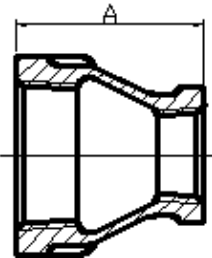
Brass Fittings • Spec Sheet

Brass Coupling



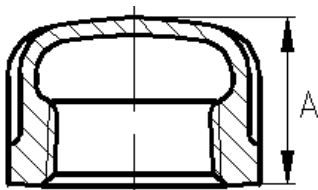
Size	1/8	1/4	3/8	1/2	3/4	1
A	0.80	0.97	1.05	1.29	1.43	1.68
Size	1-1/4	1-1/2	2	2-1/2	3	4
A	1.86	1.92	2.20	2.88	3.18	3.69

Brass Reducing Coupling



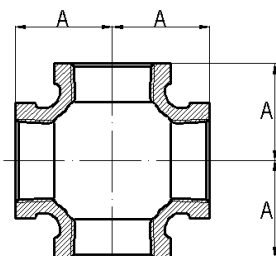
Size	1/4x1/8	3/8x1/8	3/8x1/4	1/2x1/8	1/2x1/4	1/2x3/8	3/4x1/4	3/4x3/8	3/4x1/2
A	0.88	1.01	1.01	1.13	1.13	1.17	1.24	1.24	1.36
Size	1x3/8	1x1/2	1x3/4	1-1/4x1/2	1-1/4x3/4	1-1/4x1	1-1/2x1/2	1-1/2x3/4	
A	1.44	1.49	1.56	1.65	1.65	1.77	1.80	1.80	
Size	1-1/2x1	1-1/2x1-1/4		2x1/2	2x3/4	2x1	2x1-1/4	2x1-1/2	2-1/2x1
A	1.80	1.89		2.03	2.03	2.03	2.03	2.06	3.25
Size	2-1/2x1-1/4	2-1/2x1-1/2	2-1/2x2	3x1	3x1/2	3x2	3x2-1/2	4x2	4x3
A	3.17	3.25	3.25	3.68	3.62	3.69	3.66	4.29	4.37

Brass Cap



Size	1/8	1/4	3/8	1/2	3/4	1
A	0.49	0.59	0.65	0.76	0.84	0.99
Size	1-1/4	1-1/2	2	2-1/2	3	4
A	1.10	1.15	1.32	1.70	1.80	2.08

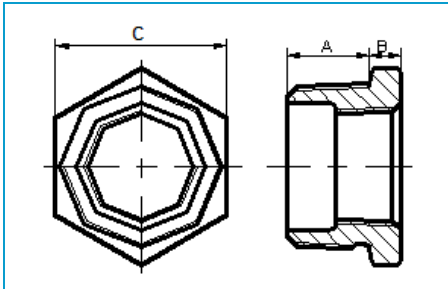
Brass Cross



Size	1/8	1/4	3/8	1/2	3/4	1
A	0.54	0.71	0.82	1.01	1.18	1.43
Size	1-1/4	1-1/2	2			
A	1.69	1.84	2.12			

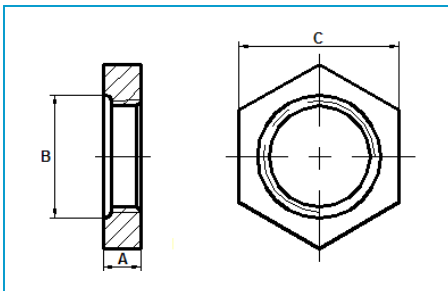
Brass Fittings • Spec Sheet

Brass Bushing



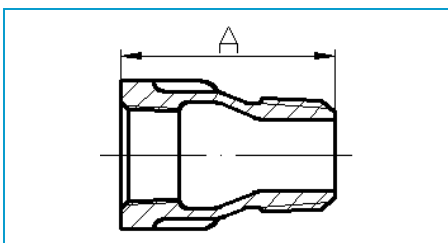
Size	1/4x1/8	3/8x1/8	3/8x1/4	1/2x1/8	1/2x1/4	1/2x3/8	3/4x1/8	3/4x1/4
A	0.44	0.48	0.48	0.56	0.56	0.56	0.63	0.63
B	0.14	0.16	0.16	0.19	0.19	0.19	0.22	0.22
C	0.64	0.68	0.68	0.87	0.87	0.87	1.15	1.15
Size	3/4x3/8	3/4x1/2	1x1/4	1x3/8	1x1/2	1x3/4	1-1/4x1/2	1-1/4x3/4
A	0.63	0.63	0.75	0.75	0.75	0.75	0.80	0.80
B	0.22	0.22	0.30	0.30	0.25	0.25	0.34	0.28
C	1.15	1.15	1.12	1.12	1.42	1.42	1.34	1.76
Size	1-1/4x1	1-1/2x1/4	1-1/2x3/8	1-1/2x1/2	1-1/2x 3/4	1-1/2x1	1-1/2x1-1/4	
A	0.80	0.83	0.84	0.83	0.83	0.83	0.83	
B	0.28	0.37	0.35	0.37	0.37	0.34	0.34	
C	1.76	1.16	1.12	1.34	1.61	2.0	2.0	
Size	2x1/2	2x3/4	2x1	2x1-1/4	2x1-1/2	2-1/2x1	2-1/2x1-1/4	
A	0.88	0.88	0.88	0.88	0.88	1.07	1.07	
B	0.41	0.41	0.41	0.34	0.34	0.44	0.45	
C	1.34	1.63	1.95	2.48	2.48	1.95	2.40	
Size	2-1/2x1-1/2	2-1/2x2	3x1-1/2	3x2	3x2-1/2	4x2	4x2-1/2	4x3
A	1.07	1.07	1.16	1.13	1.13	1.22	1.24	1.22
B	0.44	0.37	0.49	0.48	0.40	0.60	0.61	0.51
C	2.68	2.98	2.68	3.28	3.86	3.28	3.88	4.59

Brass Locknut



Size	1/8	1/4	3/8	1/2	3/4	1
A	0.19	0.25	0.29	0.31	0.34	0.38
B	0.50	0.66	0.77	0.97	1.23	1.50
C	0.69	0.84	1.00	1.18	1.43	1.75
Size	1-1/4	1-1/2	2	4		
A	0.42	0.47	0.53	0.91		
B	1.86	2.12	2.63	2.88		
C	2.10	2.35	2.88	5.32		

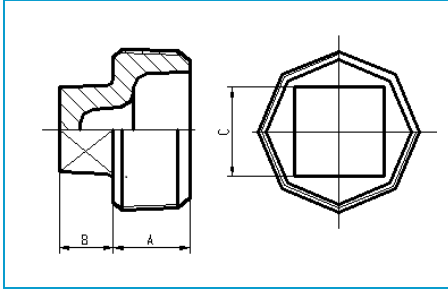
Brass Extension Piece



Size	1/2	3/4
A	1.69	1.89

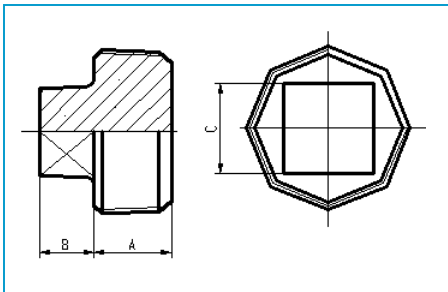
Brass Fittings • Spec Sheet

Brass Plug



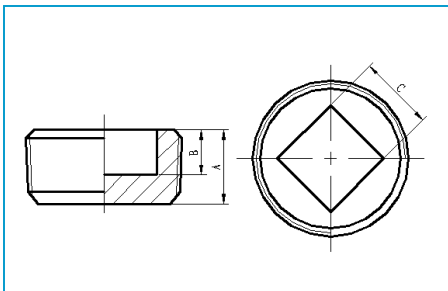
Size	1/8	1/4	3/8	1/2	3/4	1
A	0.27	0.41	0.41	0.54	0.55	0.69
B	0.24	0.28	0.31	0.38	0.44	0.50
C	0.28	0.37	0.43	0.56	0.62	0.81
Size	1-1/4	1-1/2	2	2-1/2	3	4
A	0.73	0.73	0.76	1.07	1.13	1.22
B	0.57	0.56	0.62	0.68	0.74	0.80
C	0.941	1.12	1.31	1.50	1.69	2.25

Brass Solid Plug



Size	1/2	3/4	1	1-1/4	1-1/2	2
A	0.54	0.55	0.69	0.71	0.73	0.76
B	0.38	0.44	0.50	0.55	0.56	0.62
C	0.56	0.62	0.81	0.94	1.12	1.31
Size	2-1/2	3	4			
A	1.08	1.16	1.26			
B	0.77	0.83	1.02			
C	1.45	1.63	2.17			

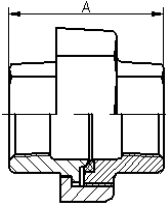
Brass Countersunk Plug



Size	1/2	3/4	1	1-1/2
A	0.54	0.55	0.71	0.73
B	0.38	0.44	0.60	0.62
C	0.37	0.50	0.50	0.75
Size	2	2-1/2	3	4
A	0.76	1.08	1.13	1.22
B	0.68	0.91	0.80	0.99
C	0.87	1.25	1.38	2.12

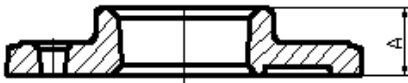
Brass Fittings • Spec Sheet

Brass Union



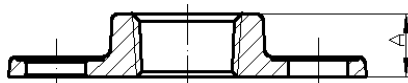
Size	1/8	1/4	3/8	1/2	3/4	1
A	1.26	1.46	1.61	1.73	1.95	2.07
Size	1-1/4	1-1/2	2	2-1/2	3	4
A	2.26	2.42	2.76	3.23	3.50	3.86

Brass Floor Flange



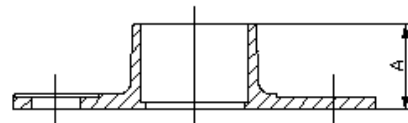
Size	1/2	3/4	1	1-1/2
A	0.53	0.60	0.71	0.87

Brass Companion Flange Threaded



Size	1/2	1	1-1/2	2	2-1/2	3	4
A	0.59	0.69	0.88	1.00	1.12	1.19	1.31

Brass Companion Flange Sweat



Size	1	1-1/2	2	2-1/2	3	4
A	0.98	1.19	1.44	1.60	1.79	2.28


MATCO-NORCA
 Global sourcing. National compliance. Local service.

CALIFORNIA 5593 Fresca Dr., La Palma CA 90623 • Toll Free: 866-532-8306 • Fax: 866-532-8307
TEXAS 1150 Silber Rd., Houston TX 77055 • Toll Free: 800-935-5456 • Fax: 713-680-2999
NEW YORK PO Box 27, Rt. 22, Brewster NY 10509 • Toll Free: 800-431-2082 • Fax: 845-278-9056
 WEB: www.matco-norca.com EMAIL: mail@matco-norca.com