

# EZ MULCH AF

## PAPER & CORN FIBER PELLETS

### Superior performance in all seeding applications\* HAND • DROP SPREADER • HYDROSEEDER

- Pellets expand fully in minutes
- Holds up to 40% more water than other pellet mulches
- Best flowing pellet mulch available
- Absolutely no weed seed
- Very low dust
- Made from recycled paper and corn fiber
- Biodegradable and pet friendly
- Enhances germination, minimizes erosion, and improves seed to soil contact
- Dark green color
- Effective alternative to traditional hydraulic baled mulches

\* Does not contain seed

#### Product Statement

EZ Mulch Advanced Formula (EZ Mulch AF) is formulated with a unique blend of paper and corn fiber. With our patented technology, EZ Mulch AF can be used in all types of seeding applications: hydraulic seeder, spreader, and by hand.

To maximize germination, seed must have good contact with the soil and be kept from drying out after germination. After applying mulch, water to expand and activate the pellets. EZ Mulch AF is designed to expand quickly and hold more than eight times its weight in water.

Regular watering will protect the seed from drying out and ultimately improve germination and vegetation. Increased application rate in case of limited watering frequency should not exceed a 2X rate.

**Use of this product may fall under U.S. Patent #'s 6,523,299 B2 or other patents.**



ENVIRONMENTAL PRODUCTS, LLC™

For more information contact: **LSC Environmental Products, LLC**  
1-800-800-7671 • Sales@LSCenv.com • www.LSCenv.com

**Net Weight 40 lbs. (18.1 kg)**

Made in USA

# EZ MULCH AF


## PAPER & CORN FIBER PELLETS

Application Rate	
Flat	50# / 1000 ft <sup>2</sup>
>4:1 Max Length 30 ft	55# / 1000 ft <sup>2</sup>
>4:1 <3:1 Max Length 25 ft	60# / 1000 ft <sup>2</sup>

Technical Data	
Organic Content:	>99%
Moisture Content:	10% (+/- 2%)
Color:	Green
Water Holding Capacity:	> 800%
pH:	6.5 (+/- 1)

Not recommended for slopes >3:1  
One 40 lb bag covers up to 800 ft<sup>2</sup>  
Contact your LSC representative for site specific application rate and instructions.

1. Fill tank 1/3 full with water.
  2. Turn hydroseeder on and engage pump/clutch for paddle or jet agitation.
  3. Purge systems and pre-wet hose or nozzle.
  4. Optional: Add Tackifier (mix according to manufacturers directions – recommended for mild slopes).
  5. Pour in first bag of EZ Mulch AF.
  6. Add grass seed.
  7. Continue to fill tank with water while adding EZ Mulch AF.
  8. Finish adding the proper amount of EZ Mulch AF before tank is full of water.
  9. Apply over soil at recommended rate.
  10. Purge system with clean water after use.
- Learn more about EZ Mulch AF 

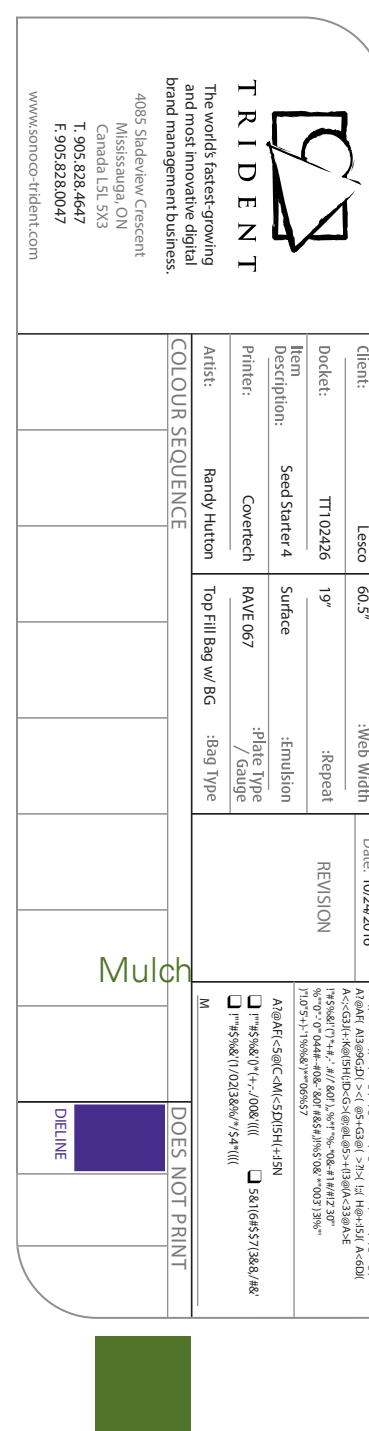
#### Hydroseeding Directions

1. Prepare soil and spread grass seed and fertilizer according to seed package instructions. EZ Mulch AF contains no seed.
2. Spread EZ Mulch AF over seeded area at appropriate rate (see Coverage Rate Chart). This can be done by hand or with a spreader on the highest setting. You may need to go over the area several times depending upon the type of spreader used.
3. Water EZ Mulch AF pellets, which will expand to cover and protect the seeded ground. Repeat watering daily for 10-14 days or until new growth appears, then reduce watering to once per week for the first month after seeding. EZ Mulch AF will naturally biodegrade and add organic content to your soil.
4. Apply lawn fertilizer 6-8 weeks after initial seeding to establish a thicker, greener stand of grass.

#### Dry Seeding Directions

# EZ MULCH AF

## PAPER & CORN FIBER PELLETS



28 in.  
FRONT

4 in.  
GUSSET

28 in.  
BACK

0.5 in.  
LIP