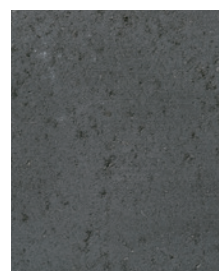


# Cassina 70mm



DOVER



ONYX

**Coping:** Cassina, Onyx  
**Slabs:** Nueva® Slab, Marble Grey

*Nueva® Collection*



**8" Coping Stone**  
 8 x 12"  
 (203 x 305mm)  
**Individually Packaged**  
 LIMITED AVAILABILITY



**12" Coping Stone NEW!**  
 12 x 12"  
 (305 x 305mm)  
**Individually Packaged**

# Packaging Specifications

	Per Full Bundle				Per Layer				Per Section				Per Pc.		
CASSINA	Sq. Ft.	Lin. Ft.	Pieces	Wt. (lbs)	Layers	Sq. Ft.	Lin. Ft.	Pieces	Wt. (lbs)	Sections	Sq. Ft.	Lin. Ft.	Pieces	Wt. (lbs)	Wt./pc. (lbs)
8" Coping Stone	52	52	78	1716	3	17.3	17.3	26	572	-	-	-	-	-	22
12" Coping Stone <b>NEW!</b>	60	60	60	1980	2	30	30	30	990	3	20	20	20	660	33

Weights/Piece are approximate.

## FEATURES & RECOMMENDED USES

# Product Matrix

			RECOMMENDED USES				
PRODUCT	THICKNESS	SIZE	POOL COPING	WALL COPING/CAP	SEAT WALL	FIRE PIT COPING	STEP TREAD
Cassina	70mm	8" Coping Stone	√	√	√	√	√
		12" Coping Stone	√	√	√	√	√

All Oaks Landscape products fully meet or exceed the latest version of CSA A231, ASTM C936, ASTM C1372 or ASTM C1782 as applicable to the specific product and area of sale.



OAKSPAVERS.COM

CA 1.800.709.OAKS (6257) | US 1.800.876.OAKS (6257)

Product representations shown in this publication are intended to convey the general colour, texture and appearance of the product. Variations may occur in the manufacturing and printing process. Always select from current, physical product samples.