



# PRO-TRADE®

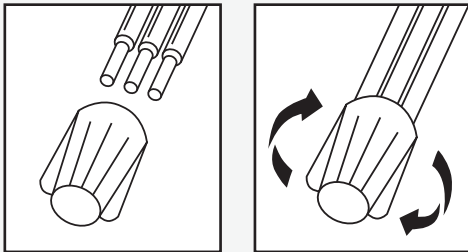
For use with Irrigation or Outdoor Lighting Systems



## INSTALLATION INSTRUCTIONS

**IMPORTANT:** Turn off power before installing or removing connector. Product to be used in accordance with local and national codes.

1. Strip wires 5/8".
2. Align frayed strands or conductors.
3. No pre-twisting needed. Hold stripped wires together with ends even. Note: Twist and lead stranded wires slightly.
4. Push wires firmly into connector when starting.
5. Twist connector onto wires pushing firmly until tight. Do not over torque. Do not reuse.



## Tan Low Voltage Connectors

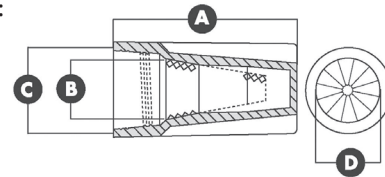
Part #	Selling Unit
PT-WC5-TN-15	Bag of 15
PT-WC5-TN-50	Bag of 50

## PRODUCT SPECIFICATIONS & MEASUREMENTS

Max. Voltage: 30V/10 AMP  
 Connector Size: 13/16" x 1 9/16"  
 Wire Type: Copper/Copper  
 Wire Range: Min #22/Max #6  
 Temperature Rating: 75°C (167°F)  
 Petroleum Sealant Temperature: -29°F to 250°F

Measurements (Inches):

A - 1.563 B - 0.813  
 C - 0.656 D - 0.656



Suitable for all underground low voltage applications.

## 30V/10 AMP

3-6 #22	3 #18 w/1-3 #12, 14 or 16	2 #14 w/1-2 #12
2-6 #18 or 20	3 #18 w/1-2 #10	2 #14 w/1 #8 or 10
1-6 #14 or 16	4 #18 w/1-2 #12, 14 or 16	3 #14 w/1 #10 or 12
1-3 #10 or 12	4 #18 w/1 #10	3 #14 w/2 #12
4 #12 solid	5 #18 w/1 #14 or 16	4 #14 w/1 #12
1 #6	1 #16 w/1-4 #12 or 14	1 #12 w/1 #8 or 10
1 #22 w/2-5 #20	1 #16 w/1-2 #10	2 #12 w/1 #10
1 #22 w/1-5 #16 or 18	2 #16 w/1-4 #14	1 #22 w/1 #16 & 18
2 #22 w/1-4 #16, 18 or 20	2 #16 w/1-3 #12	1 #22 w/1-2 #16 & 1 #20
3 #22 w/1-3 #16, 18 or 20	2 #16 w/1-2 #10	1 #16 w/1 #10 or 12 & 1-2 #14
4 #22 w/1-2 #16, 18 or 20	3 #16 w/1-3 #14	1-2 #16 w/1 #10 & 12
1 #20 w/1-4 #14, 16 or 18	3 #16 w/1-2 #10 or 12	2 #16 w/1-2 #12 & 1 #14
2 #20 w/1-3 #14, 16 or 18	4 #16 w/1-2 #12 or 14	2 #16 w/1 #12 & 2 #14
3 #20 w/1-2 #14, 16 or 18	4 #16 w/1 #10	3 #16 w/1 #10 or 12 & 1 #14
4 #20 w/1-2 #14, 16 or 18	5 #16 w/1 #14	4 #16 w/1 #10 & 12
1 #18 w/1-4 #12 or 14	5 #16 solid w/1 #10 solid	2 #14 w/1 #10 & 1-2 #12
1-2 #18 w/1-2 #10	1 #14 solid w/1-3 #12	2 #14 w/1 #10 & 12
2 #18 w/1-4 #12, 14 or 16	1 #14 w/1-2 #10	

