

LIST PRICE BOOK PVC INSERT PRESSURE FITTINGS

PRICE GROUP	DESCRIPTION	DISCOUNT MULTIPLIER
05	PVC INSERT FITTINGS	

Prices Effective May 16, 2022

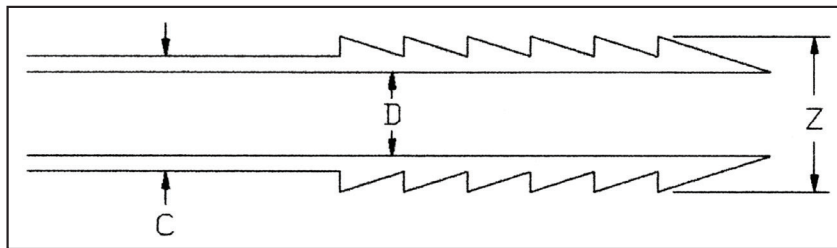
RECOMMENDED INSTALLATION PROCEDURES

INSERT (BARBED) CONNECTIONS:

Sizes $\frac{1}{2}$, $\frac{3}{4}$ and 1inch - one clamp directly over barbs.

Sizes $1\frac{1}{4}$ inch and greater - one clamp directly over barbs plus one additional clamp.

INSERT DIAMETER DIMENSIONS



MAXIMUM DIAMETERS

Size	C MAX	D MIN	Z MAX
$\frac{1}{2}$	0.635	0.406	0.665
$\frac{3}{4}$	0.835	0.562	0.865
1	1.055	0.750	1.095
$1\frac{1}{4}$	1.375	0.995	1.425
$1\frac{1}{2}$	1.605	1.125	1.665
2	2.065	1.656	2.125
$2\frac{1}{2}$	2.460	2.062	2.520
3	3.065	2.600	3.125
4	4.030	3.525	4.090



Insert

TEE				
Part No	Size (in)	Ctn Qty	Code	List Price
1401-005	1/2	50	05	4.58
1401-007	3/4	50	05	4.99
1401-010	1	25	05	6.45
1401-012	1 1/4	10	05	10.08
1401-015	1 1/2	10	05	11.42
1401-020	2	10	05	22.57
1401-030	3	5	05	81.17



Insert x Insert
x Reducing
Insert

REDUCING TEE				
Part No	Size (in)	Ctn Qty	Code	List Price
1401-101	3/4 x 3/4 x 1/2	25	05	5.63
1401-130	1 x 1 x 1/2	25	05	6.59
1401-131	1 x 1 x 3/4	25	05	6.63
1401-166	1 1/4 x 1 1/4 x 1/2	25	05	8.63
1401-167	1 1/4 x 1 1/4 x 3/4	25	05	8.63
1401-168	1 1/4 x 1 1/4 x 1	25	05	8.63
1401-209	1 1/2 x 1 1/2 x 1/2	10	05	15.03
1401-210	1 1/2 x 1 1/2 x 3/4	10	05	15.03
1401-211	1 1/2 x 1 1/2 x 1	10	05	15.03
1401-212	1 1/2 x 1 1/2 x 1 1/4	10	05	15.03
1401-247	2 x 2 x 1/2	10	05	21.41
1401-248	2 x 2 x 3/4	10	05	21.41
1401-249	2 x 2 x 1	10	05	21.41
1401-250	2 x 2 x 1 1/4	10	05	22.41
1401-251	2 x 2 x 1 1/2	10	05	23.09



Insert x
Reducing
Insert x Reduc-
ing Insert

REDUCING TEE				
Part No	Size (in)	Ctn Qty	Code	List Price
1401-094	3/4 x 1/2 x 1/2	25	05	6.15
1401-125	1 x 3/4 x 3/4	25	05	10.70
1401-157	1 1/4 x 1 x 3/4	25	05	12.29
1401-158	1 1/4 x 1 x 1	25	05	12.29
1401-202	1 1/2 x 1 1/4 x 1	10	05	15.43
1401-203	1 1/2 x 1 1/4 x 1 1/4	10	05	15.43



Insert x Insert x
Double Helix

TEE				
Part No	Size (in)	Ctn Qty	Code	List Price
1401-099	3/4	25	05	7.11
1401-129	1	25	05	7.78



Slip x Slip x
Insert

TRANSITION TEE				
Part No	Size (in)	Ctn Qty	Code	List Price
1102-249	2 x 2 x 1	10	01	11.28

*See Schedule 40 Price List; Discounts will vary.



Insert x Insert x
Bullhead Insert

BULLHEAD TEE				
Part No	Size (in)	Ctn Qty	Code	List Price
1401-074	1/2 x 1/2 x 3/4	25	05	12.36
1401-102	3/4 x 3/4 x 1	25	05	14.22
1401-132	1 x 1 x 1 1/4	25	05	19.85



Insert x Insert
x FPT

COMBINATION TEE				
Part No	Size (in)	Ctn Qty	Code	List Price
1402-005	1/2	50	05	4.99
1402-007	3/4	50	05	7.43
1402-010	1	25	05	8.78
1402-012	1 1/4	10	05	12.90
1402-015	1 1/2	10	05	22.41
1402-020	2	10	05	27.80



Insert x Insert
x FPT

COMBINATION TEE				
Part No	Size (in)	Ctn Qty	Code	List Price
1402-101	3/4 x 3/4 x 1/2	25	05	6.15
1402-130	1 x 1 x 1/2	25	05	8.12
1402-131	1 x 1 x 3/4	25	05	8.12
1402-166	1 1/4 x 1 1/4 x 1/2	25	05	11.04
1402-167	1 1/4 x 1 1/4 x 3/4	25	05	12.22
1402-168	1 1/4 x 1 1/4 x 1	25	05	12.90
1402-209	1 1/2 x 1 1/2 x 1/2	10	05	17.00
1402-210	1 1/2 x 1 1/2 x 3/4	10	05	20.18
1402-211	1 1/2 x 1 1/2 x 1	10	05	20.18
1402-212	1 1/2 x 1 1/2 x 1 1/4	10	05	20.68
1402-247	2 x 2 x 1/2	10	05	22.82
1402-248	2 x 2 x 3/4	10	05	24.14
1402-249	2 x 2 x 1	10	05	26.53
1402-251	2 x 2 x 1 1/2	10	05	27.80



Insert x
Reducing
Insert x
Reducing FPT

COMBINATION TEE				
Part No	Size (in)	Ctn Qty	Code	List Price
1402-094	3/4 x 1/2	25	05	8.11
1402-124	1 x 3/4 x 1/2	25	05	10.13
1402-125	1 x 3/4 x 3/4	25	05	12.05
1402-156	1 1/4 x 1 x 1/2	25	05	14.92
1402-157	1 1/4 x 1 x 3/4	25	05	17.47



Insert x Insert
x MPT

COMBINATION TEE				
Part No	Size (in)	Ctn Qty	Code	List Price
1403-005	1/2	50	05	6.33
1403-007	3/4	50	05	8.63
1403-010	1	25	05	11.04
1403-012	1 1/4	10	05	14.43
1403-015	1 1/2	10	05	16.11

ELBOWS, CROSS

PVC INSERT FITTING PRICE LIST



Insert x Insert

90° ELBOW				
Part No	Size (in)	Ctn Qty	Code	List Price
1406-005	1/2	50	05	4.16
1406-007	3/4	50	05	5.10
1406-010	1	25	05	5.64
1406-012	1 1/4	10	05	6.33
1406-015	1 1/2	10	05	7.43
1406-020	2	10	05	10.43
1406-030	3	8	05	59.36



Insert x Reducing Insert

90° REDUCING ELBOW				
Part No	Size (in)	Ctn Qty	Code	List Price
1406-101	3/4 x 1/2	25	05	4.83
1406-131	1 x 3/4	25	05	5.95
1406-168	1 1/4 x 1	25	05	8.78
1406-212	1 1/2 x 1 1/4	10	05	10.43



Insert x FPT

90° COMBINATION ELBOW				
Part No	Size (in)	Ctn Qty	Code	List Price
1407-005	1/2	50	05	4.72
1407-007	3/4	50	05	5.10
1407-010	1	25	05	6.59
1407-012	1 1/4	10	05	9.74
1407-015	1 1/2	10	05	11.04
1407-020	2	10	05	18.73



Insert x FPT

90° Reducing Combination Elbow				
Part No	Size (in)	Ctn Qty	Code	List Price
1407-101	3/4 x 1/2	50	05	4.83
1407-130	1 x 1/2	25	05	5.10
1407-131	1 x 3/4	25	05	5.95
1407-166	1 1/4 x 1/2	25	05	8.78
1407-167	1 1/4 x 3/4	25	05	8.78
1407-168	1 1/4 x 1	25	05	8.78
1407-211	1 1/2 x 1	10	05	9.98
1407-212	1 1/2 x 1 1/4	10	05	10.87
1407-251	2 x 1 1/2	10	05	17.74



Insert x Slip

90° ELBOW				
Part No	Size (in)	Ctn Qty	Code	List Price
127-957	1 1/2	50	05	19.05



Insert x MPT

90° COMBINATION ELBOW				
Part No	Size (in)	Ctn Qty	Code	List Price
1413-005	1/2	50	05	5.26
1413-007	3/4	50	05	7.29
1413-010	1	25	05	9.55
1413-012	1 1/4	10	05	12.70
1413-015	1 1/2	10	05	16.86
1413-020	2	10	05	26.60



FIPT x Insert

SIDE OUTLET ELBOW				
Part No	Size (in)	Ctn Qty	Code	List Price
1414-101	3/4 x 3/4 x 1/2	50	05	12.05
1414-130	1 x 1 x 1/2	25	05	12.96
1414-131	1 x 1 x 3/4	25	05	12.96



Insert

SIDE OUTLET TEE				
Part No	Size (in)	Ctn Qty	Code	List Price
1416-007	3/4	50	05	15.53
1416-101	3/4 x 1/2	50	05	15.53
1416-130	1 x 1/2	50	05	16.52
1416-131	1 x 3/4	50	05	16.52

CROSS



Insert

CROSS				
Part No	Size (in)	Ctn Qty	Code	List Price
1420-007	3/4	25	05	12.00
1420-010	1	25	05	14.89

PVC INSERT FITTING PRICE LIST

COUPLINGS, ADAPTERS



Insert x Insert

COUPLING					
Part No	Size (in)	Ctn Qty	Code	List Price	
1429-005	1/2	50	05	2.14	
1429-007	3/4	50	05	2.58	
1429-010	1	50	05	2.71	
1429-012	1 1/4	25	05	3.96	
1429-015	1 1/2	25	05	4.68	
1429-020	2	10	05	8.93	
1429-030	3	10	05	38.98	
1429-040	4	10	05	53.05	



Insert x MPT

MALE ADAPTER					
Part No	Size (in)	Ctn Qty	Code	List Price	
1436-005	1/2	50	05	2.13	
1436-007	3/4	50	05	2.58	
1436-010	1	50	05	2.65	
1436-012	1 1/4	20	05	4.22	
1436-015	1 1/2	25	05	4.68	
1436-020	2	10	05	8.99	
1436-030	3	10	05	42.52	
1436-040	4	10	05	59.11	



Insert x Reducing Insert

REDUCING COUPLING					
Part No	Size (in)	Ctn Qty	Code	List Price	
1429-101	3/4 x 1/2	50	05	3.46	
1429-130	1 x 1/2	50	05	4.74	
1429-131	1 x 3/4	50	05	3.59	
1429-167	1 1/4 x 3/4	25	05	7.32	
1429-168	1 1/4 x 1	25	05	5.64	
1429-210	1 1/2 x 3/4	25	05	8.93	
1429-211	1 1/2 x 1	25	05	8.52	
1429-212	1 1/2 x 1 1/4	25	05	6.63	
1429-249	2 x 1	10	05	12.05	
1429-250	2 x 1 1/4	10	05	11.21	
1429-251	2 x 1 1/2	10	05	10.66	



Reducing MPT x Insert

REDUCING MALE ADAPTER					
Part No	Size (in)	Ctn Qty	Code	List Price	
1436-074	1/2 x 3/4	50	05	6.63	
1436-075	1/2 x 1	50	05	6.93	
1436-102	3/4 x 1	50	05	6.93	
1436-132	1 x 1 1/4	25	05	8.35	
1436-133	1 x 1 1/2	25	05	12.62	
1436-169	1 1/4 x 1 1/2	10	05	12.62	
1436-213	1 1/2 x 2	10	05	16.16	



MPT x Reducing Insert

REDUCING MALE ADAPTER					
Part No	Size (in)	Ctn Qty	Code	List Price	
1436-101	3/4 x 1/2	50	05	5.99	
1436-131	1 x 3/4	50	05	6.15	
1436-167	1 1/4 x 3/4	25	05	7.32	
1436-168	1 1/4 x 1	25	05	7.83	
1436-211	1 1/2 x 1	25	05	9.55	
1436-212	1 1/2 x 1 1/4	25	05	9.55	
1436-251	2 x 1 1/2	10	05	16.04	



Insert x Double Helix

REDUCING COUPLING					
Part No	Size (in)	Ctn Qty	Code	List Price	
1429-099	3/4	50	05	4.60	
1429-129	1	50	05	4.90	

ADAPTERS



Insert x Spg/ Slip

FITTING ADAPTER					
Part No	Size (in)	Ctn Qty	Code	List Price	
1432-010	1 x 1 Spigot (3/4 Slip)	50	05	6.33	
1432-131	3/4 x 1 Spigot (3/4 Slip)	50	05	6.33	



MPT x 2" length SP

POOL ADAPTER					
Part No	Size (in)	Ctn Qty	Code	List Price	
1436-170	1 1/4	25	05	11.28	
1436-205	1 1/2 x 1 1/4 x 2	25	05	13.01	



Insert x SP

INSERT ADAPTER (WHITE PVC)					
Part No	Size (in)	Ctn Qty	Code	List Price	
460-007	3/4 x 3/4 SP (1/2 Slip)	50	01	*	
460-010	1 x 1 SP (3/4 Slip)	50	01	*	
460-015	1 1/2 x 1 1/2 SP	25	01	*	

*See Schedule 40 Price List; Discounts will vary.



Insert x FPT

FEMALE ADAPTER					
Part No	Size (in)	Ctn Qty	Code	List Price	
1435-005	1/2	50	05	9.35	
1435-007	3/4	50	05	10.13	
1435-101	1/2 x 3/4	50	05	12.02	
1435-010	1	50	05	11.21	
1435-012	1 1/4	25	05	13.76	
1435-015	1 1/2	25	05	17.47	
1435-020	2	10	05	22.22	



Slip x Insert PVC pipe to Flexible pipe

ADAPTER (WHITE PVC)					
Part No	Size (in)	Ctn Qty	Code	List Price	
474-007	3/4	50	01	*	
474-010	1	50	01	*	
474-015	1 1/2	25	01	*	

*See Schedule 40 Price List; Discounts will vary.



Insert

INSERT PLUG				
Part No	Size (in)	Ctn Qty	Code	List Price
1449-005	1/2	100	05	3.79
1449-007	3/4	100	05	3.96
1449-010	1	50	05	5.33
1449-012	1 1/4	25	05	6.75
1449-015	1 1/2	25	05	7.39
1449-020	2	10	05	13.01

RISER EXTENDER



MPT x FPT

RISER EXTENDER (WHITE PVC)				
Part No	Size (in)	Ctn Qty	Code	List Price
434-005	1/2 x 2 ¹ / ₁₆ lg	50	01	*
434-007	3/4 x 1 ⁵ / ₈ lg	50	01	*
434-008	3/4 x 2 ¹⁵ / ₁₆ lg	50	01	*
434-020	2 x 2 ¹¹ / ₁₆ lg	25	01	*
439-005	1/2 x 1 ³ / ₈ lg	50	01	*

*See Schedule 40 Price List; Discounts will vary.

STANDARDS AND SPECIFICATIONS – PVC INSERTS

ASTM D-2609 –

Plastic Insert Fittings for Polyethylene (PE) Plastic Pipe.

ASTM D-1784 –

Rigid Poly (Vinyl Chloride) (PVC) Compounds and Chlorinated Poly (Vinyl Chloride) (CPVC) Compounds.

ASTM F-1970 –

Standard Specification for Special Engineered Fittings, Appurtenances or Valves for use in Poly (Vinyl Chloride) (PVC) or Chlorinated Poly (Vinyl Chloride) (CPVC) Systems.

MATERIAL –

Westlake Pipe & Fittings Schedule 40 Fittings are produced from PVC TYPE 1, CELL Classification 12454-B.

LISTINGS –

NSF (National Sanitation Foundation) for potable water services.

Contact Westlake Pipe & Fittings Technical Services for additional information regarding applicable standards and specifications.

TERMS AND WARRANTY

As you explore our latest product offerings, the Terms and Conditions and the Warranty information are available on our website through the links below.

[Terms and Conditions](#)

[Warranty](#)

DO NOT USE WESTLAKE FITTINGS FOR COMPRESSED AIR OR GASES.

DO NOT TEST PVC PIPING SYSTEMS WITH COMPRESSED AIR OR GASES.

DO NOT USE FITTINGS WITH LIQUIDS NOT RECOMMENDED BY WESTLAKE PIPE & FITTINGS.

MODIFICATIONS OF FITTINGS VOIDS THE WARRANTY.



⚠ WARNING:

USE OF COMPRESSED AIR OR GAS IN PVC/CPVC PIPE AND FITTINGS CAN RESULT IN EXPLOSIVE FAILURES AND CAUSE SEVERE INJURY OR DEATH.

www.westlakepipe.com

Sales & Distribution Center

Westlake Pipe & Fittings

414 Morgan Street

Brownsville, TN 38012

T 1.800.776.2756

F 1.731.772.0835

customerservice@westlakepipe.com

Westlake
Pipe & Fittings