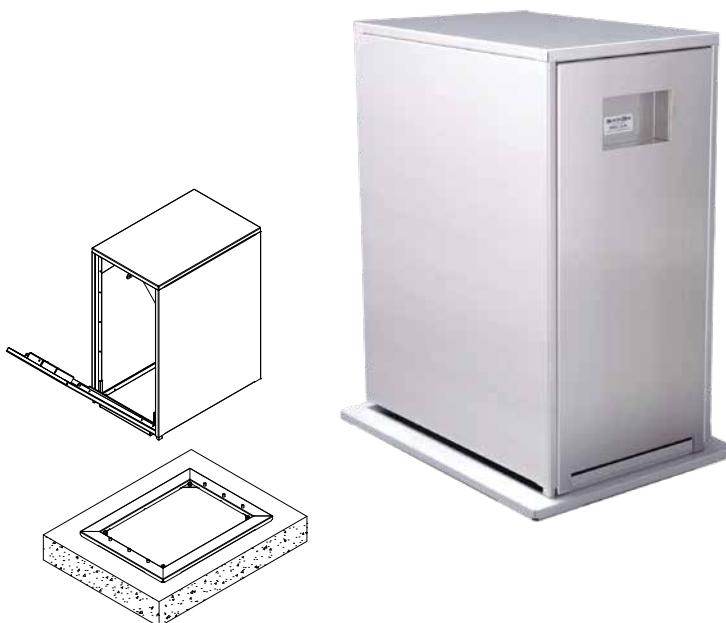


## Front Entry Enclosure

	Width	Height	Depth
SBBC-22AL	23"	30"	15"
SBBC-30AL	30"	30"	15"
SBBC-45AL	45"	30"	15"
SBBC-52AL	52"	31"	22"

Note: For inside dimensions, see Backflow Cover Sizing Chart on pages 28-29.

- Marine grade aluminum
- Stainless steel hardware
- Flush-mounted locking system accepts padlock
- ASSE 1060 Rated
- 5 year limited warranty



**SPECIFICATIONS ON PAGE 30**

## Clamshell Entry Two Piece Enclosure

	Width	Height	Depth
SBBC-60AL *	60"	31"	15"
SBBC-40ALHP	41"	39"	24"
SBBC-60ALHP	61"	39"	24"
SBBC-75ALHP	76"	39"	24"
SBBC-90ALHP	91"	39"	24"

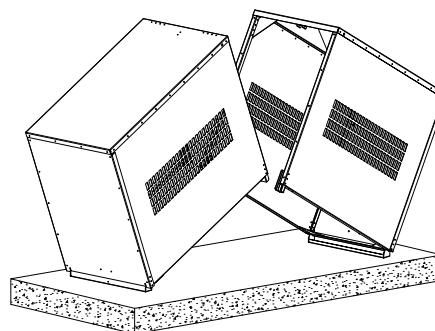
Note: For inside dimensions, see Backflow Cover Sizing Chart on pages 28-29.

\*Asterisked parts do not have punched holes

	Width	Height	Depth
PE-40AL *	41"	39"	38"
PE-60AL *	61"	39"	38"
SBBC-40-WALHP	41"	39"	28"

\*Asterisked include louvers instead of punched holes

- Marine grade aluminum
- Stainless steel hardware
- Latch rod locking system accepts padlock
- ASSE 1060 Rated
- 5 year limited warranty

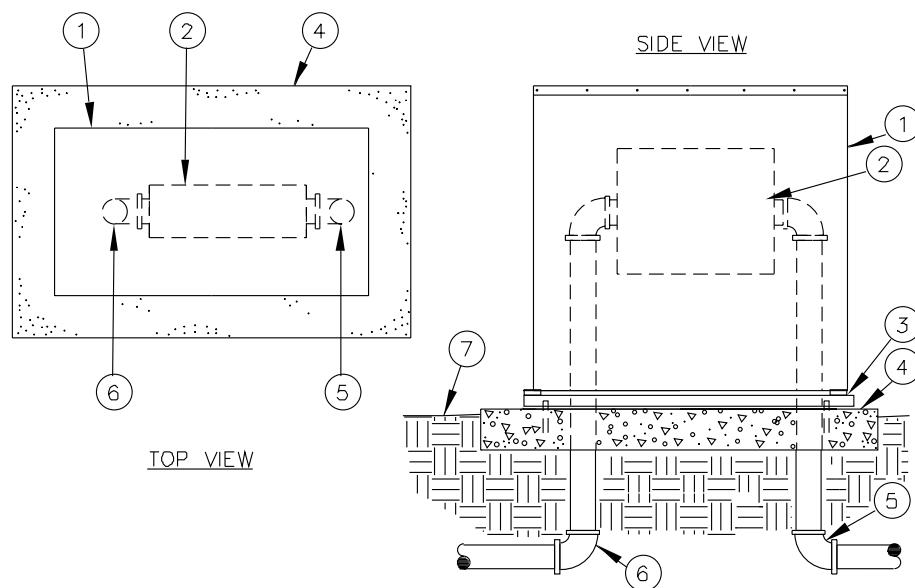


**SPECIFICATIONS ON PAGE 31**

## INSTALLATION DETAILS

## FRONT ENTRY ENCLOSURE

**MODELS: SBBC-22AL, SBBC-30AL,  
SBBC-45AL, SBBC-52AL**



- |   |   |
|---|---|
| 1. Aluminum Backflow Enclosure  | 4. Poured Concrete Base – 6" min. thickness extend 4" beyond outside of enclosure |
| 2. Backflow Preventer   | 5. Water Service Inlet Piping   |
| 3. Framed Mounting Base – powder coated polymer with anchors inset for enclosure and anchor bolt for concrete | 6. Water Service Outlet Piping  |
|   | 7. Finish Grade   |

## SPECIFICATIONS

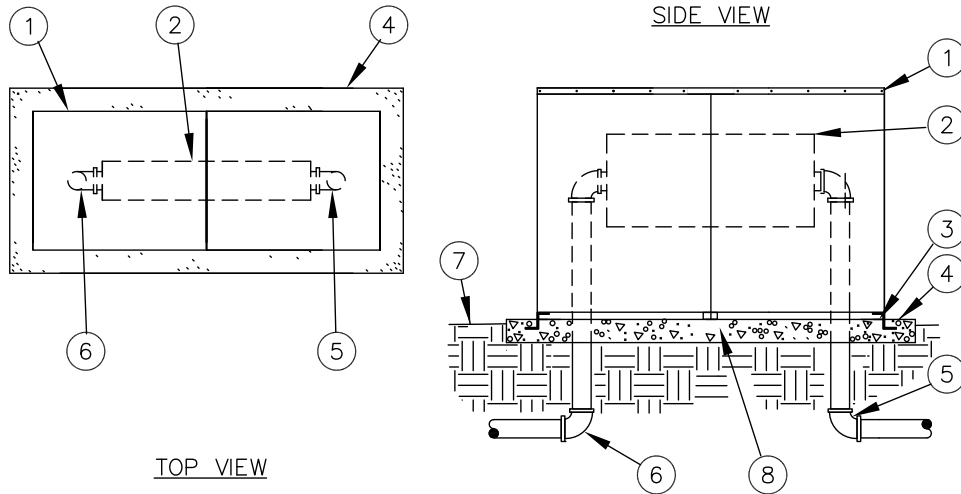
This backflow enclosure is a vandal and weather resistant enclosure formed entirely of marine grade 5052-H32 aluminum alloy, with a wall thickness of 1/8 inch. The main housing is a solid sheet construction with stainless steel carriage bolts used for assembling enclosure top and

ends. The mounting base plate is formed of powder coated stainless steel and is mounted flush with the concrete surface using supplied L-bolt anchors. The enclosure door drops down and the body lifts open, pivoting from the back edge. The enclosure stays secured to the mounting base plate in

open and closed positions with hidden stainless steel hardware. The enclosure door includes a recessed handle and provisions for a padlock. This enclosure is ASSE 1060 Class III rated.

## INSTALLATION DETAILS CLAMSHELL ENTRY ENCLOSURE

**MODELS: SBBC-60AL, SBBC-40ALHP,  
SBBC-60ALHP, SBBC-75ALHP, SBBC-90ALHP  
PE-40AL, PE-60AL, SBBC-40WALHP**



- |  |                                |
|--|--------------------------------|
| 1. Aluminum Enclosure  | 5. Water Service Inlet Piping  |
| 2. Backflow Preventer/ Pump  | 6. Water Service Outlet Piping |
| 3. Anchor Rake Brace   | 7. Finish Grade                |
| 4. Poured Concrete Base – 6" min. thickness<br>extend 4" beyond outside of enclosure | 8. Enclosure Foot              |

## SPECIFICATIONS

This pump enclosure is a vandal and weather resistant enclosure formed entirely of marine grade 5052-H32 aluminum alloy, with a wall thickness of 1/8 inch. The main housing is a solid sheet construction punched on the sides with a rectangular pattern

for ventilation.\* The mounting plate is formed of powder coated stainless steel and secured into wet concrete or anchor bolts a minimum of 2 inches deep into cured concrete. The center split design allows enclosure sides to swing out, pivoting on the

mounting hardware at each end. The full release locking mechanism is a stainless steel cross bar that includes provisions for a padlock. This enclosure is ASSE 1060 Class III rated.

\*SBBC-60AL does not include punched hole pattern., PE-40AL and PE-60AL includes louvers.