



## Leading Solution for Preventive *Pythium* Control

Subdue Maxx<sup>®</sup> fungicide provides systemic protection against *Pythium* blight, *Pythium* Root Rot, *Pythium* damping-off and yellow tuft (downy mildew). Its efficacy and long residual of up to 21 days make Subdue Maxx an excellent choice as part of an agronomic disease management program.

### Strong Systemic and Contact Activity

Subdue Maxx stops disease growth and prevents the development of disease within the plant. With its systemic activity, it is:

- Absorbed into the leaves and stems where it cannot be washed off by rain
- Absorbed by the roots and translocated throughout the plant

Subdue Maxx has contact activity. Product remains on the surface of the soil and is absorbed into soil particles and organic matter where it controls pathogens.

### Highly Effective Class of Chemistry

Subdue Maxx belongs to a group of fungicides called phenylamides, which have been rigorously tested and are widely used. It is formulated as a micro-emulsion concentrate, providing excellent tank mix compatibility and stability.

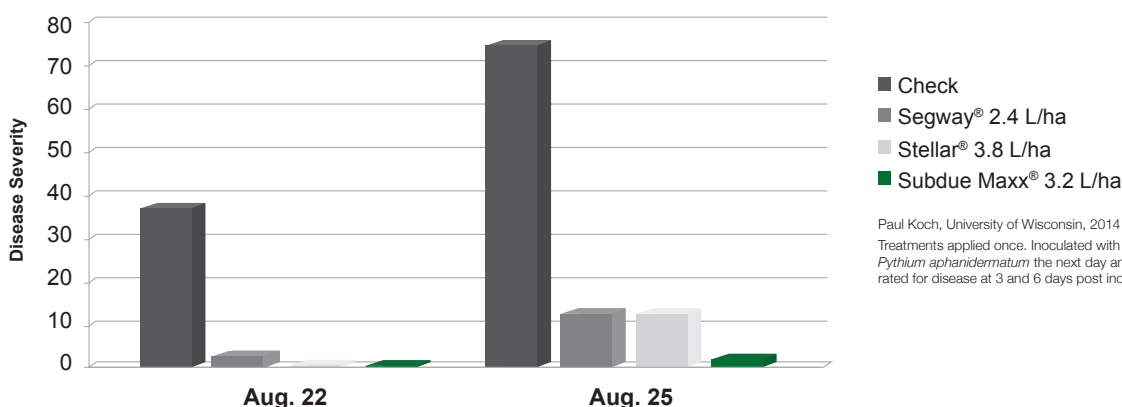
### Optimal Preventive Disease Control

Subdue Maxx provides outstanding control when applied preventively as conditions become favorable for *Pythium* development. Preventive application should be made when temperatures range from 20°C - 30°C and relative humidity is approximately 90%.

The benefits of preventive applications of Subdue Maxx include:

- **Enhanced turf quality:** Preventive control preserves and enhances turf quality. Once turf has been infected with *Pythium*, the infected tiller usually dies and needs to be replaced with another plant.
- **Economical:** Preventive applications are typically more efficient, since curative applications require higher rates at shorter intervals to gain control of the disease. The preventive rate of Subdue Maxx is 1.7 L/ha at 14 to 21 days interval.
- **Excellent disease control:** With both systemic and contact activity, Subdue Maxx is able to stop disease from further germination and will control what is already there. It offers root protection as its solubility penetrates the soil for great root density.

### Evolution of *Pythium* Blight Control



Paul Koch, University of Wisconsin, 2014  
Treatments applied once. Inoculated with *Pythium aphanidermatum* the next day and rated for disease at 3 and 6 days post inoculation.

## Curative Measures for *Pythium* Blight

If applied when *Pythium* is first noticed in hot spots or in locations such as low, wet areas, Subdue Maxx will help prevent the spread of mycelial growth to healthy plant tissues.

Consider applying a combination of Subdue Maxx® and Heritage® or Briskway® fungicide, since it is a challenge to differentiate brown patch mycelia from *Pythium* mycelia in the early stages of infection.



Photos are either the property of Syngenta or used under agreement.

©2018 Syngenta. Important: **Always read and follow label instructions. Some products may not be registered for sale of use in all countries. Please follow local country approved product registration and label guidelines.** The Alliance frame, the Purpose icon and the Syngenta logo are all trademarks of a Syngenta Group Company.

For more information, contact Syngenta Agent or contact Syngenta Technical Support at [GreenCast.SG@Syngenta.com](mailto:GreenCast.SG@Syngenta.com). Syngenta Agro Asia Pacific Pte Ltd. No.1 HarbourFront Ave #03-03 Keppel Bay Tower Singapore 098632.