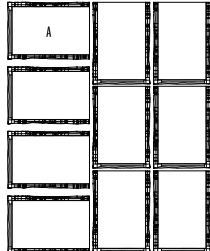




BRANDON 90 & 180 mm

DESCRIPTION: Pillars TEXTURE: Slate

PILLAR PALLET OVERVIEW



COMPATIBLE CAPS

See page 141 for product compatibility.

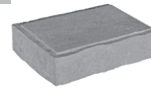
NOTES

See page 136 to 157 for more technical information.

Specifications per pallet		Imperial	Metric
PILLAR 90 mm	Cubing	40 units	40 units
	Approx. Weight	1 625 lbs	737 kg
	Number of rows	4	
	Pillar height	35 $\frac{7}{16}$	900 mm



A

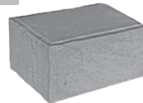


Unit dimensions	in	mm	Units/pallet
Height	3 $\frac{7}{16}$	90	40 units
Depth	9 $\frac{13}{16}$	250	
Length	14 $\frac{3}{16}$	360	

Specifications per pallet		Imperial	Metric
PILLAR 180 mm	Cubing	20 units	20 units
	Approx. Weight	1 636 lbs	742 kg
	Number of rows	2	
	Pillar height	35 $\frac{7}{16}$	900 mm



A



Unit dimensions	in	mm	Units/pallet
Height	7 $\frac{1}{16}$	180	20 units
Depth	9 $\frac{13}{16}$	250	
Length	14 $\frac{3}{16}$	360	

Chestnut Brown



Sandlewood



Champlain Grey



Shale Grey



Onyx Black

