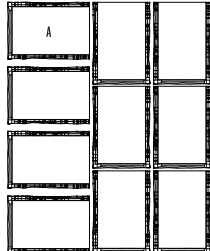




# BRANDON 90 & 180 mm

DESCRIPTION: Pillars TEXTURE: Slate

## PILLAR PALLET OVERVIEW



### COMPATIBLE CAPS

See page 141 for product compatibility.

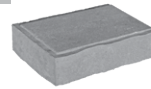
### NOTES

See page 136 to 157 for more technical information.

| Specifications per pallet |                | Imperial          | Metric   |
|---------------------------|----------------|-------------------|----------|
| PILLAR 90 mm              | Cubing         | <b>40 units</b>   | 40 units |
|                           | Approx. Weight | 1 625 lbs         | 737 kg   |
|                           | Number of rows | 4                 |          |
|                           | Pillar height  | 35 $\frac{7}{16}$ | 900 mm   |



A

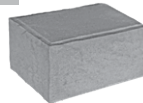


| Unit dimensions | in                | mm  | Units/pallet |
|-----------------|-------------------|-----|--------------|
| Height          | 3 $\frac{7}{16}$  | 90  | 40 units     |
| Depth           | 9 $\frac{13}{16}$ | 250 |              |
| Length          | 14 $\frac{3}{16}$ | 360 |              |

| Specifications per pallet |                | Imperial          | Metric   |
|---------------------------|----------------|-------------------|----------|
| PILLAR 180 mm             | Cubing         | <b>20 units</b>   | 20 units |
|                           | Approx. Weight | 1 636 lbs         | 742 kg   |
|                           | Number of rows | 2                 |          |
|                           | Pillar height  | 35 $\frac{7}{16}$ | 900 mm   |



A



| Unit dimensions | in                | mm  | Units/pallet |
|-----------------|-------------------|-----|--------------|
| Height          | 7 $\frac{1}{16}$  | 180 | 20 units     |
| Depth           | 9 $\frac{13}{16}$ | 250 |              |
| Length          | 14 $\frac{3}{16}$ | 360 |              |

Chestnut Brown



Sandlewood



Champlain Grey



Shale Grey



Onyx Black

