



SienaStone[®] Smooth

1-800-UNILOCK | UNILOCK.COM

UNILOCK[®]
PAVERS & WALLS

SIENASTONE® SMOOTH

CLASSIC



GRANITE BLEND

PRODUCT ATTRIBUTES

Visual Appearance	A more modern, clean looking solution for heavy-duty walls.
Finish	Smooth, linear look.

PRODUCT SPECIFICATIONS



STANDARD 375
 14 $\frac{3}{4}$ " x 47 $\frac{1}{4}$ " x 7"
 375 x 1200 x 180mm

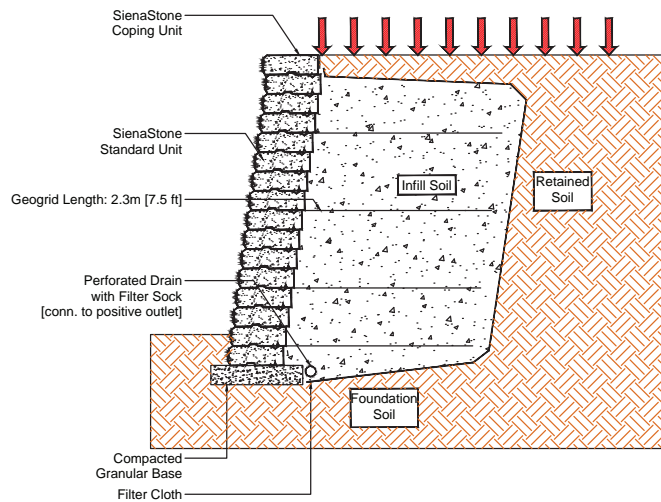


CORNER UNIT 375
 14 $\frac{3}{4}$ " x 38 $\frac{3}{8}$ " x 7"
 375 x 975 x 180mm



COPING 383
 15" x 47 $\frac{1}{4}$ " x 7"
 383 x 1200 x 180mm

GEOGRID WALL SECTION



Cross sections are examples, and must not be used for construction.

TECHNICAL INFORMATION

ASTM C 1372 Standard Specifications for Dry-Cast Segmental Retaining Wall Units

Conforms to:

- C140 for Absorption and Compressive Strength > 3000 PSI
- C1262 for Freeze Thaw Durability <1% mass loss
- C1372 Overall dimensional variations permissible for width, height and length +/-3 mm

Unilock standards exceed 5,000 PSI for SienaStone® Smooth products with:

- 4% absorption avg.
- 5% absorption max.
- Dimensional Accuracy +/-3 mm

Test results available upon request

Meets the U.S. Architectural & Transportation Barrier Compliance Board Slip-Resistance Surfaces Advisory Guidelines

LEED INFORMATION

Materials & Resources: LEED V4:

Building Product Disclosure and Optimization

Sourcing of Raw Materials - Sourcing of Raw Materials and Extraction • **1 point**

Sourcing of Raw Materials - Leadership Extraction Practices • **1 point**

Material Ingredient Reporting - Material Ingredient Reporting • **1 point**

Material Ingredient Reporting - Material Ingredient Optimization • **1 point**

Environmental Product Declaration • **1 point**

If required, summary test data shall be provided with the SRW Design and shall include:

a) SRW Unit shear strength as per ASTM D6916

b) SRW Unit - Geosynthetic Reinforcement connection strength as per ASTM D6638

PRODUCT DATA

Stones & Bundling	Face Feet Per		Linear Feet Per		Units Per		Per Bundle		Lbs Per	
	Bundle	Unit	Bundle	Unit	Bundle	Face Feet	Layers	Sections	Unit	Bundle
Gormley Manufacturing										
Coping	20.93	2.326	36.00	4.000	9	0.43			395	3,555
Corner Unit (double unit)	15.71	5.236	-	-	3	0.19			648	1,944
Step 48"	13.95	2.326	24.00	4.000	6	0.43			540	3,242
Step 72"	6.97	3.484	11.81	5.905	2	0.29			798	1,596
Wall Standard	20.93	2.326	36.00	4.000	9	0.43			394	3,546

Notes: 48" and 72" step - 2 edge details on the same unit (Chamfer and Rounded). Siena Smooth corners are sold together as double units, one left and one right. Engineering services are available. Contact your Unilock Territory Manager or call 1-800-UNILOCK for further information. *For custom options, please contact your Unilock Territory Manager.

APPLICATIONS



Garden Walls & Seat Walls



Retaining Walls



Steps



Refer to the SienaStone Installation Guide for more information.
<https://www.risistone.com/installation-guides/>



Clamps available at Unilock. Please contact your Unilock Territory Manager or call 1-800-UNILOCK.

*Things to know:

For SienaStone®, Unilock, through **Risi Stone Systems International**, can provide preliminary site engineering for most commercial projects. Soils information, site drawings, and loading requirements are some of the information details required in order to provide this preliminary site engineering.

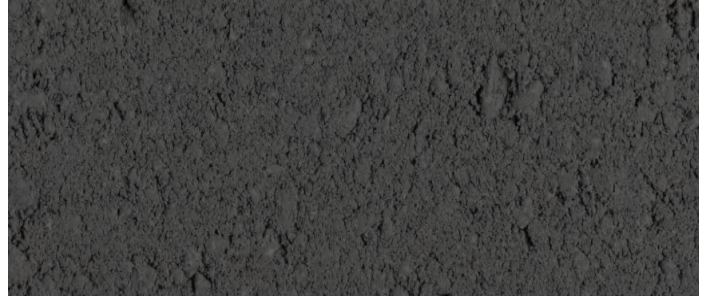
Retaining wall engineering software is also available free of charge. Contact your local Unilock representative for details.

For more information please visit <https://www.risistone.com/product/sienastone/>.

SIENASTONE® SMOOTH STEPS



LIGHT GREY



MIDNIGHT CHARCOAL



TAN

PRODUCT ATTRIBUTES

Visual Appearance	Bold and dramatic. An attractive solution for most heavy-duty step applications.
Finish	Smooth.

PRODUCT SPECIFICATIONS



48" STEP
20 x 47¼ x 7"
500 x 1200 x 180mm



72" STEP
20 x 70¾ x 7"
500 x 1800 x 180mm

2 Edge details available on the same unit (Chamfer and rounded).

Contact your Unilock Territory Manager or call 1-800-UNILOCK for more information.

PRODUCT DATA

Stones & Bundling	Face Feet Per		Linear Feet Per		Units Per		Per Bundle		Lbs Per	
	Bundle	Unit	Bundle	Unit	Bundle	Face Feet	Layers	Sections	Unit	Bundle
Gormley Manufacturing										
Step 48"	13.95	2.326	24.00	4.000	6	0.43			540	3,242
Step 72"	6.97	3.484	11.81	5.905	2	0.29			798	1,596

Notes: 48" and 72" step 2 edge details on the same unit (Chamfer and Rounded). Siena Smooth corners are sold together as double units, one left and one right. Engineering services are available. Contact your Unilock Territory Manager or call 1-800-UNILOCK for further information. *For custom options, please contact your Unilock Territory Manager.