



# U-Cara<sup>®</sup> Multi-Face Wall System

1-800-UNILOCK | UNILOCK.COM

**UNILOCK**  
PAVERS & WALLS



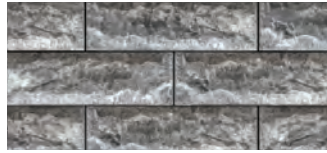
# U-CARA<sup>®</sup> MULTI-FACE WALL SYSTEM

## ENDURACOLOR<sup>™</sup>

### PITCHED FINISH



ALMOND GROVE FUSION



GRANITE FUSION



OPAL BLEND

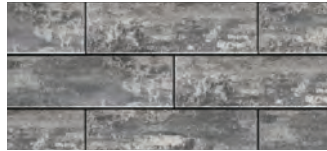


TUSCANY

### SMOOTH FINISH



ALMOND GROVE FUSION



GRANITE FUSION



OPAL BLEND



TUSCANY

### UMBRIANO FINISH - SMOOTH FINISH ONLY



FRENCH GREY



MIDNIGHT SKY



SUMMER WHEAT



WINTER MARVEL

### SERIES<sup>™</sup> FINISH



BLACK GRANITE 3" PANEL ONLY

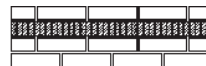
### LAYING PATTERNS



1/2 Running Bond



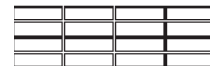
1/2 Running Bond with Linear Accents



1/2 Running Bond with Paver Accents



Mixed Bond



Stacked Bond



Stacked Bond with Accents



1/2 Running Bond with Random Accents



1/3 Running Bond

### PRODUCT ATTRIBUTES

Visual Appearance	The U-Cara <sup>®</sup> Multi-Face Wall System represents a revolution in wall design. Comprised of 2 basic components: Sure Track Backer Blocks- providing dimensionally accurate structure, and U-CARA fascia panels- providing unlimited design options. U-CARA Wall matches select pavers exactly with the same manufacturing and aggregate blends. Superior pairing from vertical to horizontal landscapes.
Finish	Available in Umbriano <sup>®</sup> (Smooth Finish only), Smooth Face, Pitched Face and the 3" Panels are available in Series <sup>™</sup> finish Black Granite.

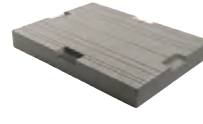
### PRODUCT SPECIFICATIONS



**SURE TRACK STANDARD BACKER**  
6 x 8 x 6"  
150 x 200 x 150mm



**SURE TRACK LARGE BACKER**  
6 x 7 x 12"  
150 x 175 x 300mm



**U-GRIP<sup>™</sup> BASE PAD**  
14 x 19 x 2"  
355 x 482 x 55mm



**SURE TRACK CORNER INSERT**  
L = 2" / 50mm  
40 clips / bag



**6" STANDARD FASCIA HALF PANEL**  
6 x 18½ x 2⅝"  
150 x 466 x 60mm



**STANDARD FASCIA HALF PANEL**  
6 x 9¼ x 2⅝"  
150 x 233 x 60mm



**CLOSED-END FASCIA PANEL**  
6 x 21 x 2⅝"  
150 x 540 x 60mm



**3" FASCIA PANEL**  
63 x 9¼ x 2⅝"  
75 x 233 x 60mm

2 UNIT CORNER BUNDLE

## TECHNICAL INFORMATION

### ASTM C 1372 Standard Specifications for Dry-Cast Segmental Retaining Wall Units

Conforms to:

- C140 for Absorption and Compressive Strength > 3000 PSI
- C1262 for Freeze Thaw Durability <1% mass loss
- C1372 Overall dimensional variations permissible for width, height and length +/-3.2 mm

### Unilock standards exceed 5,500 PSI for U-Cara products with:

- 4% absorption avg.
- 5% absorption max.
- Dimensional Accuracy +/-2 mm

Test results available upon request

## LEED INFORMATION

### Materials & Resources: LEED V4:

Building Product Disclosure and Optimization

Sourcing of Raw Materials - Sourcing of Raw Materials and Extraction • **1 point**

Sourcing of Raw Materials - Leadership Extraction Practices • **1 point**

Material Ingredient Reporting - Material Ingredient Reporting • **1 point**

Material Ingredient Reporting - Material Ingredient Optimization • **1 point**

Environmental Product Declaration • **1 point**

## PRODUCT DATA

Stones & Bundling	Face Feet Per		Linear Feet Per		Units Per		Per Bundle		Lbs Per	
	Bundle	Unit	Bundle	Unit	Bundle	Face Feet	Layers	Sections	Unit	Bundle
<b>Georgetown Manufacturing Umbriano, all Fascia's and Corners / Georgetown Manufacturing Smooth &amp; Pitched / Gormley Manufacturing Sure Track Backers</b>										
Sure Track Standard Backer	34.88	0.323	-	-	108	3.10			23	2,506
Sure Track Large Backer Corner	31.79	0.757	-	-	42	1.32			36	1,509
Sure Track Large Backer Wall	11.87	0.283	-	-	42	3.54			36	1,509
Standard Fascia Panel (Smooth) 3" (75mm)	59.32	0.177	-	-	336	5.66			4	1,453
Standard Fascia Panel (Smooth) 6" (150mm)	61.52	0.732	-	-	84	1.37			18	1,513
Standard Fascia Panel (Pitched) 6" (150mm)	61.52	0.732	-	-	84	1.37			21	1,745
Corner Bundle (Smooth)	54.19				84				30	1,240
Closed-End Fascia Panel	38.94	0.927			42	1.08				
Half Fascia Panel	15.25	0.363			42	2.75				
Corner Bundle (Pitched)	54.19				84				33.69	1,415
Closed-End Fascia Panel	38.94	0.927			42	1.08				
Half Fascia Panel	15.25	0.363			42	2.75				
Universal Coping Bundle			75.90	1.581	48				57	2,747
U-GRIP Base Pad			85.39	1.581	54		9		46	2,500

Notes: Sold in full bundles only. Product is shipped on skids. All measurements are nominal. Contact your Unilock Territory Manager or call 1-800-UNILOCK for further information. \*For custom options, please contact your Unilock Territory Manager.

## APPLICATIONS



Garden Walls & Seat Walls



Steps



Fire Features



Grill Islands



Retaining Walls



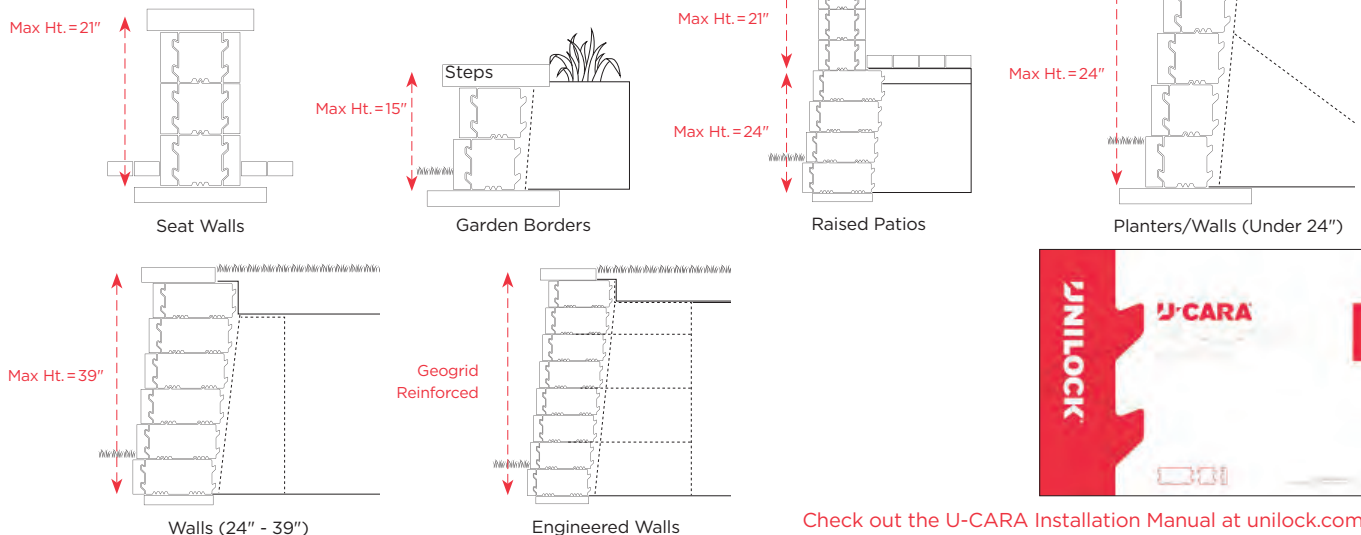
Pillars



Water Features

For coping options, we recommend using LedgeStone, Natural Stone, Universal or Umbriano Coping.

## WALL DETAILS



Check out the U-CARA Installation Manual at [unilock.com](https://contractor.unilock.com/u-cara/)

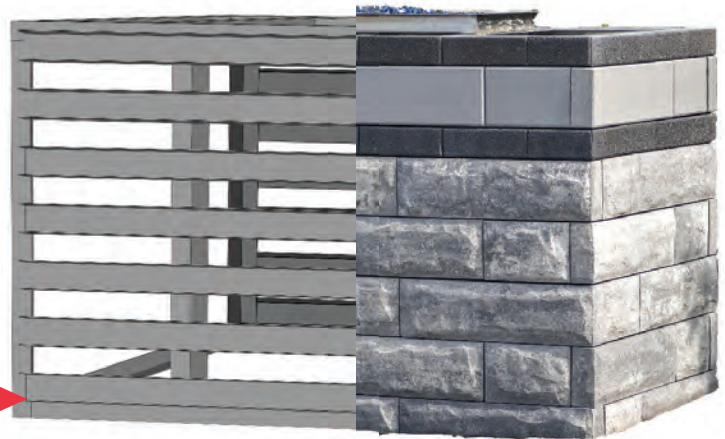
<https://contractor.unilock.com/u-cara/>

# U-CARA<sup>®</sup> MODULAR SYSTEM

## CONSTRUCT CREATIVE VERTICALS WITH SPEED ACCURACY AND STRENGTH

- GRILL ISLANDS
- BACKSPLASHES
- FIRE TABLES
- PILLARS
- BARS

**U-CARA  
MODULAR  
SYSTEM**

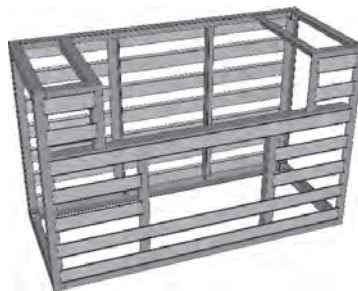


### PRODUCT SPECIFICATIONS



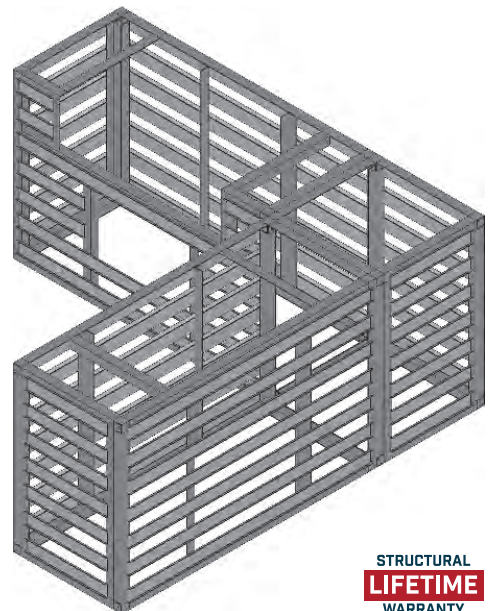
**BASE MODULE**  
Model : UL-BC  
64½ x 27½ x 41⅞"  
1638 x 699 x 1056mm

+



**GRILL MODULE**  
Model : UL-GC  
64½ x 41⅞"  
1638 x 1056mm  
*\*Depth is determined by End Cap*

=



STRUCTURAL  
**LIFETIME**  
WARRANTY

**6063**  
**ALUMINUM**  
LIGHT & STRONG



**CORNER MODULE**  
Model : UL-CC  
27½ x 41⅞"  
699 x 1056mm

+



**STANDARD END CAP**  
Model : UL-ECK  
23½ x 41⅞"  
597 x 1056mm



**LARGE END CAP**  
Model : UL-ECK  
32¾ x 41⅞"  
832 x 1056mm

### FEATURES

- | Aluminum framing
- | Expandable
- | Pre-built panels
- | Fits grills 36" to 42"
- | Precision fabrication
- | Limited lifetime warranty
- | Light-weight

### BENEFITS

- | Easy to learn
- | Build verticals in hours, not days
- | Minimal experience required
- | Moveable
- | Combines seamlessly with U-Cara SureTrack Backer Blocks





Check out the U-CARA Modular System Assembly Guide at [unilock.com](https://contractor.unilock.com/u-cara/)

<https://contractor.unilock.com/u-cara/>

**PILLAR UNIT**  
**Model : UL-PU**  
 18½ x 18½ x 41⅞"  
 470 x 470 x 1056mm

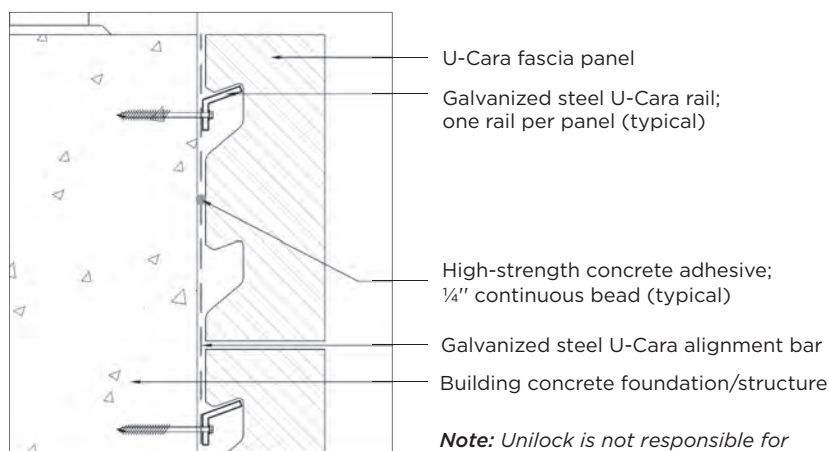
## U-CARA® WALL MOUNT SYSTEM



EASILY CLAD STRUCTURES WITH U-CARA TO COMPLEMENT YOUR HARDSCAPE PROJECT

WITH A SIMPLE 3 STEP PROCESS:

- 1 Mount Alignment Bar
- 2 Attach U-Cara Mount Rails
- 3 Hang U-Cara Fascia Panels



**Note:** Unilock is not responsible for structural strength/integrity of substrates to which the mounting system is attached.



\*Visit [unilock.com](https://unilock.com) to download the U-CARA Modular System Brochure