

# Dura Flo CV

## 17mm Check Valve Dripline

*The Smart Landscape  
Dripline Solution*

### *Faster & Easier to Install*

Longest run lengths in the industry –  
fewer valves, less work

Superior performance and  
lower maintenance

Smart-Loc™ fittings –  
secure leak-free fit

# Features



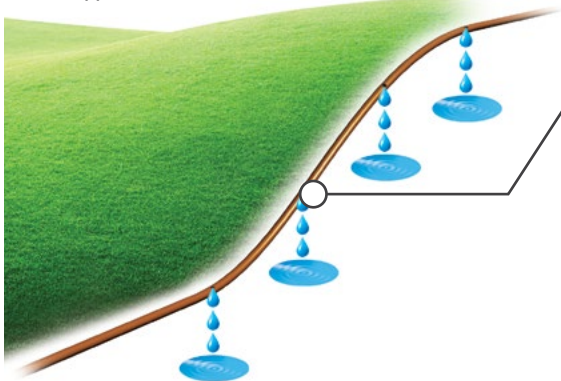
## The Next Generation of Dripline

The new Dura Flo CV Check Valve Dripline combines the best of Dura Flo PC with a check valve. The combination brings the next level of water conservation to your irrigation project.

The dripper features a check valve in combination with anti-siphon capabilities. The check valve prevents low emitter drainage on shut down and the anti-siphon feature eliminates back-siphonage at each emitter. This combination maximizes water efficiency by minimizing water loss and protecting each emitter from clogging and root intrusion. NDS Dura Flo CV is the only product offering this level of efficiency and protection in an all-in-one solution for drip line applications.

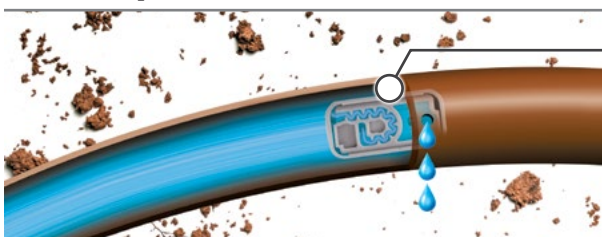
### Check Valve

Hillside Application



- Each emitter opens a 7.5 PSI – Longer run lengths lead to reduced material and labor costs
- Each emitter has a 2 PSI check valve that holds back up to 4.5 ft. of elevation – Prevents low head drainage and keeps the line full of water between irrigation intervals to provide instant watering when the system turns on for each cycle
- Reduces water waste – saves up to 1.39 gallons of water per 100 ft. of tubing

### Anti-siphon

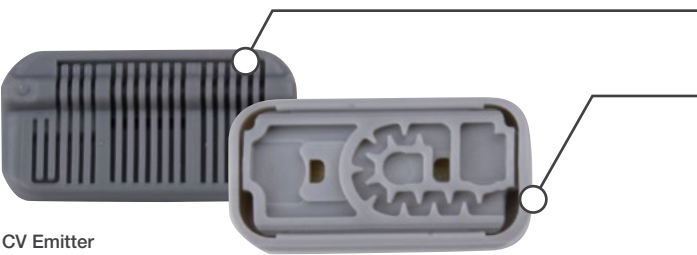


- Each dripper is designed with an anti-siphon feature that prevents the suction of debris into the emitter
- Built-in anti-siphon feature eliminates the need for an air/vacuum relief valve



**Easy to install and requires minimal maintenance!**

## Emitter Specifications



CV Emitter

- With its unique built-in filtration slits and self-cleaning design, clogging is minimized
- Flat, economical, check valve, pressure compensating, anti-siphon emitter maintains uniform flow rates at a wide range of working pressures and various topographies
- Operating range: 7.5 - 60 PSI
- Flow rates: 0.4 gph, 0.6 gph, and 0.9 gph
- Dripper spacing: 12", 18" or 24"

## Pressure Compensation



- Conserves up to 70% of the water used by a conventional sprinkler irrigation system
- Distributes water evenly regardless of pressure fluctuations
- Self-flushing emitter eliminates debris from clogging the system during operation

## Tubing Specifications



- Each roll is shrink wrapped for easy handling and to insure the roll stays together as product is dispensed. Tubing can be easily unwound from center of coil while shrink wrap maintains the remaining coil in place.
- 17mm (.560" ID x .660" OD)  
Also available in 18mm (.600" ID x .700" OD)
- Brown
- Black (MTO)\*
- Purple (MTO)\*
- Brown with Purple Stripe (MTO)\*

\* Made to Order