

DRIPLINE



- Reduces water use by 30% or more compared to overhead irrigation
- Complies with new water conservation legislation
- Highly efficient solution for landscape plantings & turfgrass
- Chemical-free root intrusion protection
- Longest run lengths in the industry
- Comprehensive offering from NDS Pressure Compensating, Non Pressure Compensating, Check Valve, Multiple Tubing size and color options

Dura Flo™ CV – One Dripline Tubing for All Applications

The new Dura Flo CV Check Valve Dripline combines the best of Dura Flo PC with a check valve. The combination brings the next level of water conservation to your irrigation project. The dripper features a check valve in combination with anti-siphon capabilities. The check valve prevents low emitter drainage on shut down and the anti-siphon feature eliminates back-siphonage at each emitter. This combination maximizes water efficiency by minimizing water loss and protecting each emitter from clogging and root intrusion. NDS Dura Flo CV is the only product offering this level of efficiency and protection in an all-in-one solution for drip line applications.

Features

PROFESSIONAL IRRIGATION



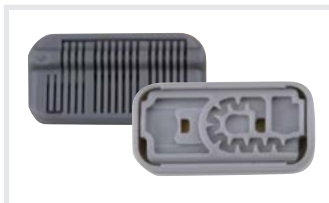
Check Valve

- Each emitter opens a 7.5 PSI – Longer run lengths lead to reduced material and labor costs
- Each emitter has a 2 PSI check valve that holds back up to 4.5 ft. of elevation – Prevents low head drainage & keeps the line full of water between irrigation intervals to provide instant watering when the system turns on for each cycle
- Reduces water waste – saves up to 1.39 gallons of water per 100 ft. of tubing



Anti-Siphon

- Each dripper is designed with an anti-siphon feature that prevents the suction of debris into the emitter
- Built-in anti-siphon feature eliminates the need for an air/vacuum relief valve



Emitter Specifications

- With its unique built-in filtration slits and self-cleaning design, clogging is minimized
- Flat, economical, check valve, pressure compensating, anti-siphon emitter maintains uniform flow rates at a wide range of working pressures and various topographies
- Operating range: 7.5 - 60 PSI • Flow rates: 0.4 gph, 0.6 gph, and 0.9 gph • Dripper spacing: 12", 18" or 24"



Pressure Compensation

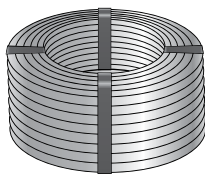
- Conserves up to 70% of the water used by a conventional sprinkler irrigation system
- Distributes water evenly regardless of pressure fluctuations
- Self-flushing emitter eliminates debris from clogging the system during operation

Made in USA

DRIPLINE

17MM Dura Flo™ CV

Shrink Wrapped Packaging



0.660" OD
Inline Check Valve

Part No.	Description	Color	Coil Size/Type	Wt. per 100' (lbs.)	Product Class
SFCV-BR-6212-01S	0.6 gph, 17mm Dura Flo™ Inline Check Valve Dripline (0.560" ID x 0.660" OD), 12" spacing	Brown	100'/ Wrapped Coil	3.3	21DF
SFCV-BR-6212-025S	0.6 gph, 17mm Dura Flo™ Inline Check Valve Dripline (0.560" ID x 0.660" OD), 12" spacing	Brown	250'/ Wrapped Coil	3.3	21DF
SFCV-BR-6212-05S	0.6 gph, 17mm Dura Flo™ Inline Check Valve Dripline (0.560" ID x 0.660" OD), 12" spacing	Brown	500'/ Wrapped Coil	3.3	21DF
SFCV-BR-6412-01S	0.9 gph, 17mm Dura Flo™ Inline Check Valve Dripline (0.560" ID x 0.660" OD), 12" spacing	Brown	100'/ Wrapped Coil	3.3	21DF
SFCV-BR-6412-025S	0.9 gph, 17mm Dura Flo™ Inline Check Valve Dripline (0.560" ID x 0.660" OD), 12" spacing	Brown	250'/ Wrapped Coil	3.3	21DF
SFCV-BR-6412-05S	0.9 gph, 17mm Dura Flo™ Inline Check Valve Dripline (0.560" ID x 0.660" OD), 12" spacing	Brown	500'/ Wrapped Coil	3.3	21DF
SFCV-BR-6418-01S	0.9 gph, 17mm Dura Flo™ Inline Check Valve Dripline (0.560" ID x 0.660" OD), 18" spacing	Brown	100'/ Wrapped Coil	3.3	21DF
SFCV-BR-6418-025S	0.9 gph, 17mm Dura Flo™ Inline Check Valve Dripline (0.560" ID x 0.660" OD), 18" spacing	Brown	250'/ Wrapped Coil	3.3	21DF
SFCV-BR-6418-05S	0.9 gph, 17mm Dura Flo™ Inline Check Valve Dripline (0.560" ID x 0.660" OD), 18" spacing	Brown	500'/ Wrapped Coil	3.3	21DF
SFCV-BR-6424-05S	0.9 gph, 17mm Dura Flo™ Inline Check Valve Dripline (0.560" ID x 0.660" OD), 24" spacing	Brown	500'/ Wrapped Coil	3.3	21DF

Notes: 1,000' Coils are Available Made to Order.

Brown 17mm Tubing with no emitters can be found on page 136 – See A660BR SKUs.

DRIPLINE

17MM Dura Flo™ PC

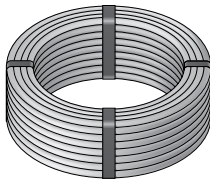
Shrink Wrapped Packaging



PROFESSIONAL IRRIGATION



0.660" OD
Pressure Compensative



0.660" OD
Pressure Compensative

Part No.	Description	Color	Coil Size/Type	Wt. per 100' (lbs.)	Product Class
SFPC-BR-17212-01S	1/2 gph, 17mm Dura Flo™ Pressure Compensating Dripline (0.560" ID x 0.660" OD), 12" spacing	Brown	100'/ Wrapped Coil	4.1	21DF
SFPC-BR-17212-025S	1/2 gph, 17mm Dura Flo™ Pressure Compensating Dripline (0.560" ID x 0.660" OD), 12" spacing	Brown	250'/ Wrapped Coil	4.1	21DF
SFPC-BR-17212-05S	1/2 gph, 17mm Dura Flo™ Pressure Compensating Dripline (0.560" ID x 0.660" OD), 12" spacing	Brown	500'/ Wrapped Coil	4.1	21DF
SFPC-BR-17218-01S	1/2 gph, 17mm Dura Flo™ Pressure Compensating Dripline (0.560" ID x 0.660" OD), 18" spacing	Brown	100'/ Wrapped Coil	3.9	21DF
SFPC-BR-17218-025S	1/2 gph, 17mm Dura Flo™ Pressure Compensating Dripline (0.560" ID x 0.660" OD), 18" spacing	Brown	250'/ Wrapped Coil	3.9	21DF
SFPC-BR-17218-05S	1/2 gph, 17mm Dura Flo™ Pressure Compensating Dripline (0.560" ID x 0.660" OD), 18" spacing	Brown	500'/ Wrapped Coil	3.9	21DF
SFPC-BR-17412-025S	1 gph, 17mm Dura Flo™ Pressure Compensating Dripline (0.560" ID x 0.660" OD), 12" spacing	Brown	250'/ Wrapped Coil	4.1	21DF
SFPC-BR-17412-05S	1 gph, 17mm Dura Flo™ Pressure Compensating Dripline (0.560" ID x 0.660" OD), 12" spacing	Brown	500'/ Wrapped Coil	4.1	21DF
SFPC-PS-17412-05S	1 gph, 17mm Dura Flo™ Pressure Compensating Dripline (0.560" ID x 0.660" OD), 12" spacing	Brown/ Purple Stripe	500'/ Wrapped Coil	4.1	21DF
SFPC-RC-17412-05S	1 gph, 17mm Dura Flo™ Pressure Compensating Dripline (0.560" ID x 0.660" OD), 12" spacing	Purple	500'/ Wrapped Coil	4.1	21DF
SFPC-BR-17412-10	1 gph, 17mm Dura Flo™ Pressure Compensating Dripline (0.560" ID x 0.660" OD), 12" spacing	Brown	1,000'/ Wrapped Coil	3.8	21DF

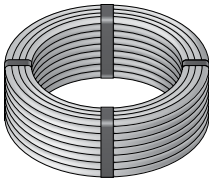
Note: 1,000' Coils are Available Made to Order.

DRIPLINE

16MM Dura Flo™ PC



0.640" OD
Pressure Compensative



0.640" OD
Pressure Compensative

Part No.	Description	Color	Coil Size/Type	Wt. per 100' (lbs.)	Product Class
SFPC-BR-6212-025	1/2 gph, 16mm Dura Flo™ Pressure Compensating Dripline (0.550" ID x 0.640" OD), 12" spacing	Brown	250'/Coil	4.0	21DF
SFPC-BR-6212-05	1/2 gph, 16mm Dura Flo™ Pressure Compensating Dripline (0.550" ID x 0.640" OD), 12" spacing	Brown	500'/Coil	4.0	21DF
SFPC-BL-6412-01	1 gph, 16mm Dura Flo™ Pressure Compensating Dripline (0.550" ID x 0.640" OD), 12" spacing	Black	100'/Coil	4.0	21DF
SFPC-BR-6412-01	1 gph, 16mm Dura Flo™ Pressure Compensating Dripline (0.550" ID x 0.640" OD), 12" spacing	Brown	100'/Coil	4.0	21DF
SFPC-BR-6412-025	1 gph, 16mm Dura Flo™ Pressure Compensating Dripline (0.550" ID x 0.640" OD), 12" spacing	Brown	250'/Coil	4.0	21DF
SFPC-BR-6412-05	1 gph, 16mm Dura Flo™ Pressure Compensating Dripline (0.550" ID x 0.640" OD), 12" spacing	Brown	500'/Coil	4.0	21DF
SFPC-BR-6418-01	1 gph, 16mm Dura Flo™ Pressure Compensating Dripline (0.550" ID x 0.640" OD), 18" spacing	Brown	100'/Coil	3.8	21DF
SFPC-BR-6418-025	1 gph, 16mm Dura Flo™ Pressure Compensating Dripline (0.550" ID x 0.640" OD), 18" spacing	Brown	250'/Coil	3.8	21DF
SFPC-BL-6418-05	1 gph, 16mm Dura Flo™ Pressure Compensating Dripline (0.550" ID x 0.640" OD), 18" spacing	Black	500'/Coil	3.8	21DF
SFPC-BR-6418-05	1 gph, 16mm Dura Flo™ Pressure Compensating Dripline (0.550" ID x 0.640" OD), 18" spacing	Brown	500'/Coil	3.8	21DF

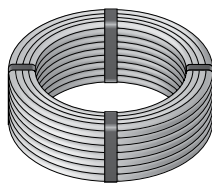
PROFESSIONAL IRRIGATION

DRIPLINE

18MM Dura Flo™ PC



0.700" OD
Pressure Compensative

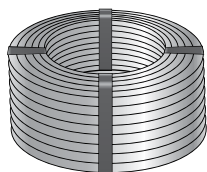


0.700" OD
Pressure Compensative

Part No.	Description	Color	Coil Size/Type	Wt. per 100' (lbs.)	Product Class
SFPC-BL-7212-01	1/2 gph, 18mm Dura Flo™ Pressure Compensating Dripline (0.600" ID x 0.700" OD), 12" spacing	Black	100'/Coil	4.7	21DF
SFPC-BR-7212-01	1/2 gph, 18mm Dura Flo™ Pressure Compensating Dripline (0.600" ID x 0.700" OD), 12" spacing	Brown	100'/Coil	4.7	21DF
SFPC-BL-7212-05	1/2 gph, 18mm Dura Flo™ Pressure Compensating Dripline (0.600" ID x 0.700" OD), 12" spacing	Black	500'/Coil	4.7	21DF
SFPC-BR-7218-05	1/2 gph, 18mm Dura Flo™ Pressure Compensating Dripline (0.600" ID x 0.700" OD), 18" spacing	Brown	500'/Coil	4.5	21DF
SFPC-BL-7412-01	1 gph, 18mm Dura Flo™ Pressure Compensating Dripline (0.600" ID x 0.700" OD), 12" spacing	Black	100'/Coil	4.7	21DF
SFPC-BR-7412-01	1 gph, 18mm Dura Flo™ Pressure Compensating Dripline (0.600" ID x 0.700" OD), 12" spacing	Brown	100'/Coil	4.7	21DF
SFPC-BL-7412-05	1 gph, 18mm Dura Flo™ Pressure Compensating Dripline (0.600" ID x 0.700" OD), 12" spacing	Black	500'/Coil	4.7	21DF
SFPC-BR-7412-05	1 gph, 18mm Dura Flo™ Pressure Compensating Dripline (0.600" ID x 0.700" OD), 12" spacing	Brown	500'/Coil	4.7	21DF
SFPC-BL-7418-05	1 gph, 18mm Dura Flo™ Pressure Compensating Dripline (0.600" ID x 0.700" OD), 18" spacing	Black	500'/Coil	4.5	21DF
SFPC-BR-7418-05	1 gph, 18mm Dura Flo™ Pressure Compensating Dripline (0.600" ID x 0.700" OD), 18" spacing	Brown	500'/Coil	4.5	21DF

PROFESSIONAL IRRIGATION

18MM Dura Flo™ CV



0.700" OD
Inline Check Valve

Part No.	Description	Color	Coil Size/Type	Wt. per 100' (lbs.)	Product Class
SFCV-BR-7212-01	0.6 gph, 18mm Dura Flo™ Inline Check Valve Dripline (0.600" ID x 0.700" OD), 12" spacing	Brown	100'/Coil	3.3	21DF
SFCV-BR-7412-01	0.9 gph, 18mm Dura Flo™ Inline Check Valve Dripline (0.600" ID x 0.700" OD), 12" spacing	Brown	100'/Coil	3.3	21DF
SFCV-BR-7412-025	0.9 gph, 18mm Dura Flo™ Inline Check Valve Dripline (0.600" ID x 0.700" OD), 12" spacing	Brown	250'/Coil	3.3	21DF
SFCV-BR-7412-10	0.9 gph, 18mm Dura Flo™ Inline Check Valve Dripline (0.600" ID x 0.700" OD), 12" spacing	Brown	1,000'/Coil	3.3	21DF
SFCV-BR-7218-01	0.9 gph, 18mm Dura Flo™ Inline Check Valve Dripline (0.600" ID x 0.700" OD), 18" spacing	Brown	100'/Coil	3.3	21DF
SFCV-BR-7218-025	0.9 gph, 18mm Dura Flo™ Inline Check Valve Dripline (0.600" ID x 0.700" OD), 18" spacing	Brown	250'/Coil	3.3	21DF

DRIPLINE – TECHNICAL INFORMATION

17MM Dura Flo™ CV Maximum Recommended Length of Run (Feet)

Initial Pressure	12" SPACING			18" SPACING			24" SPACING		
	0.4 GPH	0.6 GPH	0.9 GPH	0.4 GPH	0.6 GPH	0.9 GPH	0.4 GPH	0.6 GPH	0.9 GPH
15 PSI	261'	221'	161'	347'	292'	214'	420'	354'	260'
20 PSI	357'	300'	221'	477'	399'	294'	576'	488'	358'
25 PSI	422'	354'	259'	563'	471'	346'	684'	575'	421'
30 PSI	471'	395'	289'	629'	526'	385'	765'	642'	471'
35 PSI	514'	429'	314'	687'	571'	418'	835'	699'	512'
40 PSI	550'	460'	336'	735'	618'	449'	893'	748'	549'
45 PSI	582'	486'	355'	779'	650'	473'	947'	791'	581'
50 PSI	610'	508'	372'	818'	677'	493'	995'	830'	610'

Discharge Rates (GPH)

Model	Part No.	10 PSI	15 PSI	20 PSI	25 PSI	30 PSI	40 PSI	60 PSI	80 PSI
Dura Flo™ JR Mini Dripplerline	DS 20			1.7 gph	1.9 gph	2.0 gph	2.2 gph	2.5 gph	2.1 gph
	DS 30			3.0 gph	3.3 gph	3.6 gph	3.6 gph	3.6 gph	3.0 gph
Dura Flo™ PC Dripplerline	SFJR-XX-XX-XX	0.39 gph	0.47 gph	0.56 gph	0.63 gph	0.69 gph			
	SFPC-XX-62XX-XX	0.45 gph	0.50 gph	0.50 gph	0.50 gph	0.50 gph	0.50 gph	0.45 gph	
	SFPC-XX-64XX-XX	0.75 gph	0.90 gph	0.90 gph	0.90 gph	0.90 gph	0.85 gph	0.80 gph	
	SFPC-XX-68XX-XX	1.40 gph	1.60 gph	1.65 gph	1.65 gph	1.65 gph	1.65 gph	1.65 gph	
	SFPC-XX-72XX-XX	0.50 gph	0.55 gph	0.55 gph	0.55 gph	0.55 gph	0.55 gph	0.50 gph	
	SFPC-XX-74XX-XX	0.80 gph	0.95 gph	0.95 gph	0.95 gph	0.95 gph	0.95 gph	0.85 gph	
	SFPC-XX-78XX-XX	1.50 gph	1.75 gph	1.80 gph	1.80 gph	1.80 gph	1.80 gph	1.80 gph	
Dura Flo™ Dripplerline	SFPC-XX-202XX-XX	0.43 gph	0.45 gph	0.48 gph	0.48 gph	0.49 gph	0.49 gph	0.45 gph	
	SFPC-XX-204XX-XX	0.80 gph	0.83 gph	0.83 gph	0.86 gph	0.88 gph	0.93 gph	0.94 gph	
	SFPC-XX-208XX-XX	1.55 gph	1.62 gph	1.62 gph	1.65 gph	1.65 gph	1.62 gph	1.77 gph	
	SF-XX-62XX-XX	0.36 gph	0.40 gph	0.51 gph	0.60 gph	0.68 gph	0.78 gph		
	SF-XX-64XX-XX	0.63 gph	0.78 gph	0.92 gph	1.08 gph	1.21 gph	1.41 gph		
Mini Flo™ Emitter	SF-XX-68XX-XX	1.26 gph	1.58 gph	1.79 gph	2.00 gph	2.20 gph	2.54 gph		
	SF-XX-72XX-XX	0.40 gph	0.48 gph	0.56 gph	0.66 gph	0.75 gph	0.86 gph		
	SF-XX-74XX-XX	0.71 gph	0.86 gph	1.01 gph	1.19 gph	1.35 gph	1.56 gph		
Laser Drilled Soaker Hose	SF-XX-78XX-XX	1.40 gph	1.75 gph	1.98 gph	2.22 gph	2.44 gph	2.82 gph		
	MIL 5	0.51 gph	0.63 gph	0.73 gph	0.81 gph				
	MIL 10	0.86 gph	1.06 gph	1.22 gph	1.36 gph				
	ALT 6/12	1.0 gph	1.30 gph	1.6 gph					

PROFESSIONAL IRRIGATION

Maximum Recommended Length of Run (Feet)

Model	Nominal Flow Rate	Initial Pressure	I.D. of Tubing (inches)									
			.520"	.600"	.520"	.600"	.520"	.600"	.520"	.600"	.520"	.600"
			Spacing Between Emitters (inches)									
		18"		24"		36"		48"		60"		
PC Plus™ Emitter	0.5 gph	20 PSI	350'	440'	415'	535'	530'	68'	640'	820'	740'	970'
		30 PSI	460'	590'	550'	710'	700'	900'	850'	1,090'	1,000'	1,290'
		40 PSI	540'	695'	640'	825'	840'	1,080'	1,020'	1,310'	1,160'	1,500'
	1.0 gph	20 PSI	220'	280'	265'	340'	340'	440'	410'	530'	480'	620'
		30 PSI	290'	375'	350'	450'	450'	580'	540'	690'	630'	820'
		40 PSI	340'	440'	410'	530'	540'	690'	650'	840'	750'	965'
	2.0 gph	20 PSI	160'	200'	190'	240'	240'	305'	300'	370'	350'	435'
		30 PSI	210'	265'	255'	320'	325'	405'	390'	490'	460'	575'
		40 PSI	250'	310'	300'	370'	380'	475'	460'	575'	540'	675'

DRIPLINE – TECHNICAL INFORMATION

Maximum Recommended Length of Run (Feet)

Model	Nominal Flow Rate	Initial Pressure	Spacing Between Emitters (inches)																	
			12"			18"			24"			36"			48"			60"		
			Tubing Size																	
			.630" OD	.710" OD	.830" OD	.630" OD	.710" OD	.830" OD	.630" OD	.710" OD	.830" OD	.630" OD	.710" OD	.830" OD	.630" OD	.710" OD	.830" OD	.630" OD	.710" OD	.830" OD
Dura Flo™ Emitter-line	0.5 gph	20 PSI	180'	240'	N/A	250'	340'	N/A	300'	420'	N/A	400'	550'	N/A	490'	680'	N/A	570'	790'	N/A
	1.0 gph	20 PSI	130'	180'	N/A	170'	240'	N/A	210'	300'	N/A	270'	390'	N/A	340'	480'	N/A	390'	550'	N/A
	2.0 gph	20 PSI	95'	120'	N/A	125'	150'	N/A	150'	190'	N/A	200'	250'	N/A	250'	310'	N/A	285'	360'	N/A
Dura Flow PCT™ Emitter-line	0.5 gph		.640" OD	.700" OD	.830" OD	.640" OD	.700" OD	.830" OD	.640" OD	.700" OD	.830" OD	.640" OD	.700" OD	.830" OD	.640" OD	.700" OD	.830" OD	.640" OD	.700" OD	.830" OD
		15 PSI	180'	210'	315'	255'	300'	495'	325'	380'	560'	455'	525'	780'	560'	650'	950'	655'	760'	1,090'
		25 PSI	265'	315'	460'	380'	450'	660'	485'	570'	825'	675'	780'	1,160'	850'	975'	1,420'	990'	1,140'	1,630'
		35 PSI	325'	380'	565'	460'	540'	790'	580'	685'	990'	810'	940'	1,400'	1,020'	1,175'	1,700'	1,190'	1,375'	1,950'
	45 PSI	365'	430'	625'	520'	610'	890'	660'	775'	1,120'	920'	1,065'	1,580'	1,150'	1,330'	1,930'	1,345'	1,555'	2,200'	
	1.0 gph	15 PSI	130'	155'	215'	185'	220'	315'	240'	280'	380'	330'	380'	540'	410'	475'	660'	480'	555'	755'
		25 PSI	195'	230'	330'	280'	330'	460'	355'	420'	575'	485'	570'	840'	615'	715'	970'	720'	835'	1,080'
		35 PSI	240'	280'	395'	335'	395'	560'	430'	505'	690'	585'	690'	970'	740'	860'	1,190'	865'	1,005'	1,360'
		45 PSI	265'	315'	445'	380'	450'	625'	485'	570'	775'	660'	780'	1,100'	835'	975'	1,335'	975'	1,140'	1,530'
	2.0 gph	15 PSI	85'	100'	150'	125'	145'	200'	155'	180'	250'	215'	245'	350'	260'	305'	430'	300'	355'	495'
		25 PSI	125'	150'	215'	180'	215'	300'	230'	270'	380'	315'	365'	520'	400'	455'	640'	470'	530'	730'
		35 PSI	150'	180'	265'	215'	255'	330'	270'	320'	460'	380'	440'	635'	480'	550'	775'	560'	645'	890'
45 PSI		170'	200'	295'	250'	290'	410'	305'	360'	510'	430'	500'	715'	540'	625'	875'	630'	730'	1,000'	

PROFESSIONAL IRRIGATION

Model	Nominal Flow Rate	Initial Pressure	Spacing Between Emitters (inches)				
			12"	18"	24"	30"	36"
Mini Flo™ Emitter	0.5 gph	20 PSI	20'	25'	30'	35'	40'
	1.0 gph	20 PSI	12'	15'	18'	21'	24'

Model	Nominal Flow Rate	Spacing	Maximum Run	Model	Nominal Flow Rate	Spacing	Maximum Run
Dura Flo™ JR Mini Dripperline	0.5 gph	6"	19 ft.	Laser Drilled Soaker Hose (1/4")	1.0 gph	6"	12 ft.
	0.5 gph	12"	33 ft.		1.0 gph	12"	20 ft.

Calculations are based on: 1. No elevation changes over length of run. 2. Maximum allowable variation in discharge rate of ±7.5%.

Refer to Technical Specifications Document for Flowcharts and Run Length Information at ndspro.com/specifications

DRIPLINE – TECHNICAL INFORMATION

The Following Formula Should be Used to Calculate Application Rates

$$\text{Application Rate (inches per hour)} = \frac{231 \times \text{Emitter Flow Rates (gph)}}{\text{Spacing between Poly Laterals (inches)} \times \text{Spacing between Emission Device (inches)}}$$

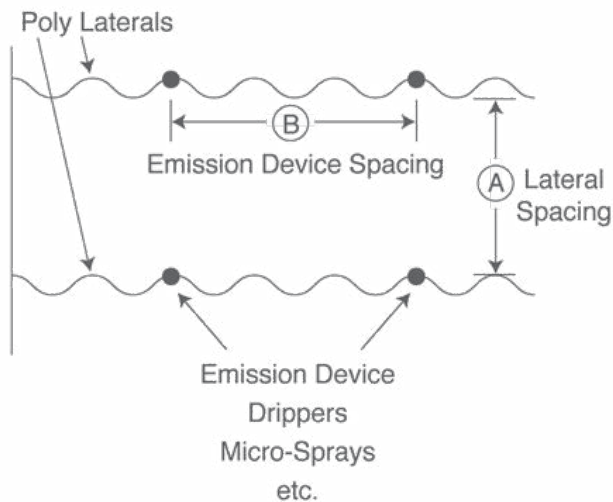
(A)
(B)

Example

Emitter Flow Rate = 1 gph

Spacing between Emission Device = 18"

Spacing between Poly Laterals = 16"



Question

What is the application rate?

Solution

$$\text{Application Rate} = \frac{231 \times 1}{16 \times 18} = 0.80\text{"/hr}$$

Drip Application Rates (Inches/Hour) – Based on Nominal Flow Rates

Emitter Spacing	1/2 gph										
	Spacing between Poly Laterals										
	12"	13"	14"	15"	16"	17"	18"	19"	20"	22"	24"
12"	.80	.74	.69	.64	.60	.57	.53	.51	.48	.44	.40
18"	.53	.49	.46	.43	.40	.38	.36	.34	.32	.29	.27
24"	.40	.37	.34	.32	.30	.28	.26	.25	.24	.22	.20

Emitter Spacing	1 gph										
	Spacing between Poly Laterals										
	12"	13"	14"	15"	16"	17"	18"	19"	20"	22"	24"
12"	1.60	1.48	1.38	1.28	1.20	1.14	1.06	1.02	.96	.88	.80
18"	1.07	.99	.92	.86	.80	.75	.71	.68	.64	.58	.53
24"	.80	.74	.69	.64	.60	.57	.53	.51	.48	.44	.40

Emitter Spacing	2 gph										
	Spacing between Poly Laterals										
	12"	13"	14"	15"	16"	17"	18"	19"	20"	22"	24"
12"	3.20	2.96	2.75	2.56	2.40	2.28	2.12	2.04	1.92	1.76	1.60
18"	2.14	1.98	1.84	1.72	1.60	1.50	1.42	1.36	1.28	1.16	1.06
24"	1.60	1.48	1.38	1.28	1.20	1.14	1.06	1.02	.96	.88	.80