

LIGHT BAR

DESCRIPTION

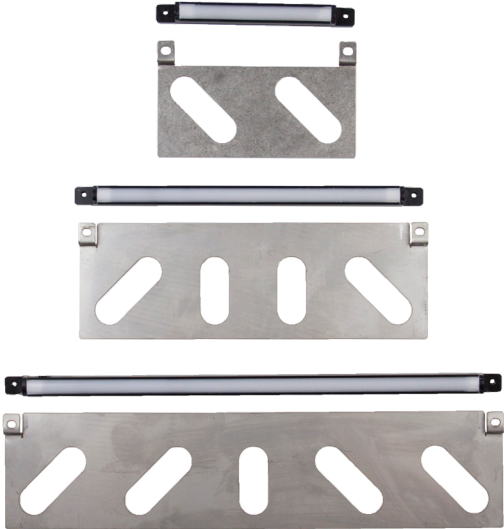
The Light Bar is easy to install and its rugged construction and anodized aluminum rail makes it a great fit for high-traffic areas. Light Bars are dimmable with most magnetic transformers and the frosted design offers continuous light.

Optional light bar shields in Copper or Stainless Steel are available in Small and Medium only.

NOT for installation within 10 ft of swimming pool per NEC Article 411-2
 ATTENTION: Operating voltage range is 8-18 Volts AC/DC

LIGHT BAR

Size	Small	Medium	Large
Wattage	1.5	2.5	4
Lumens	110	200	300
Length (inches)	5.125"	9.0"	12.875"
Kelvin Temperature	2700	2700	2700
Operating Range	8-18 VAC	8-18 VAC	8-18 VAC
CRI	85	85	85
IP	65	65	65
Warranty (years)	5	5	5



Part Number: **BRI-XX-LED-X**

Light Bar=LB Size
 Mounting |
 Bracket=MB

Optional Light Bar Shield (S & M only)

Part Number: **LBS-X-XXXXXX**

Size |
 Material
 Copper
 Steel

