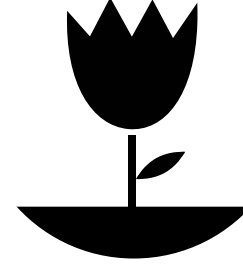




TOTAL LANDSCAPE MIX

PREMIUM SOIL FOR PLANTING TURF | ORNAMENTALS | TREES



SOIL AMENDMENT WITH CERTIFIED COMPOST

- Improves Poor Soils
- Preserves Water Quality
- Provides a Carbon and Energy Source
- Aids in Plant Growth
- Retains Moisture
- Increases Water Infiltration Rates

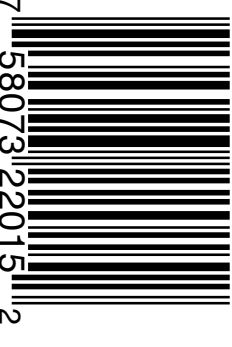
The Smart Choice of Professionals

Net Weight 1.5 cu.ft. (42 L)
#22-TLM-015



LESCO | TOTAL LANDSCAPE MIX

LESCO | TOTAL LANDSCAPE MIX



LESCO | TOTAL LANDSCAPE MIX

Net Weight 1.5 cu. ft. (42 L)

#22-TLM-015

LESCO® warrants to the extent of the purchase price that products sold are as described in the container when recognized trademarks, LESCO® DISCLAIMS ALL OTHER WARRANTIES, EXPRESS OR IMPLIED, INCLUDING WARRANTIES OF MERCHANTABILITY OR FITNESS FOR A PARTICULAR PURPOSE. Purchaser shall be deemed to have accepted the product as delivered (including breach of warranty) and the limited to a refund of the purchase price. LESCO, INC. 1385 East 39th St., Cleveland, Ohio 44114-1849. LESCO® is a registered trademark. LESCO® has the label for consequential damages, including lost profits.

LIMITED WARRANTY AND LIMITATION OF LIABILITY
The rates are general recommendations for use. Please consult with a horticultural professional or extension agent if you have any questions.

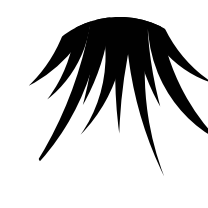
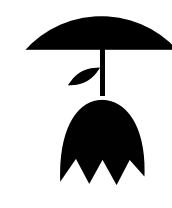
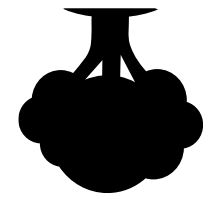


This soil amendment is rich in composted matter containing beneficial microbes--the basis for plant growth and animal life--on which we all depend upon for sustenance. Total Landscape Mix helps maintain soil in an uncompacted condition thus increasing the rate of water filtration and facilitating penetration of plant roots.

Total Landscape Mix is the all-natural landscape soil amendment derived from forest by-products containing 30% ERTH Food Certified Compost.

PRODUCT STATEMENT

PREMIUM SOIL FOR PLANTING TURF | ORNAMENTALS | TREES



- Use Instructions:
- TURF ESTABLISHMENT | SOD INSTALLATION | SOIL RENOVATION
Incorporate 1 to 3 inches of Total Landscape Mix into the top 4 to 6 inches of soil (3-9 cu. yds./1000 sq. ft.). Use higher rate for less fertile soil.
 - TURF MAINTENANCE | TOPDRESSING
Broadcast 1/3 inch of Total Landscape Mix (approximately 1 cu. yd./1000 sq.ft.) on established turf and rake in. For best results aerate soil prior to topdressing.
 - FLOWER BEDS | GROUND COVERS
Mix or rototill 1 to 3 inches of Total Landscape Mix into soil prior to planting.
 - TREE AND SHRUB PLANTING
Uniformly mix Total Landscape Mix with existing soil at a rate of 25% Total Landscape Mix to 75% soil as backfill for trees and shrubs.
 - SHRUB MAINTENANCE | MULCHING
Spread Total Landscape Mix 2 to 3 inches thick over planting areas or individual plant pits.

TOTAL LANDSCAPE MIX

