



REGULATION PLASTIC CUP

Durable bright white plastic cup featuring minimum taper for a snug fit, both on the course and on the practice green. Meets all USGA regulations.

920 6 in. (15 cm) Regulation Cup



PRACTICE GREEN PLASTIC CUP

Durable bright white plastic cup featuring minimum taper for a snug fit. Meets all USGA regulations.

940 4 in. (10 cm) Practice Cup



ALUMINUM CUP

Our classic – it's die-cast oversize, then machined to dimensions that minimize "wobble" in the hole. Surfaces anodized and dichromated for ultimate corrosion protection. The cup's vertical surfaces are powder-coated bright white and the bottom is unpainted so there's no paint to chip. Meets all USGA regulations.

930 6 in. (15 cm) Regulation Cup

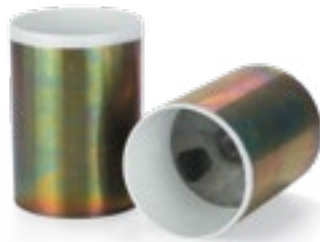
See page 28 for pink flagstick and page 34 for pink flag.



PINK CUP

Designed to coordinate with pink flagsticks and flags for breast cancer awareness or other pink-themed events.

930-99 6 in. (15 cm) Regulation Cup



ZINC CUP

Same characteristics as the aluminum model but molded in zinc for improved overall strength. Zinc also increases weight of cup for more stability. Inside of cup powder-coated white. Meets all USGA regulations.

937 6 in. (15 cm) Regulation Cup



CUP STOP

By inserting this rigid plastic disk into the bottom of the cup, the cup will not "sink" into the green once it is set. Also prevents flagsticks from "bottoming out." Sold in sets of 18.

932 Use with Par Aide cup model numbers 920, 930 and 935 only.



Key Feature

The 360° Hole Painter™ is the easiest and most effective way to paint the top 1 in. above the cup bright white. See page 72 for full details.