

BLAZING™ TwiztLOC

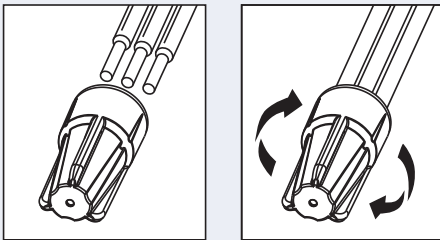
Corrosion Resistant Low Voltage Connectors



INSTALLATION INSTRUCTIONS

IMPORTANT: Turn off power before installing or removing connector. Product to be used in accordance with local and national codes.

- Strip wires 1/2" (12.7mm) and align frayed strands and conductors. Pre-twisting of wires unnecessary.
- Hold stripped wire ends evenly together. Lead stranded wire(s) beyond solid wire ends by approximately 1/16" (1.6mm).
- Firmly hold wire combination together and insert it through the center of the cap on the end of the connector.
- Continue to push and twist (clockwise) until hand tight – 1 to 2 wire wraps should be visible. Do not over torque.
- Wipe any excess silicone in and around the wires. Do not reuse.



Selected 30V Wire Combinations
For use with solid and/or stranded combinations.

2-5 #18	2 #14 w/1 #18	3 #16
2 #12 w/1 #18	2 #14 w/1 #16	
2 #12 w/1 #16	3 #14	
3 #12	2 #16 w/1 #18	

Contact factory for a complete list of wire combinations at 800.633.0232.

Blazing™ TwiztLoc TLC20 Gray/Yellow

SKU #	Selling Unit
TLC20	Bottle of 100
TLC20-15	Bag of 15

PRODUCT SPECIFICATIONS & MEASUREMENTS

Max. Voltage: 30V max. building wire, 10AMPS
 Connector Size: 1.5" x .675"
 Wire Type: Copper/Copper
 Wire Range: Min #18/Max #12
 Temperature Rating: 90°C (194°F)
 Silicone Sealant Temperature: -40°F to 400°F

Measurements (Inches):

A - 1.44
 B - 0.675
 C - 0.487

