



PRO-TRADE®

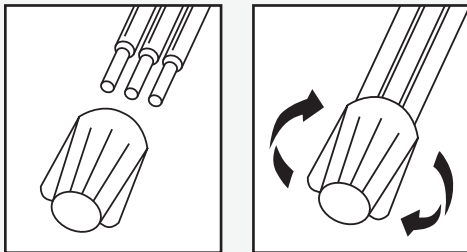
For use with Irrigation or Outdoor Lighting Systems



INSTALLATION INSTRUCTIONS

IMPORTANT: Turn off power before installing or removing connector. Product to be used in accordance with local and national codes.

1. Strip wires 3/4" (19.1mm).
2. Align any frayed strands or conductors.
3. Pre-twisting unnecessary. Place stripped wires together with ends of insulation even.
4. Twist connector onto wires pushing firmly until hand-tight. Do not over torque.
5. Wipe sealant in and around conductors and connector opening while tightening. Do not reuse.



Black/Blue Waterproof Connectors

Part #	Selling Unit
PT-WC4-BKBL-10	Bag of 10

PRODUCT SPECIFICATIONS & MEASUREMENTS

Max. Voltage: 600V max. building wire (1000V max. signs or luminaires)

Connector Size: 1 1/4" x 13/16"

Wire Type: Copper/Copper

Wire Range: Min #14/Max #6

Temperature Rating: 105°C (221°F)

Silicone Sealant Temperature: -45°F to 400°F

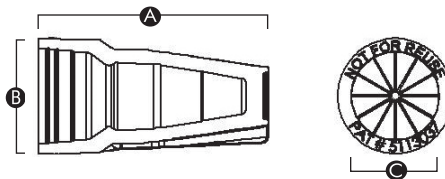
UL Designation: LWP*

Measurements (Inches):

A - 1.64

B - 0.82

C - 0.63



UL Listed as a Sealed Wire Connector. For use in dry, damp, wet locations below or above grade when used in an enclosure. For use in direct bury applications when operating at 30 volts or less.

Selected 600V Wire Combinations

For use with solid and/or stranded combinations.

2 #8	1 #10 w/3-5 #14	3 #10 w/1-2 #18
2-3 #10	2 #10 w/1-2 #12	4 #12 w/1 #14
3-5 #12	2 #10 w/1-3 #14	1 #10 w/2-3 #12
3 #10 w/1 #14		

