



Proxy[®]

Product information sheet

- // Active Ingredient: Ethephon
- // Formulation: Soluble liquid
- // Signal Word: Danger
- // Activity: Plant growth regulator

Best Uses

- // Suppresses seedheads in *Poa annua*
- // Suppress the growth of labeled cool-season grasses

Attributes

- // Foliarly absorbed, and is most effective on actively growing healthy turf
- // Rainfast within 2 hours
- // Promotes turf that is denser, tighter-knit and more playable
- // Seedhead suppression plus improved turf quality when tank-mixed with Stressgard[®] - containing products or Primo Maxx[®]

Key Strengths

- // *Poa annua* seedhead suppression
- // Regulates growth of desirable grasses in cool-season turf, especially roughs and tall grass

How to Apply

- // For best results, apply in sufficient volume of water to provide uniform coverage
- // For maximum performance, delay mowing until the day after application
- // For optimum control of *Poa annua*, make first application in the fall when mowing slows, followed by at least two spring applications
- // A period of 2-3 weeks after application is required for maximum performance
- // Repeat applications are needed on *Poa annua*, but wait a minimum of two weeks after the previous application
- // Follow other general recommendations and precautions on the label and in Green Solutions Update: Managing Seedheads in Annual Bluegrass



Poa annua

Application	Sites	Rate (per 1,000 sq ft)	Spray Vol. (per 1,000 sq ft)
<p>Poa annua seedhead suppression:</p> <p>Reapplication interval: 2 weeks or greater for all labeled grasses</p>	<p>Golf course turf including greens, tees, fairways and roughs</p> <p>Commercial turfgrasses including bentgrass, Kentucky bluegrass, perennial ryegrass, tall and fine fescue</p>	5.0 fl oz	1.0 - 2.0 gal

Turfgrass growth regulation reapplication intervals:

- // Kentucky bluegrass - 7 weeks
- // Perennial ryegrass - 7 weeks
- // Tall and fine fescue - 4 weeks
- // Bentgrass - 4 weeks

Golf course turf including greens,
tees, fairways and roughs

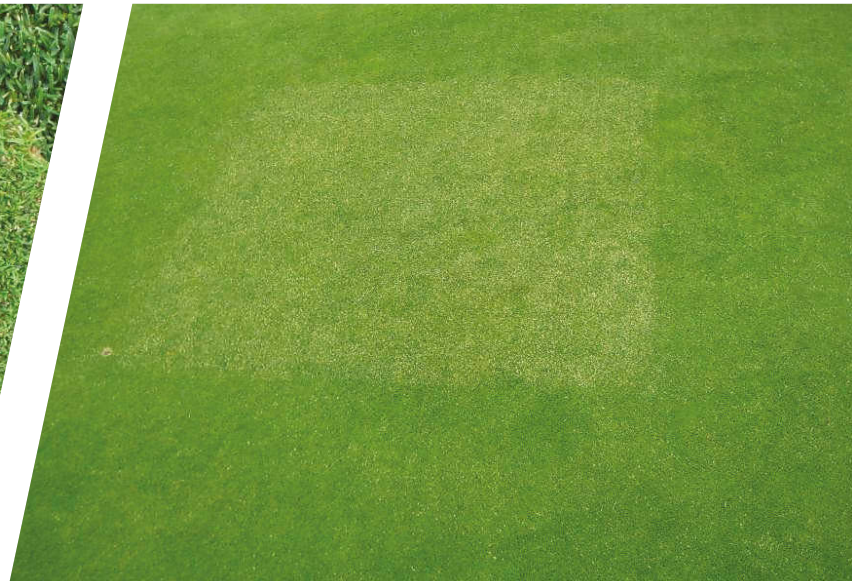
Commercial turfgrasses including
bentgrass, Kentucky bluegrass,
perennial ryegrass, tall and fine fescue

5.0 fl oz

1.0 - 2.0 gal



Close-up of plugs from an untreated and treated area respectively. Seedhead suppression results in healthier plants and improved turf quality. (Bayer)



Proliferation of annual bluegrass seedhead in an untreated area on a golf course putting green. (Bayer)

www.EnvironmentalScience.Bayer.US |  @BayerGolf



ALWAYS READ AND FOLLOW LABEL INSTRUCTIONS
 Bayer Environmental Science, a Division of Bayer CropScience LP, 5000 CentreGreen Way, Suite 400, Cary, NC 27513. For additional product information, call toll-free 1-800-331-2867. Not all products are registered in all states. Bayer, the Bayer Cross, Proxy and Stressgard are registered trademarks of Bayer. Primo Maxx is a registered trademark of Syngenta © 2019 Bayer CropScience LP. ES-1018-PRX-444-P-R1